

Collagen I Antibody / COL1A1

Catalog No: tcna5972



Available Sizes

Size: 100ug



Specifications

Application:

WB, IHC-P, IHC-F, ICC

Species Reactivity:

Human, Mouse, Rat

Host Species:

Rabbit

Immunogen / Amino acids:

An amino acid sequence from the C-terminus of mouse COL1A1 (QPPQEKSQDGGRYRA) was used as the immunogen for this Collagen type 1 antibody (100% rat homology).

Conjugation:

Antigen affinity purified

Clonality:

Polyclonal

Isotype:

Rabbit IgG

Form:

Lyophilized powder; Lyophilized from 1X PBS with 2% Trehalose

Storage Buffer:

0.5mg/ml if reconstituted with 0.2ml sterile DI water

Recommended Dilution:

Western blot : 0.5-1ug/ml Immunohistochemistry (FFPE) : 1-2ug/ml Immunohistochemistry (Frozen) : 1-2ug/ml
Immunocytochemistry (FFPE) : 1-2ug/ml Immunofluorescence (FFPE) : 2ug/ml

Purity / Grade:

Antigen affinity

Tested Application:

WB, IHC, ELISA

Storage Instruction:

After reconstitution, the Collagen type 1 antibody can be stored for up to one month at 4°C. For long-term, aliquot and store at -20°C. Avoid repeated freezing and thawing.

SwissProt:

P02452

Cellular Location:

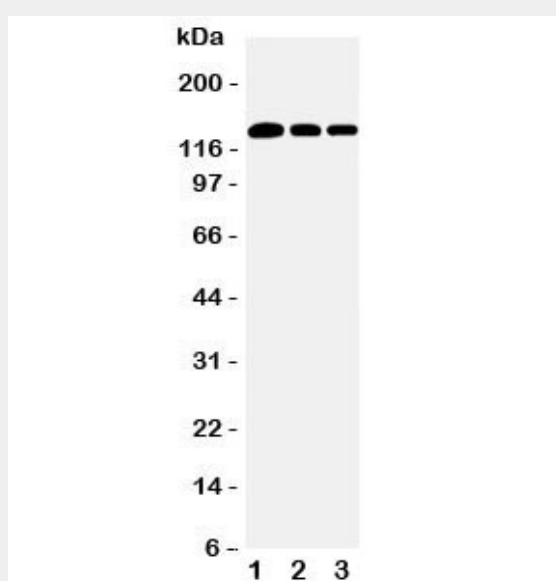
Cytoplasmic

References

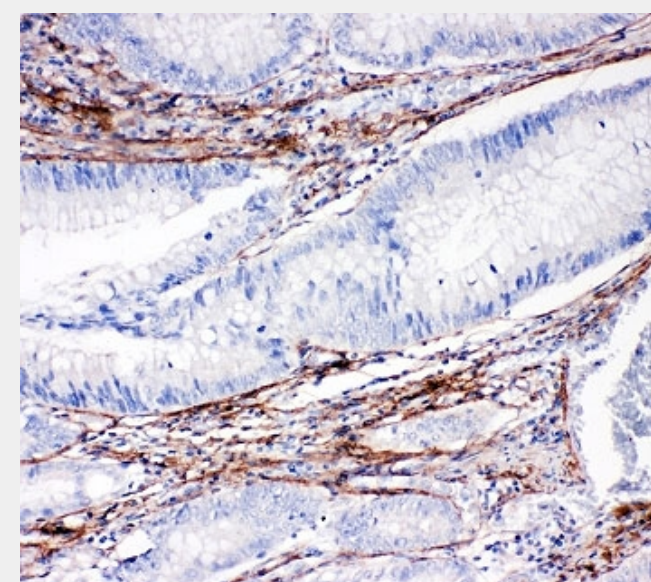
Antigen affinity purified

Product Description

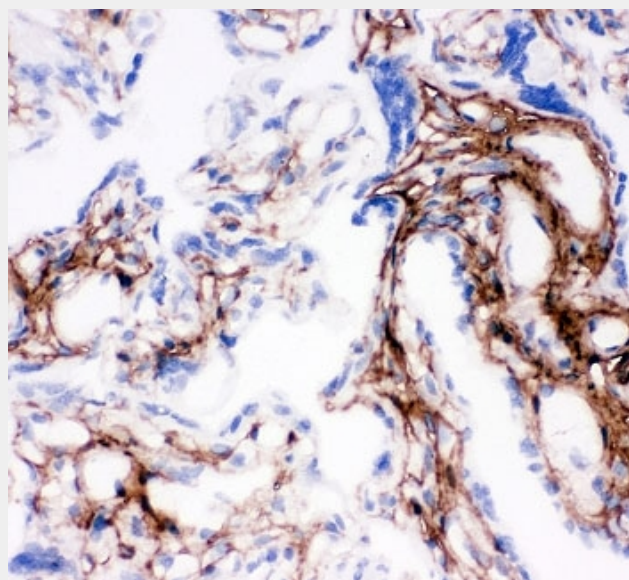
Collagen type 1 alpha 1, also known as COL1A1, is a human gene that encodes the major component of type 1 collagen, the fibrillar collagen found in most connective tissues, including cartilage. This gene is mapped to 17q21.33. This gene encodes the pro-alpha1 chains of type 1 collagen whose triple helix comprises two alpha1 chains and one alpha2 chain. Collagen type 1 is fibril-forming and found in most connective tissues and is abundant in bone, cornea, dermis and tendon. Mutations in this gene are associated with osteogenesis imperfecta types I-IV, Ehlers-Danlos syndrome type VIIA, Ehlers-Danlos syndrome Classical type, Caffey Disease and idiopathic osteoporosis.



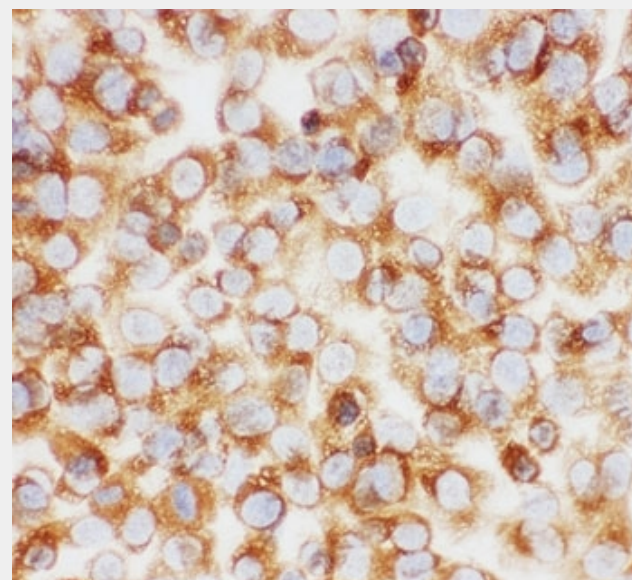
Western blot testing of Collagen type 1 antibody and Lane 1: rat lung; 2: human placenta; 3: rat testis tissue lysate. Expected molecular weight: 140-210 kDa (precursor), 70-90 kDa (mature).



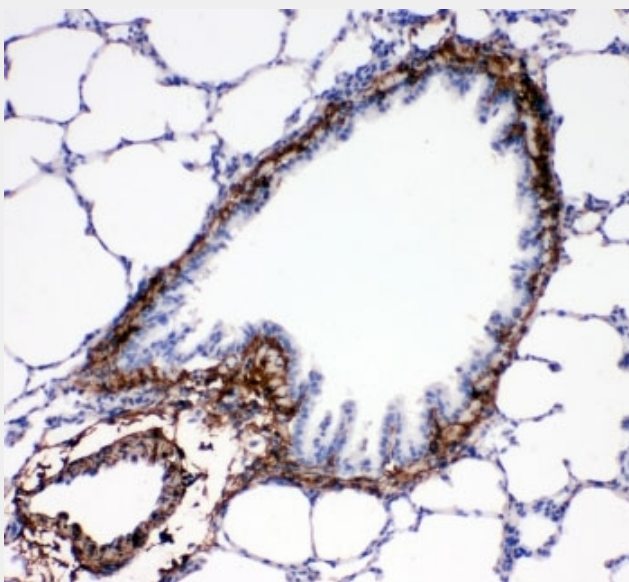
IHC-P: Collagen type 1 antibody testing of human intestine cancer tissue



IHC-F testing of Collagen type 1 antibody and human placenta tissue



ICC testing of Collagen type 1 antibody and NIH3T3 cells



IHC-P: Collagen type 1 antibody testing of rat lung tissue

All products are for RESEARCH USE ONLY. Not for diagnostic & therapeutic purposes!