

Beta-Actin Antibody

Catalog No: tcna4996



Available Sizes

Size: 100ug



Specifications

Application:

WB, IHC-P

Species Reactivity:

Human, mouse, rat

Host Species:

Mouse

Immunogen / Amino acids:

Amino acids DDDIAALVIDNGSGK were used as the immunogen for this beta-Actin antibody.

Conjugation:

Ascites

Clonality:

Monoclonal

Clones:

AC-15

Isotype:

Mouse IgG1

Form:

Liquid

Storage Buffer:

0.5mg/ml with 1% BSA and 0.01% sodium azide if reconstituted with 0.2ml sterile 1XPBS

Recommended Dilution:

Western blot: 0.25-0.5ug/ml

IHC (Paraffin): 0.5-1ug/ml The stated application concentrations are suggested starting points. Titration of the beta-Actin antibody may be required due to differences in protocols and secondary/substrate sensitivity.

Storage Instruction:

After reconstitution, the beta-Actin antibody can be stored for up to one month at 4oC. For long-term, aliquot and store at -20oC. Avoid repeated freezing and thawing.

Gene ID:

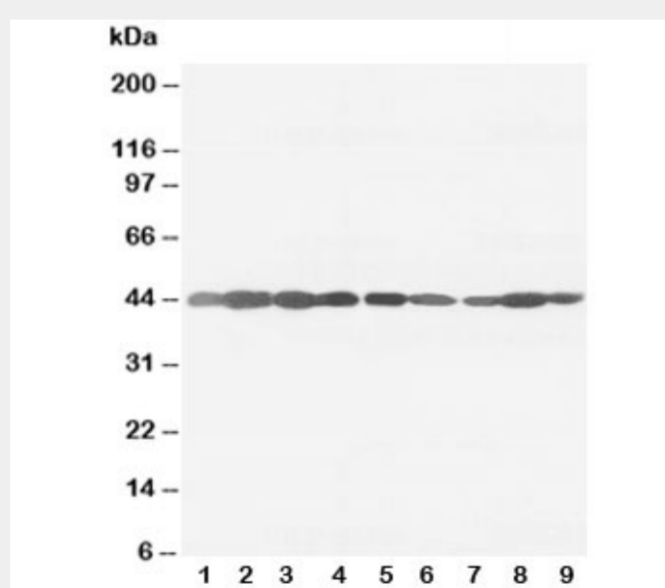
60 (human);

References

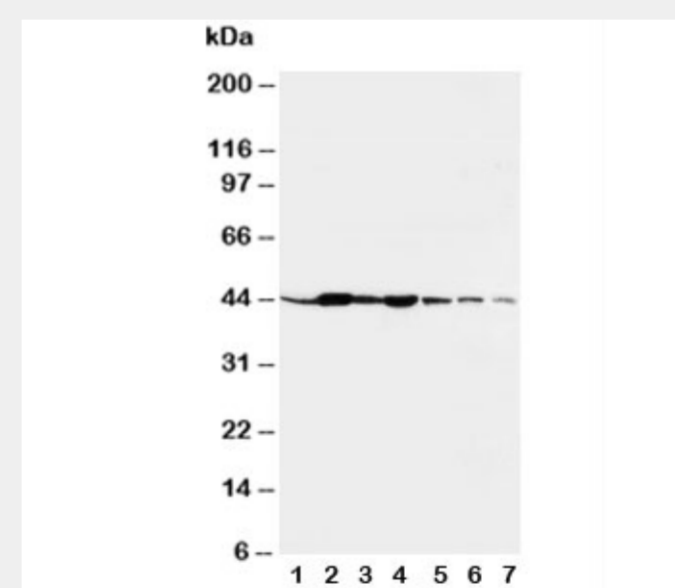
Ascites

Product Description

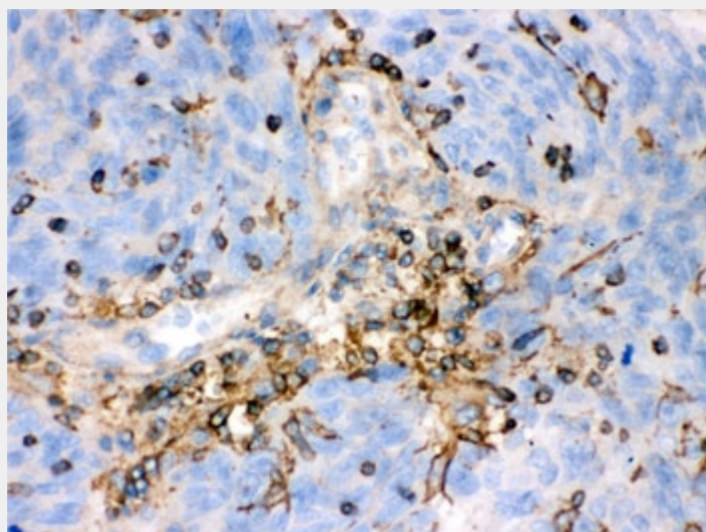
The primary site of action of cytochalasin B on cell motility processes is beta-actin. Habets et al.(1992) generated hybrids that harbor only specific regions of human chromosome 7 and assigned the ACTB locus to 7p15-p12. ACTB and the other assigned beta-actin-related sequences are dispersed over at least four different chromosomes including one locus assigned to the X chromosome. A mutation of the protein that alters depolymerization dynamics is associated with autosomal dominant developmental malformations, deafness, and dystonia.



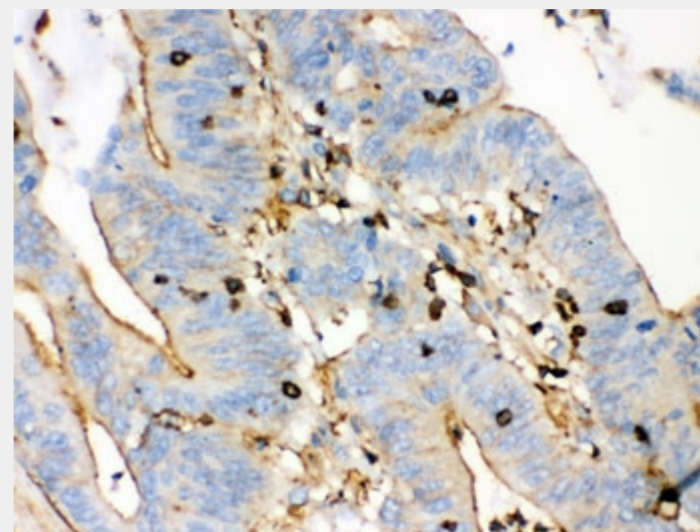
Western blot testing of beta-Actin antibody and rat tissue: ovary (1), testis (2), heart (3), brain (4); and human cell lines, lanes 5: A453; 6: HeLa; 7: SMMC-7721; 8: HT1080; 9: SW620 cell lysate



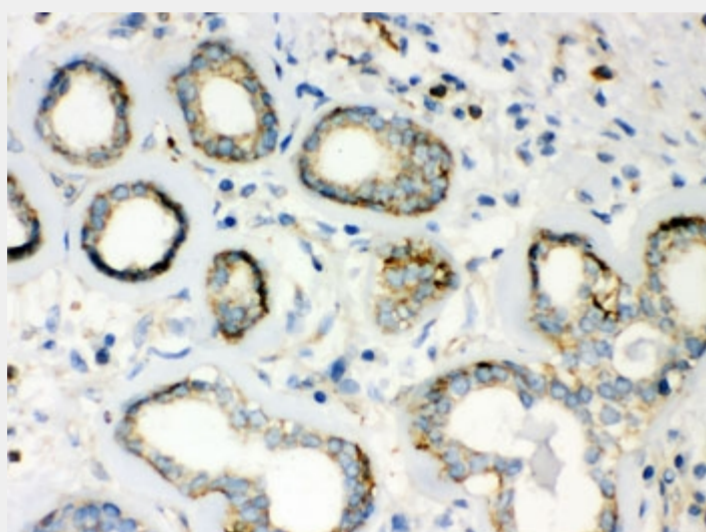
Western blot testing of beta-Actin antibody and rat tissues: liver (1), spleen (2), brain (3), kidney (4) and human cell lines, lane 5: HeLa; 6: SMMC-7721; 7: SGC cell lysate



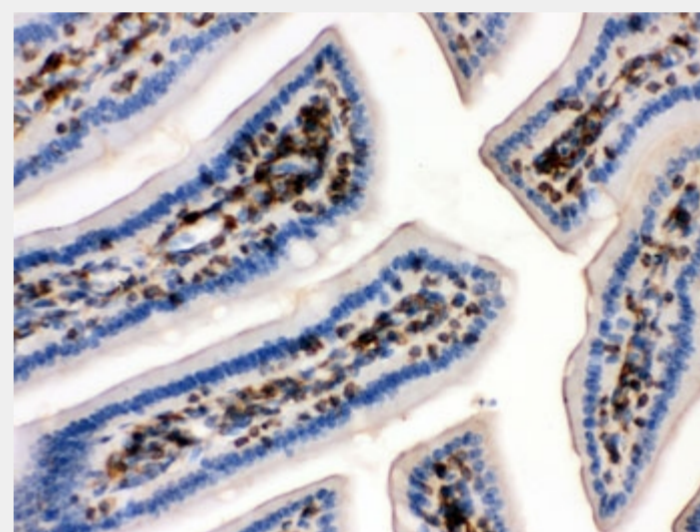
IHC testing of FFPE human lung cancer tissue with beta-Actin antibody. HIER: Boil the paraffin sections in pH 6, 10mM citrate buffer for 20 minutes and allow to cool prior to testing.



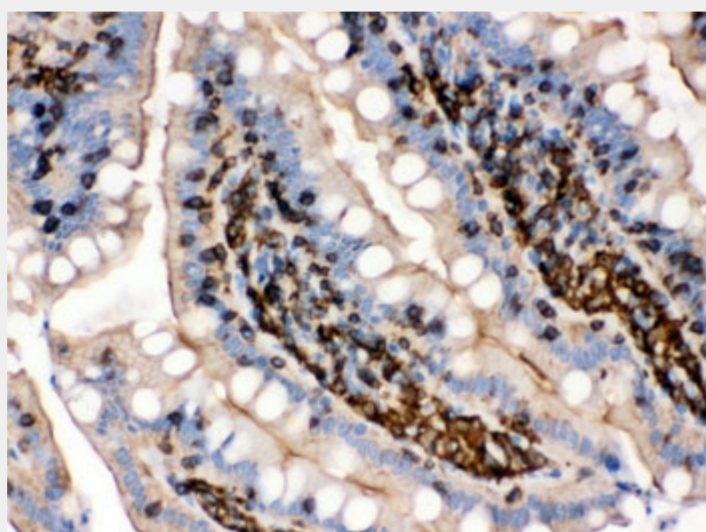
IHC testing of FFPE human intestinal cancer tissue with beta-Actin antibody. HIER: Boil the paraffin sections in pH 6, 10mM citrate buffer for 20 minutes and allow to cool prior to testing.



IHC testing of FFPE human breast cancer tissue with beta-Actin antibody. HIER: Boil the paraffin sections in pH 6, 10mM citrate buffer for 20 minutes and allow to cool prior to testing.



IHC testing of FFPE mouse intestine with beta-Actin antibody. HIER: Boil the paraffin sections in pH 6, 10mM citrate buffer for 20 minutes and allow to cool prior to testing.



IHC testing of FFPE rat intestine with beta-Actin antibody. HIER: Boil the paraffin sections in pH 6, 10mM citrate buffer for 20 minutes and allow to cool prior to testing.

All products are for RESEARCH USE ONLY. Not for diagnostic & therapeutic purposes!