

Recombinant Acetyl Lysine Antibody

Catalog No: tcna4773



Available Sizes

Size: 100ug



Specifications

Application:

WB, IP, ICC, IHC, FACS, ELISA

Species Reactivity:

All Species

Host Species:

Rabbit

Immunogen / Amino acids:

Acetyllysine-BSA was used as the immunogen for this recombinant Acetyl Lysine antibody.

Conjugation:

Purified

Clonality:

Recombinant Rabbit Monoclonal

Clones:

RM101

Isotype:

Rabbit IgG

Form:

Liquid

Storage Buffer:

1 mg/ml in PBS with 50% glycerol, 1% BSA and 0.09% sodium azide

Recommended Dilution:

Western Blot: 1:500 -1:2000 dilution

Immunoprecipitation: 1:100-1:500 dilution

Chromatin IP (ChIP): 1:100-1:500 dilution

Immunocytochemistry: 1:100-1:500 dilution

Immunohistochemistry: 1:100-1:500 dilution (1)The stated application concentrations are suggested starting points.

Titration of the recombinant Acetyl Lysine antibody may be required due to differences in protocols and secondary/substrate sensitivity.

1. A pH6 Citrate buffer or pH9 Tris/EDTA buffer HIER step is recommended for testing of FFPE tissue sections.

Storage Instruction:

Store the recombinant Acetyl Lysine antibody at -20oC (with glycerol) or aliquot and store at -20oC (without glycerol).

Gene ID:

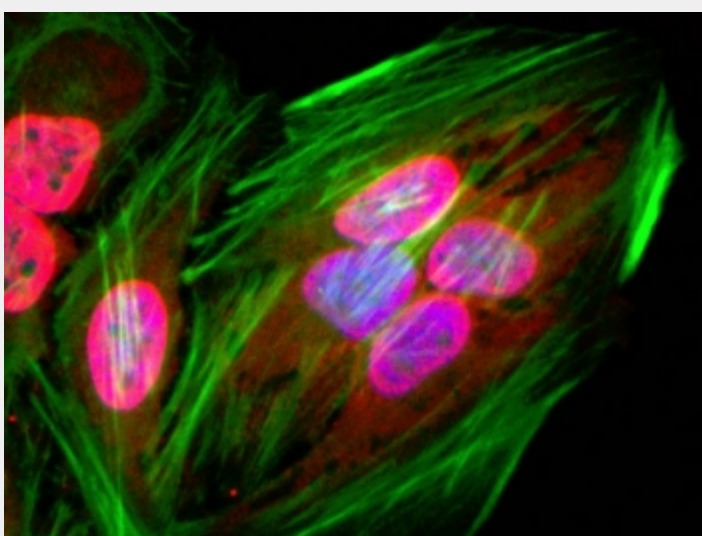
N/A (human);

References

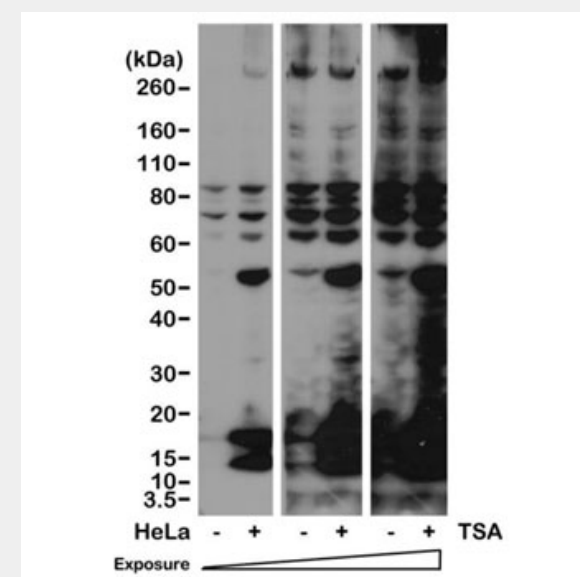
Purified

Product Description

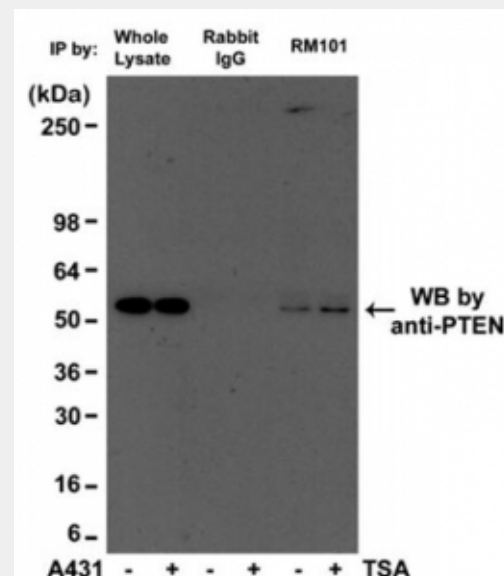
This recombinant Acetyl Lysine antibody reacts to lysine-acetylated proteins. No cross reactivity with non-acetylated lysine, and lysine with other modification.



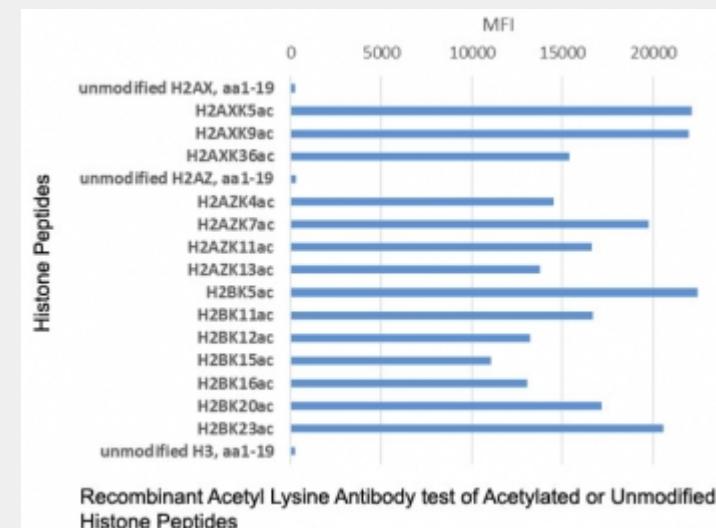
ICC staining of human HeLa cells using recombinant Acetyl Lysine antibody (red). Actin filaments was labeled with fluorescein phalloidin (green), and nuclei stained with DAPI (blue).



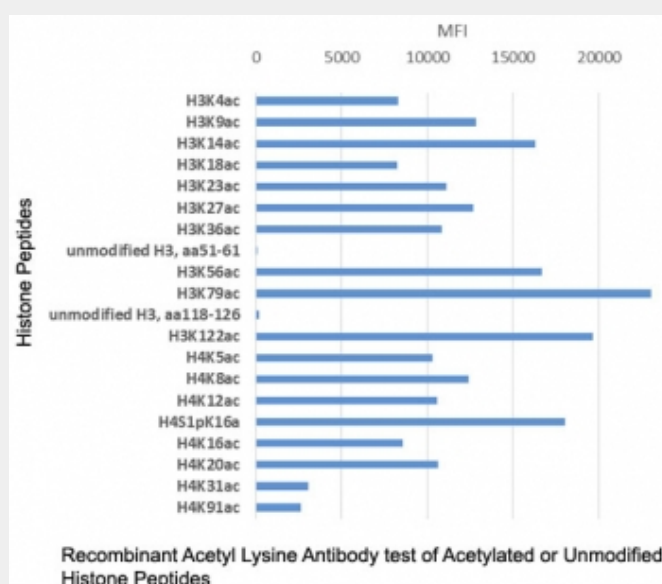
Western blot of human HeLa cells non-treated or treated with Trichostatin A (TSA) with recombinant Acetyl Lysine antibody at 1:2000.



IP of human A431 cell lysate with recombinant Acetyl Lysine antibody at 1:500 and probed with anti-PTEN mouse mAb.



The recombinant Acetyl Lysine antibody recognizes acetylated lysine in peptides with different sequences. It does not react with non-acetylated lysine.



The recombinant Acetyl Lysine antibody recognizes acetylated lysine in peptides with different sequences. It does not react with non-acetylated lysine.

All products are for RESEARCH USE ONLY. Not for diagnostic & therapeutic purposes!