

MMP1 Antibody

Catalog No: tcna2319



Available Sizes

Size: 0.08ml

Size: 0.4ml



Specifications

Application:

IHC, IF, WB, ELISA

Species Reactivity:

Human

Host Species:

Rabbit

Immunogen / Amino acids:

A portion of amino acids 317-347 from the human protein was used as the immunogen for this MMP1 antibody.

Conjugation:

Antigen affinity purified

Clonality:

Polyclonal

Isotype:

Rabbit Ig

Form:

Liquid

Storage Buffer:

In 1X PBS, pH 7.4, with 0.09% sodium azide

Recommended Dilution:

Western blot: 1:1000

IHC (Paraffin): 1:50-1:100

Immunofluorescence: 1:10-1:50 Titration of the MMP1 antibody may be required due to differences in protocols and secondary/substrate sensitivity.

Storage Instruction:

Aliquot the MMP1 antibody and store frozen at -20°C or colder. Avoid repeated freeze-thaw cycles.

SwissProt:

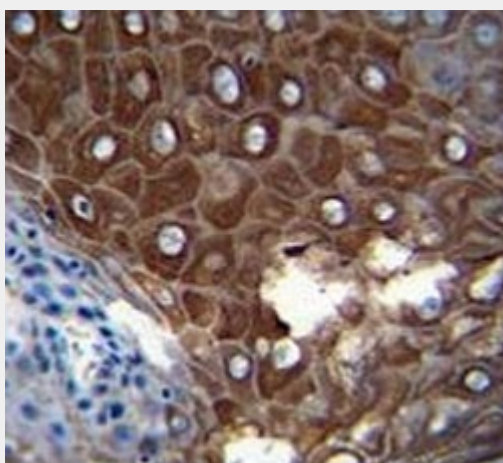
P03956

References

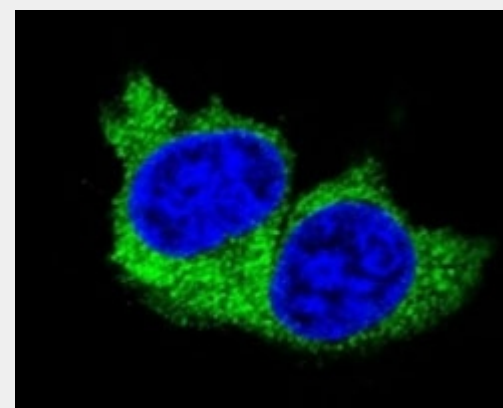
Antigen affinity purified

Product Description

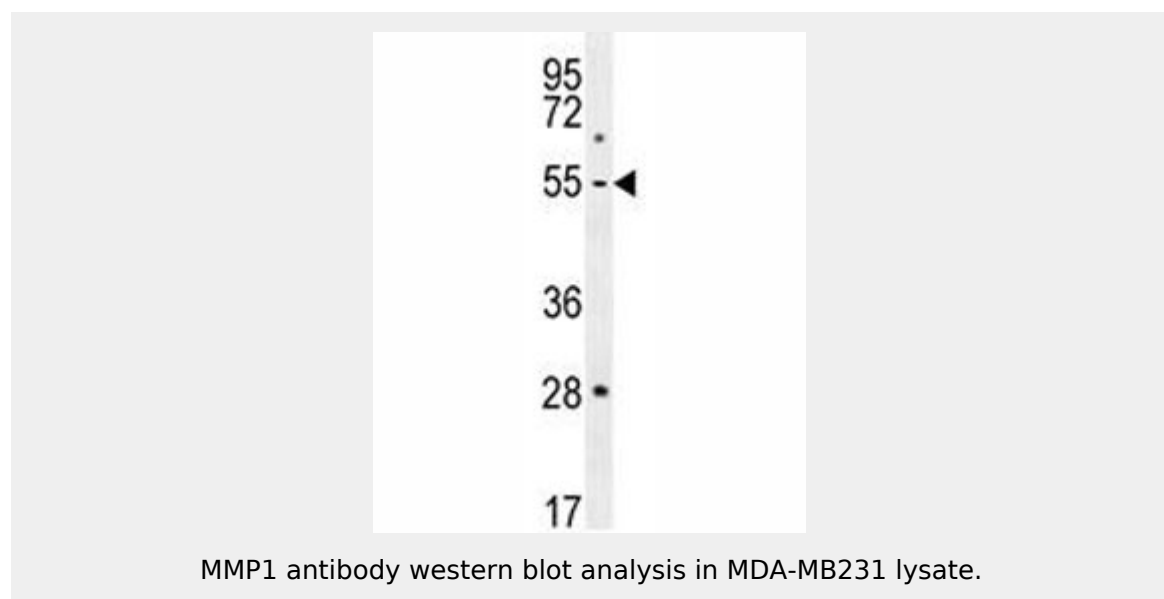
Proteins of the matrix metalloproteinase (MMP) family are involved in the breakdown of extracellular matrix in normal physiological processes, such as embryonic development, reproduction, and tissue remodeling, as well as in disease processes, such as arthritis and metastasis. Most MMP's are secreted as inactive proproteins which are activated when cleaved by extracellular proteinases. This gene encodes a secreted enzyme which breaks down the interstitial collagens, types I, II, and III. The gene is part of a cluster of MMP genes which localize to chromosome 11q22.3. Alternative splicing results in multiple transcript variants.



MMP1 antibody immunohistochemistry analysis in formalin fixed and paraffin embedded human esophageal carcinoma



Confocal immunofluorescent analysis of MMP1 antibody with MDA-MB231 cells followed by Alexa Fluor 488-conjugated goat anti-rabbit IgG (green). DAPI was used as a nuclear counterstain (blue).



All products are for RESEARCH USE ONLY. Not for diagnostic & therapeutic purposes!