

# Recombinant NKX2.2 Antibody

Catalog No: tcna1743



## Available Sizes

**Size:** 20ug

**Size:** 100ug



## Specifications

**Application:**

FACS, IHC-P, IF

**Species Reactivity:**

Human. Other species not tested.

**Host Species:**

Rabbit

**Immunogen / Amino acids:**

A human partial recombinant protein was used as the immunogen for this recombinant NKX2.2 antibody.

**Conjugation:**

Unconjugated

**Clonality:**

Recombinant Rabbit Monoclonal

**Clones:**

NX2/1422R

**Isotype:**

Rabbit IgG, k

**Form:**

Liquid

**Storage Buffer:**

0.2 mg/ml in 1X PBS with 0.1 mg/ml BSA (US sourced) and 0.05% sodium azide

---

**Concentration:**

0.2 mg/ml

---

**Recommended Dilution:**

FACS: 0.5-1ug/10e6 cells in 0.1ml

IF: 1-2ug/ml

IHC (FFPE): 1-2ug/ml for 30 minutes at RT

Prediluted IHC only format: incubate for 30 min at RT (1) Titration of the recombinant NKX2.2 antibody may be required for optimal performance.

1. The prediluted format is supplied in a dropper bottle and is optimized for use in IHC. After epitope retrieval step (if required)

drip mAb solution onto the tissue section and incubate at RT for 30 min.

---

**Storage Instruction:**

Store the recombinant NKX2.2 antibody at 2-8°C (with azide) or aliquot and store at -20°C or colder (without azide).

---

**SwissProt:**

O95096

---

**Gene ID:**

4821 (human);

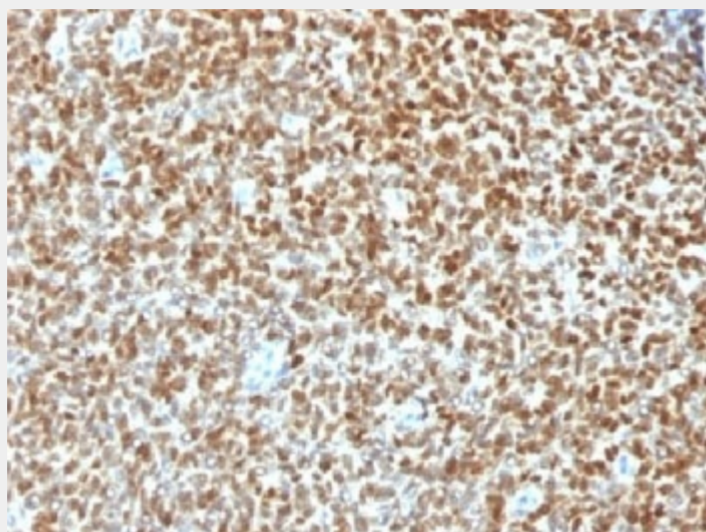
---

**References**

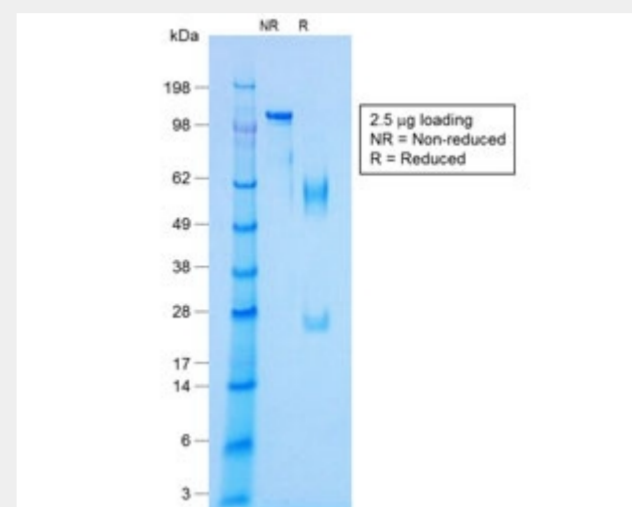
Protein A affinity chromatography

**Product Description**

Expression of NKX2.2 has been found in neuroendocrine tumors of the gut, making it a potential marker for the study of gastrointestinal neuroendocrine tumors. More recently, NKX2.2 protein was identified as a target of EWS-FLI-1, the fusion protein specific to Ewing sarcoma, and was shown to be differentially upregulated in Ewing sarcoma on the basis of array-based gene expression analysis. Antibody to NKX2.2 detects a valuable marker for Ewing sarcoma, with a sensitivity of 93% and a specificity of 89%, and aids in the differential diagnosis of small round cell tumors.



IHC testing of FFPE Ewings sarcoma with recombinant NKX2.2 antibody (clone NX2/1422R). HIER: steam sections in 10mM citrate buffer, pH 6.0, for 10-20 min.



SDS-PAGE analysis of purified, BSA-free recombinant NKX2.2 antibody (clone NX2/1422R) as confirmation of integrity and purity.

All products are for RESEARCH USE ONLY. Not for diagnostic & therapeutic purposes!