

# MRP1 Antibody / ABCC1

Catalog No: tcna1137



## Available Sizes

**Size:** 20ug

**Size:** 100ug



## Specifications

**Application:**

WB, FACS, IHC-P, IF

**Species Reactivity:**

Human. Others not tested.

**Host Species:**

Mouse

**Immunogen / Amino acids:**

Human recombinant protein was used as the immunogen for this MRP1 antibody.

**Conjugation:**

Unconjugated

**Clonality:**

Monoclonal

**Clones:**

MRP1/1343

**Isotype:**

Mouse IgG1

**Form:**

Liquid

**Storage Buffer:**

0.2 mg/ml in 1X PBS with 0.1 mg/ml BSA (US sourced) and 0.05% sodium azide

---

**Recommended Dilution:**

Western blot: 0.5-1ug/ml

FACS: 0.5-1ug/10<sup>6</sup> cells

IF: 1-2ug/ml

IHC (FFPE): 1-2ug/ml for 30 min at RTThe concentration stated for each application is a general starting point.

Variations in protocols

secondaries and substrates may require the MRP1 antibody to be titered up or down for optimal performance.

---

**Storage Instruction:**

Store the MRP1 antibody at 2-8oC (with azide) or aliquot and store at -20oC or colder (without azide).

---

**SwissProt:**

P33527

---

**Gene ID:**

4363 (human);

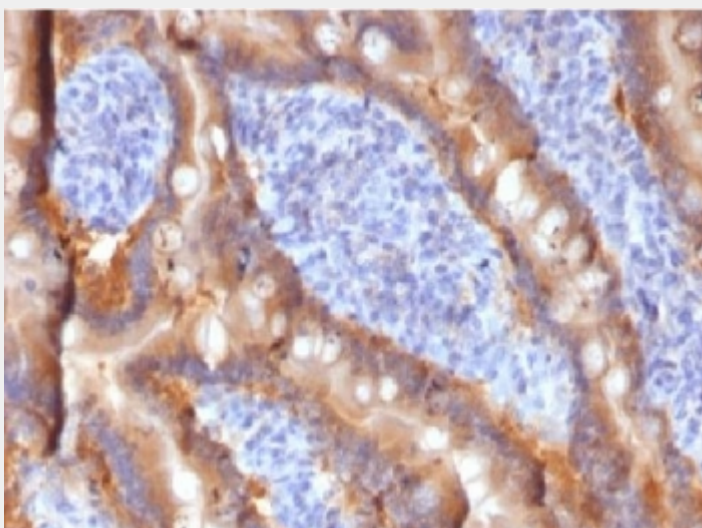
---

**References**

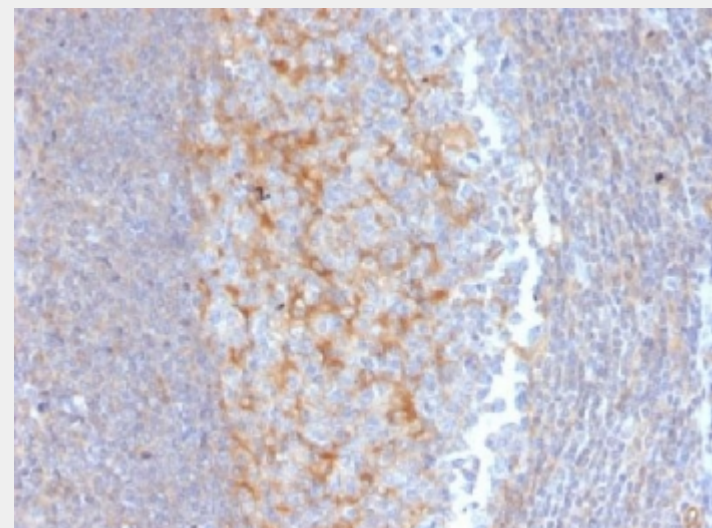
Protein G affinity chromatography

**Product Description**

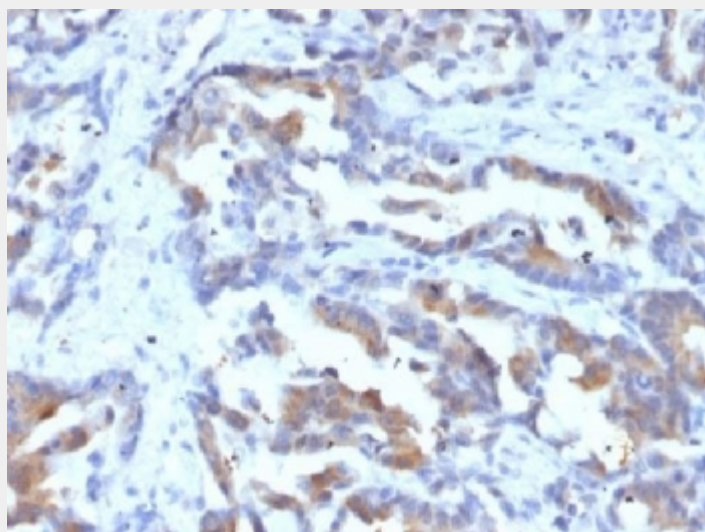
The two members of the large family of ABC transporters known to confer multidrug resistance in human cancer cells are the MDR1 P-glycoprotein and the multidrug-resistance protein MRP1. MRP1 is an integral membrane protein that contains an MDR-like core, an N-terminal membrane-bound region and a cytoplasmic linker, and it is expressed in various cerebral cells, as well as in lung, testis and peripheral blood.



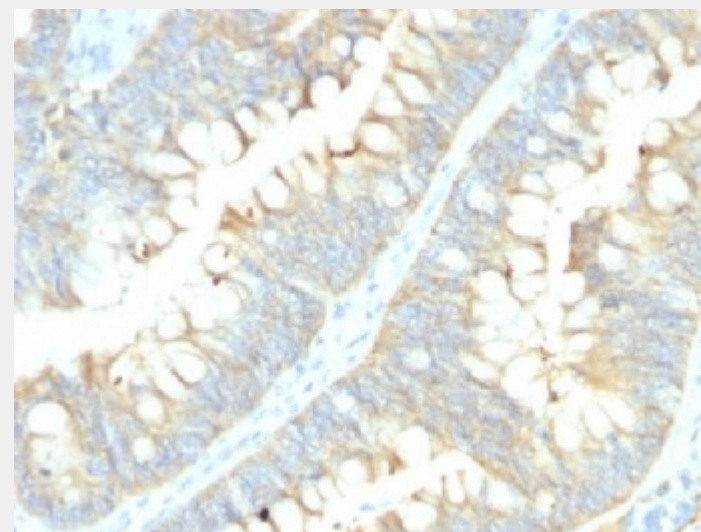
IHC testing of FFPE human duodenum with MRP1 antibody (clone MRP1/1343). HIER: boil tissue sections in 10mM Tris with 1mM EDTA, pH 9, for 10-20 min.



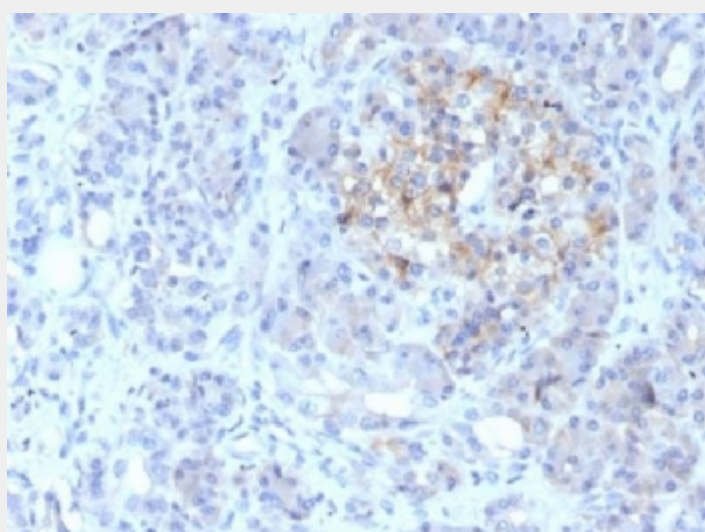
IHC testing of FFPE human tonsil with MRP1 antibody (clone MRP1/1343). HIER: boil tissue sections in 10mM Tris with 1mM EDTA, pH 9, for 10-20 min.



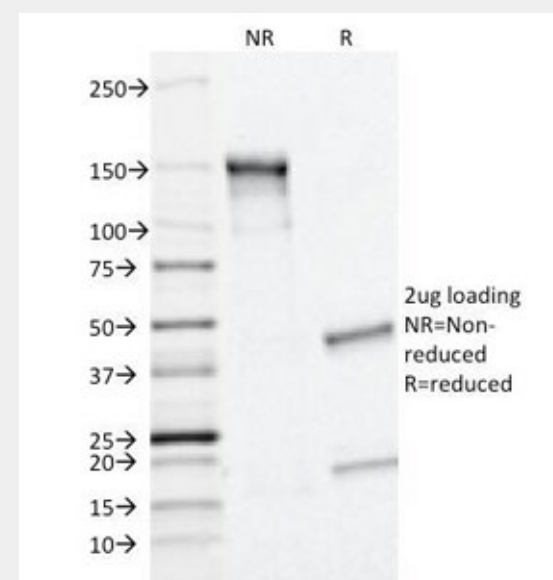
IHC testing of FFPE human rectal carcinoma with MRP1 antibody (clone MRP1/1343).  
HIER: boil tissue sections in 10mM Tris with 1mM EDTA, pH 9, for 10-20 min.



IHC testing of FFPE human colon carcinoma with MRP1 antibody (clone MRP1/1343).  
HIER: boil tissue sections in 10mM Tris with 1mM EDTA, pH 9, for 10-20 min.



IHC testing of FFPE human pancreas with MRP1 antibody (clone MRP1/1343). HIER:  
boil tissue sections in 10mM Tris with 1mM EDTA, pH 9, for 10-20 min.



SDS-PAGE Analysis of Purified, BSA-Free MRP1 Antibody (clone MRP1/1343).  
Confirmation of Integrity and Purity of the Antibody.

All products are for RESEARCH USE ONLY. Not for diagnostic & therapeutic purposes!