

# Nucleolin Antibody Cocktail- sodium azide free

Catalog No: tcna668saf



## Available Sizes

---

**Size:** 100ug



## Specifications

---

**Application:**

FACS, IF, WB, IHC-P

**Species Reactivity:**

Human. Does not react with Mouse, Rat and Cow. Other species not tested.

**Host Species:**

Mouse

**Immunogen / Amino acids:**

SUDHL1 cell nuclear lysate (364-5) and recombinant human protein (NCL/902) were used as the immunogen for the Nucleolin antibody cocktail.

**Conjugation:**

Unconjugated

**Clonality:**

Monoclonal

**Clones:**

364-5 + NCL/902

**Isotype:**

Mouse IgGs

**Form:**

Liquid

**Storage Buffer:**

1 mg/ml in 1X PBS; BSA free, sodium azide free

**Recommended Dilution:**

Flow Cytometry: 0.5-1ug/million cells in 0.1ml

Immunofluorescence: 0.5-1ug/ml

Western blot: 0.5-1ug/ml

Immunohistochemistry (FFPE): 0.5-1ug/ml for 30 min at RT (1)

Prediluted format: incubate for 30 min at RT (2) Optimal dilution of the Nucleolin antibody cocktail should be determined by the researcher.

1. Staining of formalin-fixed tissues is enhanced by boiling tissue sections in 10mM Citrate buffer pH 6.0

for 10-20 min followed by cooling at RT for 20 min

2. The prediluted format is supplied in a dropper bottle and is optimized for use in IHC. After epitope retrieval step (if required)

drip mAb solution onto the tissue section and incubate at RT for 30 min.

**Storage Instruction:**

Store the Nucleolin antibody cocktail at 2-8oC (with azide) or aliquot and store at -20oC or colder (without azide).

**SwissProt:**

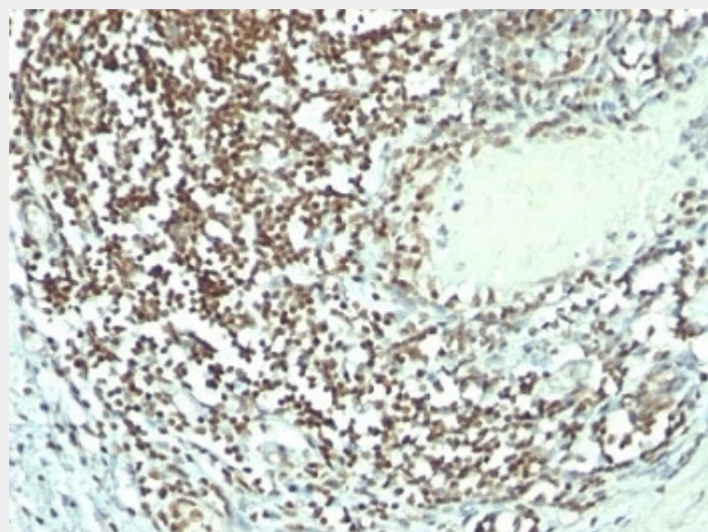
P19338

**References**

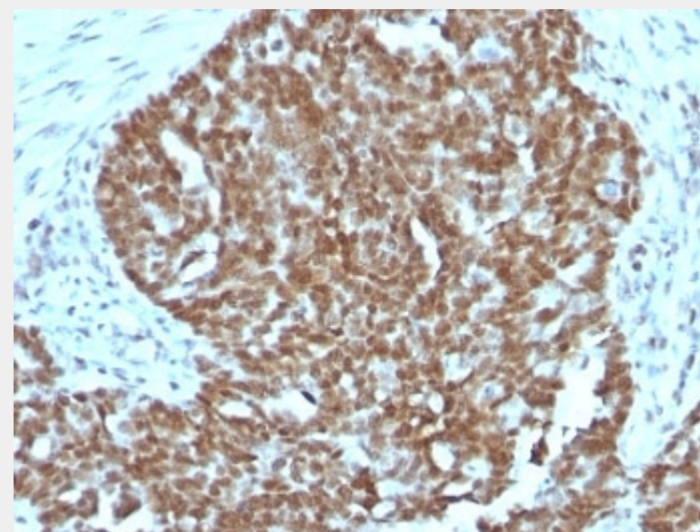
Protein G affinity chromatography

**Product Description**

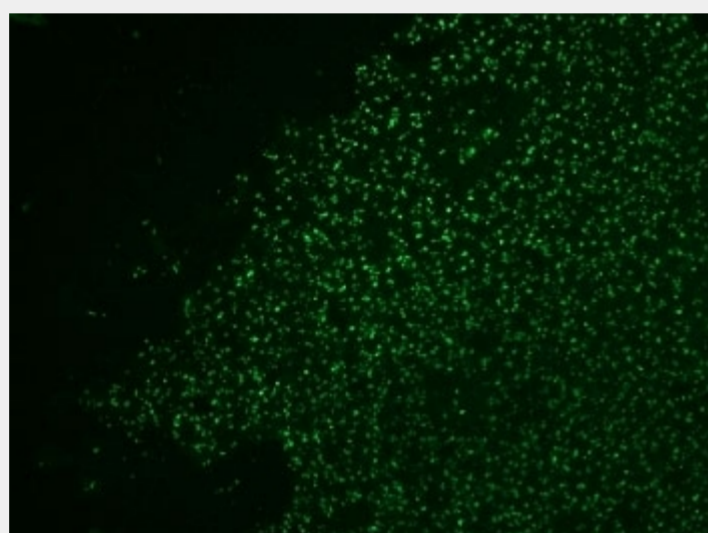
Recognizes a protein of ~76kDa, which is identified as Nucleolin (NCL). It is the major nucleolar phosphoprotein of growing eukaryotic cells. NCL is located mainly in dense fibrillar regions of the nucleolus. It is found associated with intranucleolar chromatin and pre-ribosomal particles. Human NCL gene consists of 14 exons with 13 introns and spans approximately 11kb. It induces chromatin decondensation by binding to histone H1. It is thought to play a role in pre-rRNA transcription and ribosome assembly. This mAb can be used to stain the nucleoli in cell or tissue preparations and can be used as a marker of the nucleoli in subcellular fractions. It produces a speckled pattern in the nuclei of cells of normal and malignant cells and may be used to stain the nucleoli of cells in fixed or frozen tissue sections. It can be used with paraformaldehyde fixed frozen tissue or cell preparations and formalin fixed, paraffin-embedded tissue sections.



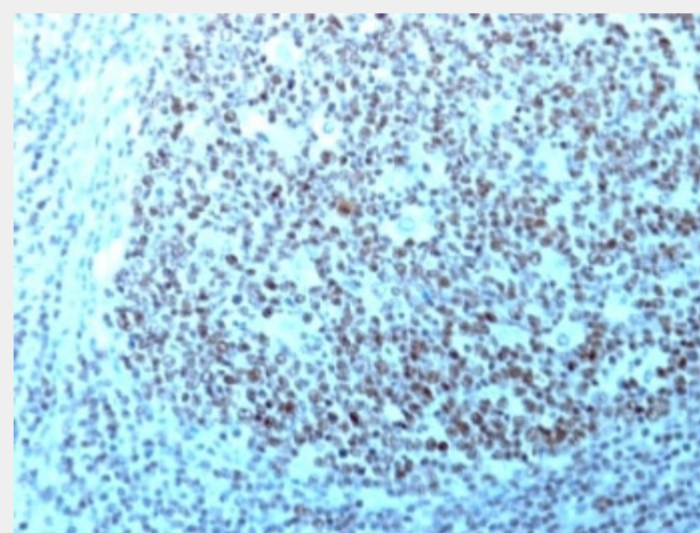
Formalin-fixed, paraffin-embedded human bladder carcinoma stained with Nucleolin antibody (364-5 + NCL/902).



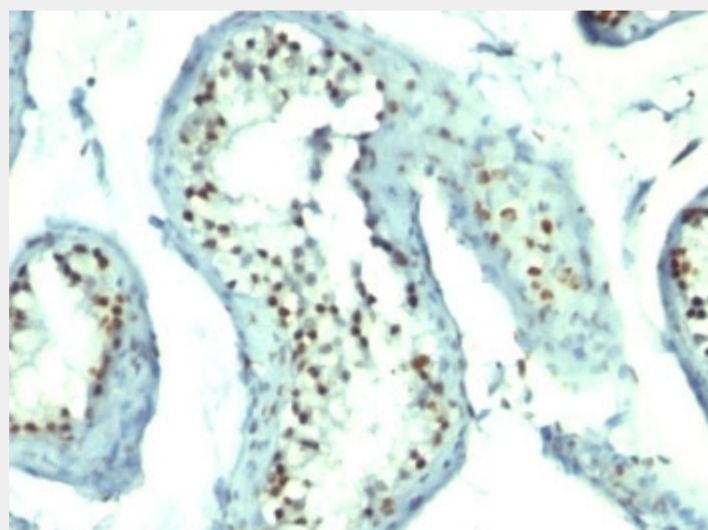
Formalin-fixed, paraffin-embedded human ovarian carcinoma stained with Nucleolin antibody.



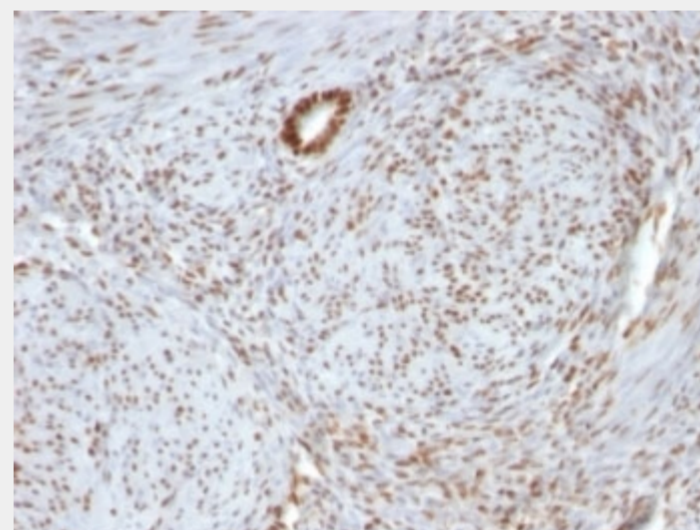
Formalin-fixed, paraffin-embedded human colon carcinoma stained with AF488 Conjugate of Nucleolin antibody.



Formalin-fixed, paraffin-embedded human tonsil stained with Nucleolin antibody.



Formalin-fixed, paraffin-embedded human testicular carcinoma stained with Nucleolin antibody.



Formalin-fixed, paraffin-embedded human uterus stained with Nucleolin antibody.

All products are for RESEARCH USE ONLY. Not for diagnostic & therapeutic purposes!