

Nucleolin Antibody

Catalog No: tcna665



Available Sizes

Size: 20ug

Size: 100ug



Specifications

Application:

FACS, IHC-P, WB, IF

Species Reactivity:

Human, Mouse, Rat, Guinea Pig, Gerbil, Cat, Pig, Rabbit, Cow and Chicken. Other species not tested.

Host Species:

Mouse

Immunogen / Amino acids:

Recombinant human protein was used as the immunogen for the Nucleolin antibody.

Conjugation:

Unconjugated

Clonality:

Monoclonal

Clones:

NCL/902

Isotype:

Mouse IgG1

Form:

Liquid

Storage Buffer:

0.2 mg/ml in 1X PBS with 0.1 mg/ml BSA (US sourced) and 0.05% sodium azide

Recommended Dilution:

Flow Cytometry: 0.5-1ug/million cells in 0.1ml

IF: 0.5-1ug/ml

Immunohistochemistry (FFPE): 0.25-0.5ug/ml for 30 min at RT (1)

Western blot: 0.5-1ug/ml

Prediluted format: incubate for 30 min at RT (2) Optimal dilution of the Nucleolin antibody should be determined by the researcher.

1. Staining of formalin-fixed tissues requires boiling tissue sections in 10mM Citrate buffer

pH 6.0

for 10-20 min followed by cooling at RT for 20 min

2. The prediluted format is supplied in a dropper bottle and is optimized for use in IHC. After epitope retrieval step (if required)

drip mAb solution onto the tissue section and incubate at RT for 30 min.

Storage Instruction:

Store the Nucleolin antibody at 2-8oC (with azide) or aliquot and store at -20oC or colder (without azide).

SwissProt:

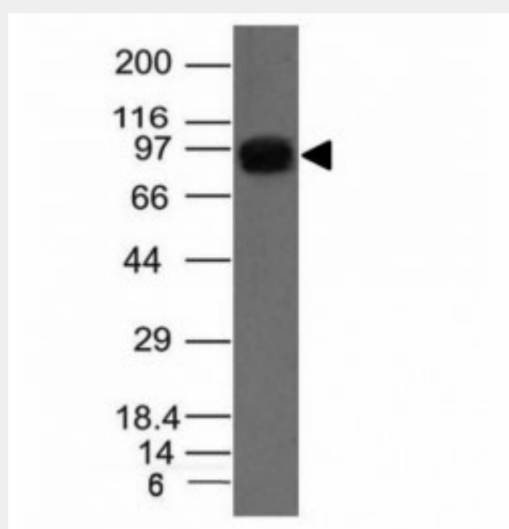
P19338

References

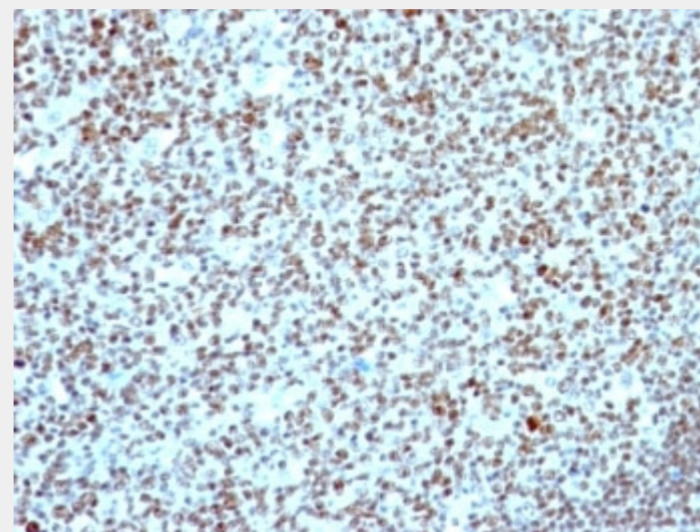
Protein G affinity chromatography

Product Description

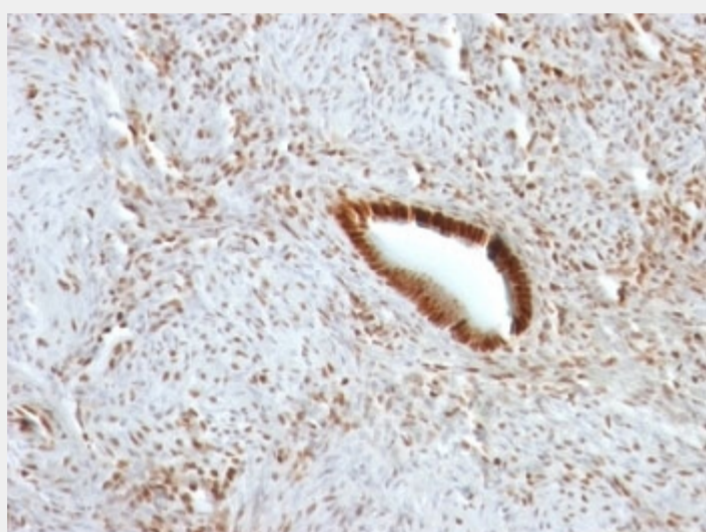
Recognizes a protein of ~76kDa, which is identified as Nucleolin (NCL). It is the major nucleolar phosphoprotein of growing eukaryotic cells. NCL is located mainly in dense fibrillar regions of the nucleolus. It is found associated with intranucleolar chromatin and pre-ribosomal particles. Human NCL gene consists of 14 exons with 13 introns and spans approximately 11kb. It induces chromatin decondensation by binding to histone H1. It is thought to play a role in pre-rRNA transcription and ribosome assembly.



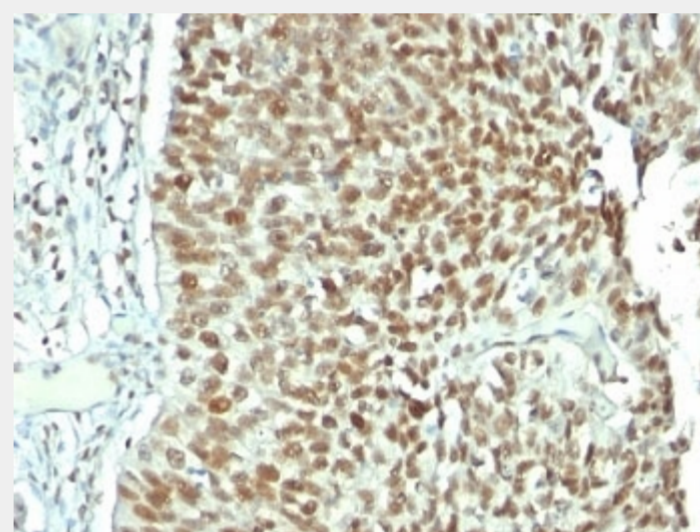
Western blot of A431 cell lysate using Nucleolin antibody.



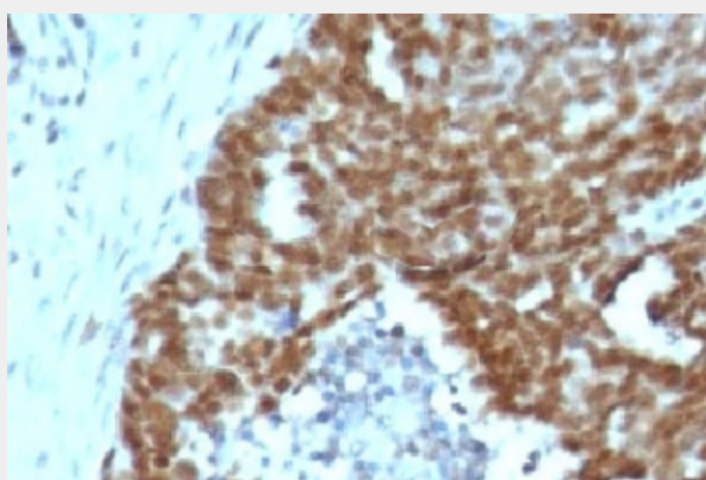
Formalin-fixed, paraffin-embedded human tonsil stained with Nucleolin antibody.



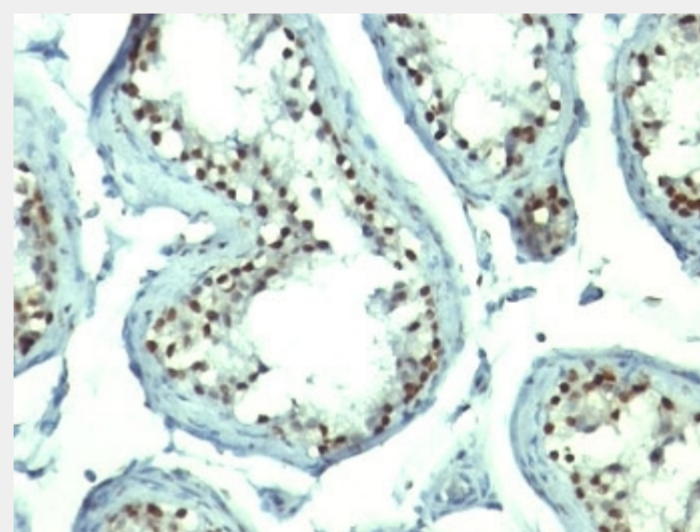
Formalin-fixed, paraffin-embedded human uterus stained with Nucleolin antibody.



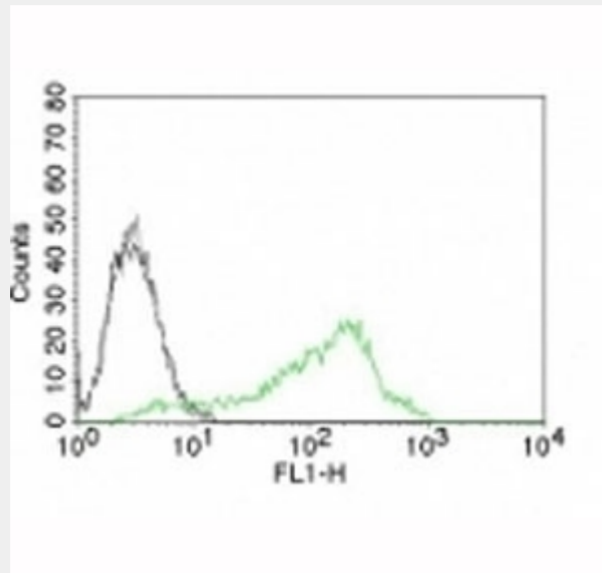
Formalin-fixed, paraffin-embedded human bladder carcinoma stained with Nucleolin antibody.



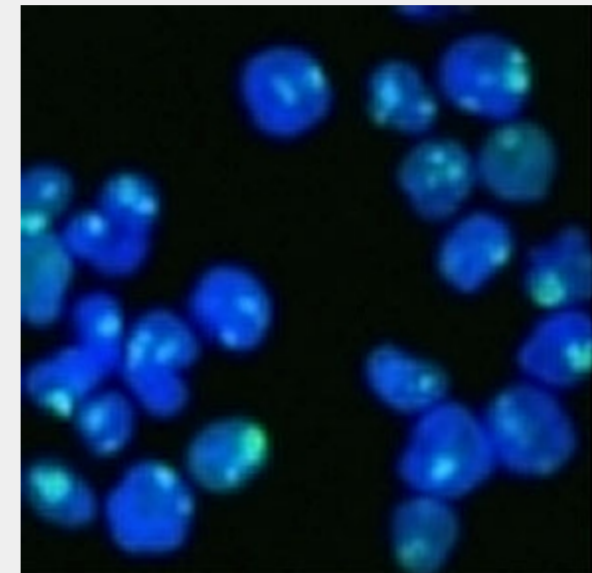
Formalin-fixed, paraffin-embedded human ovarian carcinoma stained with Nucleolin antibody.



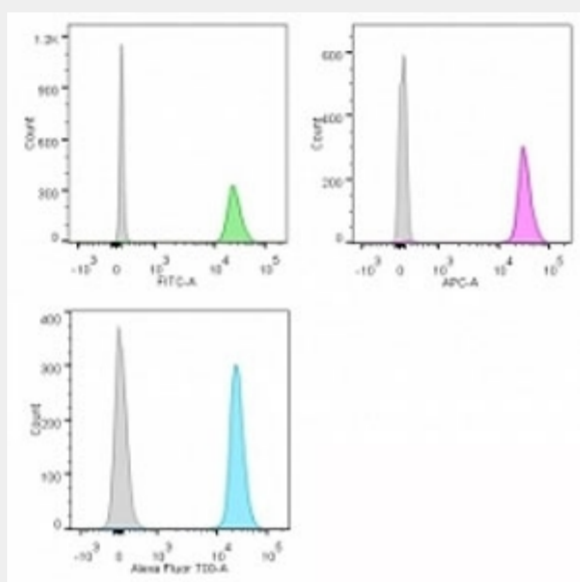
Formalin-fixed, paraffin-embedded human testicular carcinoma stained with Nucleolin antibody.



Flow cytometry testing of human 293T cells. Black: cells alone; Grey: isotype control; Green: AF488-labeled Nucleolin antibody.



HeLa cells stained with AF488 labeled Nucleolin antibody. Green: AF488-labeled Ab. Blue: DAPI.



Flow cytometry of human Jurkat cells. Grey: isotype control; Green: FITC-labeled; Purple: APC-Labeled; turquoise: AF700-Labeled Nucleolin antibody.

All products are for RESEARCH USE ONLY. Not for diagnostic & therapeutic purposes!