

# Cytokeratin 18 Antibody- sodium azide free

Catalog No: tcna587saf



## Available Sizes

---

**Size:** 100ug



## Specifications

---

**Application:**

FACS, IF, IHC-P

**Species Reactivity:**

Human. Does not react with Mouse, Rat, Sheep, Hamster, Cow, Dog and Pig. Other species not tested.

**Host Species:**

Mouse

**Immunogen / Amino acids:**

Recombinant full-length human KRT18 protein was used as the immunogen for the Cytokeratin 18 antibody.

**Conjugation:**

Unconjugated

**Clonality:**

Monoclonal

**Clones:**

KRT18/834

**Isotype:**

Mouse IgG1

**Form:**

Liquid

**Storage Buffer:**

1 mg/ml in 1X PBS; BSA free, sodium azide free

**Concentration:**

1 mg/ml

---

**Recommended Dilution:**

Flow Cytometry: 0.5-1ug/million cells in 0.1ml

Immunofluorescence: 1-2ug/ml

Immunohistochemistry (FFPE): 0.5-1ug/ml for 30 min at RT (1)

Prediluted format : incubate for 30 min at RT (2)Optimal dilution of the Cytokeratin 18 antibody should be determined by the researcher.

1. Staining of formalin-fixed tissues requires boiling tissue sections in 10mM Citrate buffer

pH 6.0

for 10-20 min followed by cooling at RT for 20 min

2. The prediluted format is supplied in a dropper bottle and is optimized for use in IHC. After epitope retrieval step (if required)

drip mAb solution onto the tissue section and incubate at RT for 30 min.

---

**Storage Instruction:**

Store the Cytokeratin 18 antibody at 2-8oC (with azide) or aliquot and store at -20oC or colder (without azide).

---

**SwissProt:**

P05783

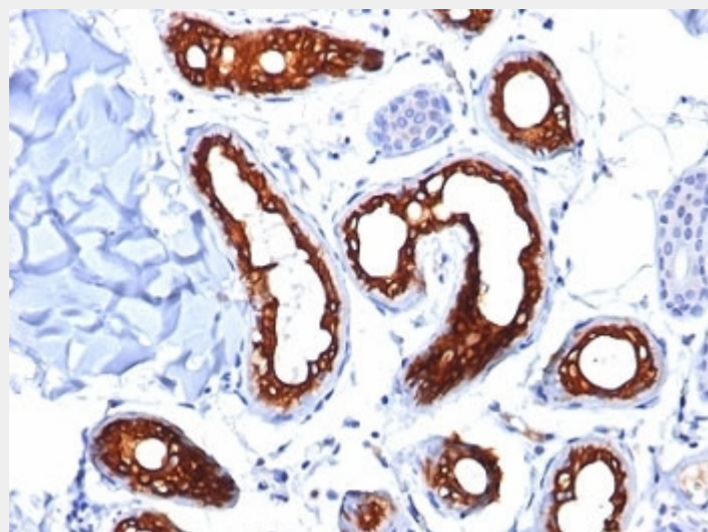
---

**References**

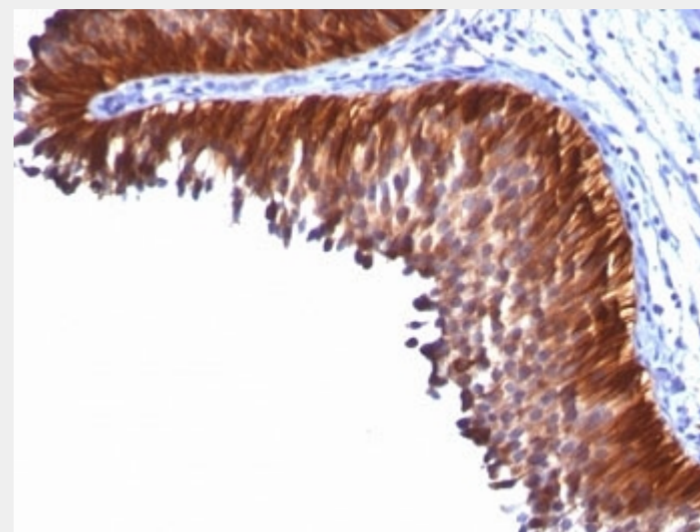
Protein G affinity chromatography

**Product Description**

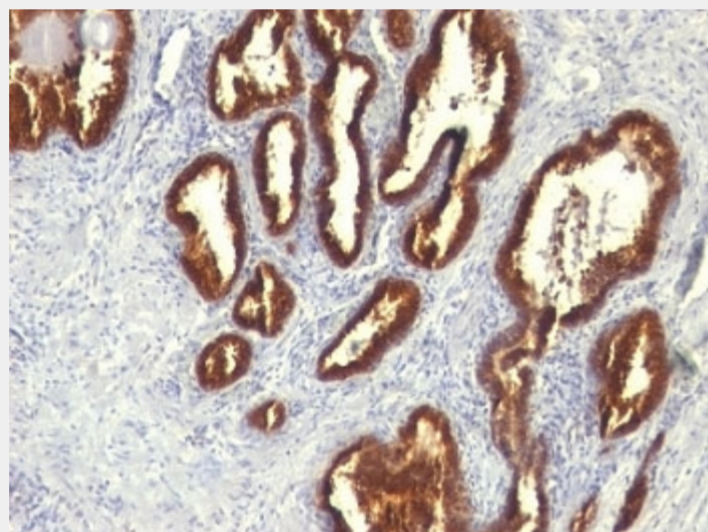
This mAb reacts with a wide variety of simple epithelia. It does not react with stratified squamous epithelia. It reacts with epithelial tumors of the gastrointestinal tract, lung, breast, pancreas, ovary, and thyroid. Cytokeratin 18, which belongs to the type A (acidic) subfamily of low molecular weight keratins, exists in combination with cytokeratin 8. It is reported that tissues from gastrointestinal tract are positive for both cytokeratin 8 and 18 but do not contain cytokeratin 14. Tissues from gastrointestinal tract, respiratory tract and urogenital tract, as well as endocrine and exocrine tissues and mesothelial cells are positive for cytokeratin 18.



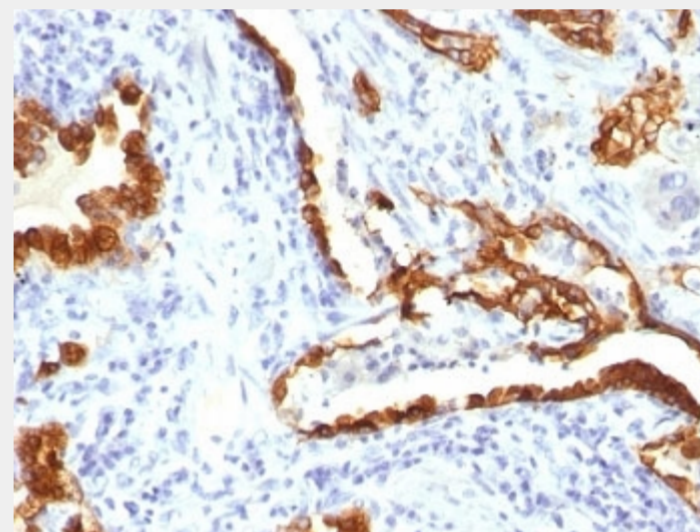
Formalin-fixed, paraffin-embedded human skin stained with Cytokeratin 18 antibody (KRT18/834).



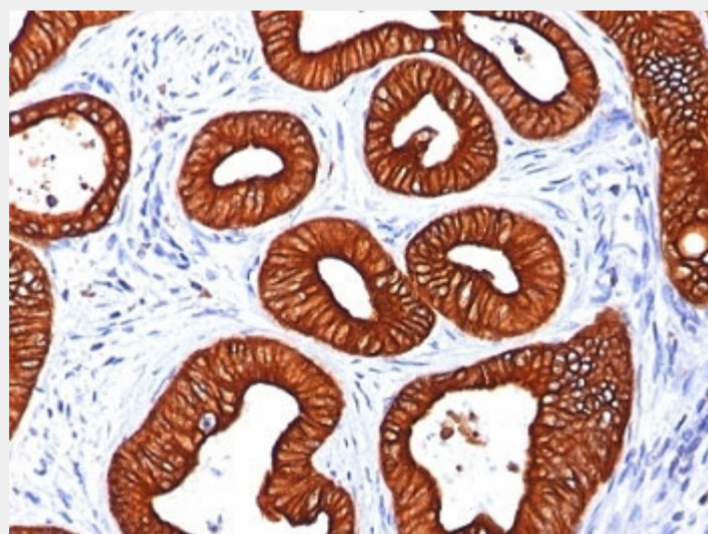
Formalin-fixed, paraffin-embedded human bladder carcinoma stained with Cytokeratin 18 antibody (KRT18/834).



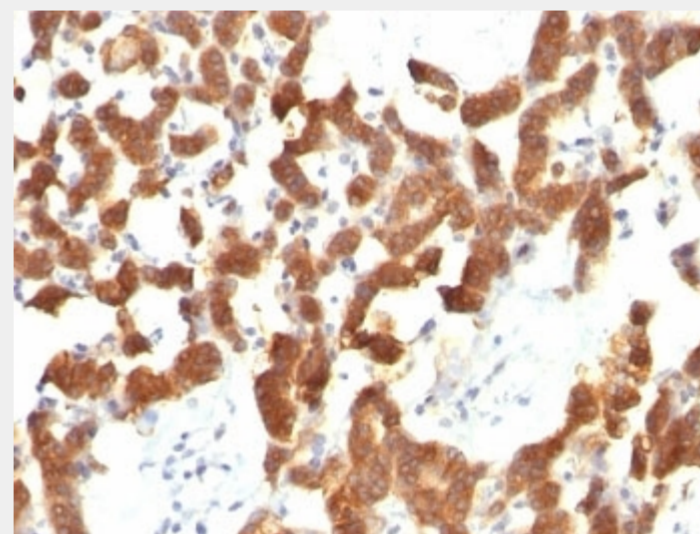
Formalin-fixed, paraffin-embedded human prostate carcinoma stained with Cytokeratin 18 antibody (KRT18/834).



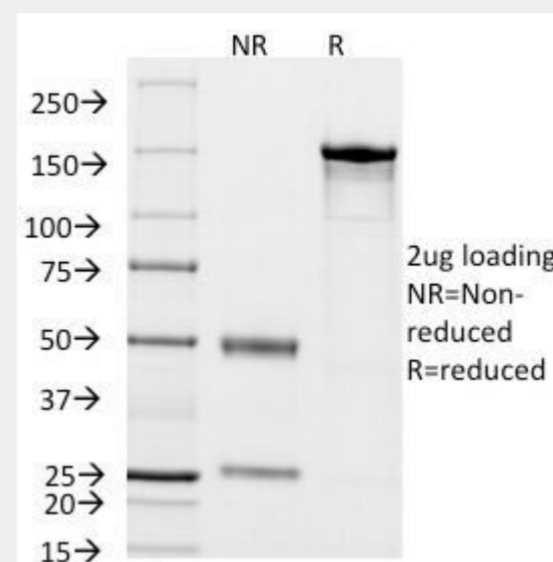
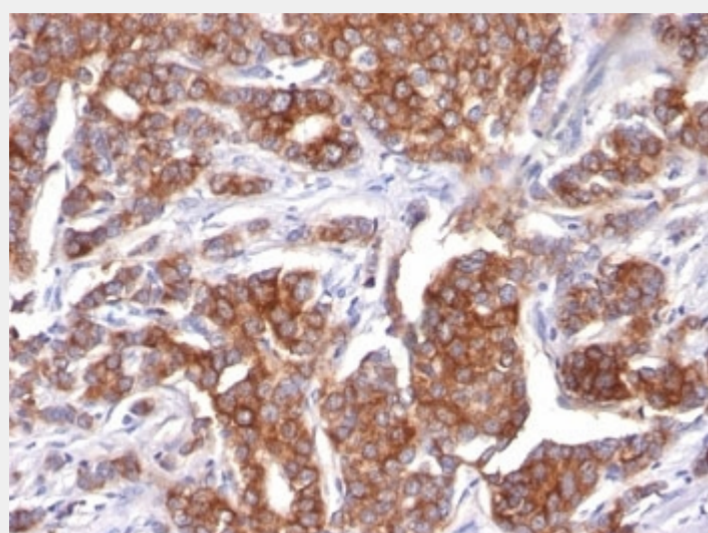
Formalin-fixed, paraffin-embedded human lung carcinoma stained with Cytokeratin 18 antibody (KRT18/834).



Formalin-fixed, paraffin-embedded human colon carcinoma stained with Cytokeratin 18 antibody (KRT18/834).



Formalin-fixed, paraffin-embedded human thyroid carcinoma stained with Cytokeratin 18 antibody (KRT18/834).



SDS-PAGE Analysis of Purified, BSA-Free Cytokeratin 18 Antibody (clone KRT18/834).  
Confirmation of Integrity and Purity of the Antibody.

All products are for RESEARCH USE ONLY. Not for diagnostic & therapeutic purposes!