

# Mitochondria Marker Antibody

Catalog No: tcna299



## Available Sizes

**Size:** 20ug

**Size:** 100ug



## Specifications

**Application:**

WB, FACS, IHC-P, IF

**Species Reactivity:**

Human. Shows broad species reactivity including insects or bacteria.

**Host Species:**

Mouse

**Immunogen / Amino acids:**

The Mitochondrial fraction of HeLa cells was used as the immunogen for this Mitochondria marker antibody.

**Conjugation:**

Unconjugated

**Clonality:**

Monoclonal

**Clones:**

MTC754

**Isotype:**

Mouse IgG1, kappa

**Form:**

Liquid

**Storage Buffer:**

0.2 mg/ml in 1X PBS with 0.1 mg/ml BSA (US sourced) and 0.05% sodium azide

---

**Concentration:**

0.2 mg/ml

---

**Recommended Dilution:**

FACS: 0.5-1ug/million cells

IF: 0.5-1ug/ml

WB: 0.5-1ug/ml

IHC (FFPE): 0.5-1ug/ml for 30 minutes at RT (1)

Prediluted format : incubate for 30 min at RT (2)The concentration stated for each application is a general starting point. Variations in protocols secondaries and substrates may require the Mitochondria marker antibody to be titered up or down for optimal performance.

1. Staining of FFPE tissues is enhanced by boiling sections in 10mM Tris with 1mM EDTA Buffer pH 9.0

for 10-20 min followed by cooling at RT for 20 min.

2. The prediluted format is supplied in a dropper bottle and is optimized for use in IHC. After epitope retrieval step (if required)

drip mAb solution onto the tissue section and incubate at RT for 30 min.

---

**Storage Instruction:**

Store the Mitochondria marker antibody at 2-8oC (with azide) or aliquot and store at -20oC or colder (without azide).

---

**SwissProt:**

Not Known

---

**Gene ID:**

Unknown (human);

---

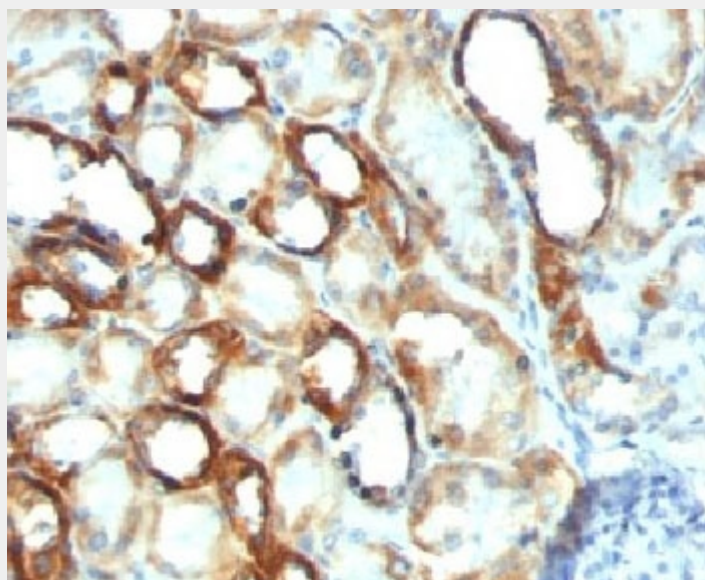
**References**

Protein G affinity chromatography

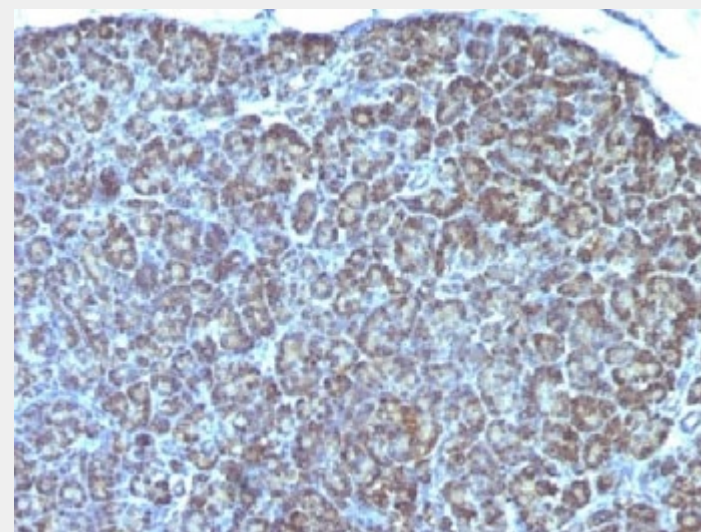
**Product Description**

MAB MTC754 recognizes a 60kDa antigen associated with the mitochondria in cells. It is a part of a new panel of reagents, which recognizes subcellular organelles or compartments of cells. These markers may be useful in identification of these organelles in cells, tissues, and biochemical preparations. MAB MTC754 recognizes an antigen associated with the mitochondria in cells from a wide variety of animals including insects and bacteria. It can be used to stain the mitochondria in cell or tissue preparations and can be used as a mitochondrial marker in subcellular fractions. It produces a spaghetti-like pattern in normal and malignant cells and may be used to stain mitochondria of cells in frozen tissue sections. It can also be used with paraformaldehyde fixed frozen tissue or cell

preparations.



IHC testing of FFPE human renal cell carcinoma with Mitochondria marker antibody



IHC testing of FFPE human pancreas with Mitochondria marker antibody

All products are for RESEARCH USE ONLY. Not for diagnostic & therapeutic purposes!