

Nuclear Marker Antibody PE Conjugate

Catalog No: tcna293pe



Available Sizes

Size: 100Tests



Specifications

Application:

FACS, IF

Species Reactivity:

Human and Primates. Does not react with mouse, rat and chicken. Other species not known.

Host Species:

Mouse

Immunogen / Amino acids:

Nuclei of human myeloid leukemia biopsy cells were used as the immunogen for this Nuclear marker antibody.

Conjugation:

PE

Clonality:

Monoclonal

Clones:

235-1

Isotype:

Mouse IgG1, kappa

Form:

Liquid

Storage Buffer:

500 ul at 0.1 mg/ml in 1X PBS with 0.1 mg/ml BSA (US sourced) and 0.05% sodium azide

Concentration:

0.1 mg/ml

Recommended Dilution:

Flow Cytometry : 5ul/test/million cells or 5ul/test/100ul of whole blood

Immunofluorescence : 1:50-1:100 for 30 minutes at RTThe concentration stated for each application is a general starting point. Variations in protocols secondaries and substrates may require the Nuclear marker antibody to be titered up or down for optimal performance.

Storage Instruction:

Store the human Nuclear antigen antibody at 2-8°C. Conjugate is light sensitive, store in the dark.

SwissProt:

Not Known

Gene ID:

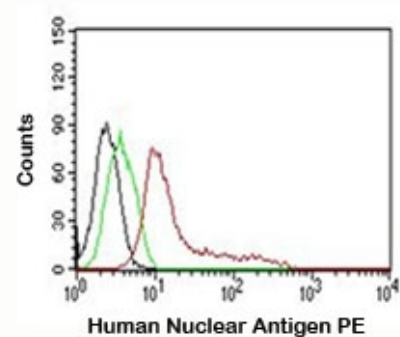
Unknown (human);

References

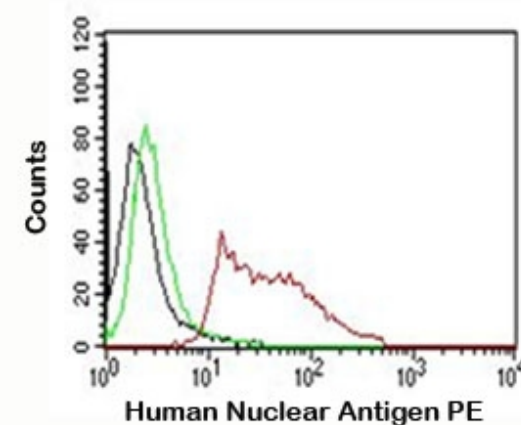
Protein G affinity chromatography

Product Description

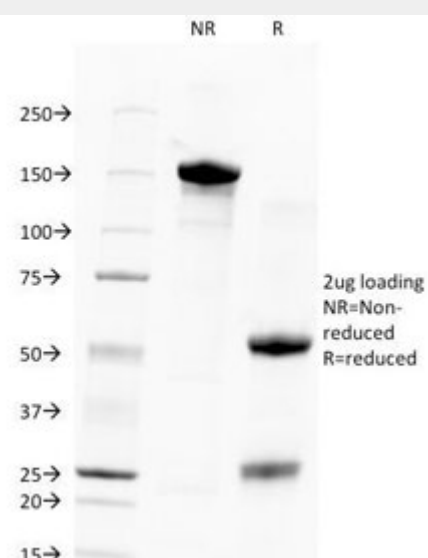
This Nuclear marker antibody is part of a panel of reagents which recognizes subcellular organelles or compartments of human cells. These markers may be useful in identification of these organelles in cells, tissues, and biochemical preparations. Clone 235-1 antibody specifically detects an antigen associated with the nuclei in human cells. It can be used to stain the nuclei in cell or tissue preparations and can be used as a nuclear marker in subcellular fractions. It produces a speckled pattern in normal and malignant cells and may be used to stain the nuclei of cells in fixed or frozen tissue sections. The human nuclear antigen antibody can also be used with paraformaldehyde fixed frozen tissue or cell preparations.



FACS testing of MCF-7 cells: Black=cells alone; Green=isotype control; Red= Nuclear marker antibody



FACS testing of HeLa cells: Black=cells alone; Green=isotype control; Red= Nuclear marker antibody



SDS-PAGE Analysis of Purified, BSA-Free, Unlabeled Human Nuclear Antigen Antibody (clone 235-1). Confirmation of Integrity and Purity of the Antibody.

All products are for RESEARCH USE ONLY. Not for diagnostic & therapeutic purposes!