

Nuclear Antigen Antibody

Catalog No: tcna293



Available Sizes

Size: 20ug

Size: 100ug



Specifications

Application:

IHC-F, ICC, FACS, IF

Species Reactivity:

Human and Primates. Does not react with mouse, rat and chicken. Other species not known.

Host Species:

Mouse

Immunogen / Amino acids:

Nuclei of human myeloid leukemia biopsy cells were used as the immunogen for this Nuclear antigen antibody.

Conjugation:

Unconjugated

Clonality:

Monoclonal

Clones:

235-1

Isotype:

Mouse IgG1, kappa

Form:

Liquid

Storage Buffer:

0.2 mg/ml in 1X PBS with 0.1 mg/ml BSA (US sourced) and 0.05% sodium azide

Concentration:

0.2 mg/ml

Recommended Dilution:

IHC (Frozen): 0.5-1ug/ml for 30 minutes at RT (1)

Immunocytochemistry (Acetone-fixed): 0.25-0.5ug/ml for 30 min at RT

FACS: 0.5-1ug/10e6 cells

IF: 0.5-1ug/ml The concentration stated for each application is a general starting point. Variations in protocols secondaries and substrates may require the Nuclear antigen antibody to be titered up or down for optimal performance.

1. Staining of formalin-fixed tissues requires boiling tissue sections in 10mM Citrate Buffer pH 6.0 for 10-20 min followed by cooling at RT for 20 minutes.

Storage Instruction:

Store the Nuclear Antigen antibody at 2-8oC (with azide) or aliquot and store at -20oC or colder (without azide).

SwissProt:

Not Known

Gene ID:

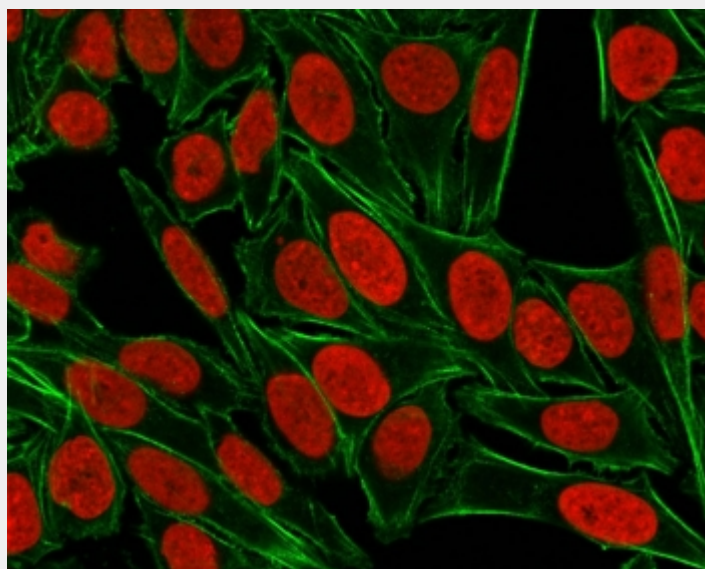
Unknown (human);

References

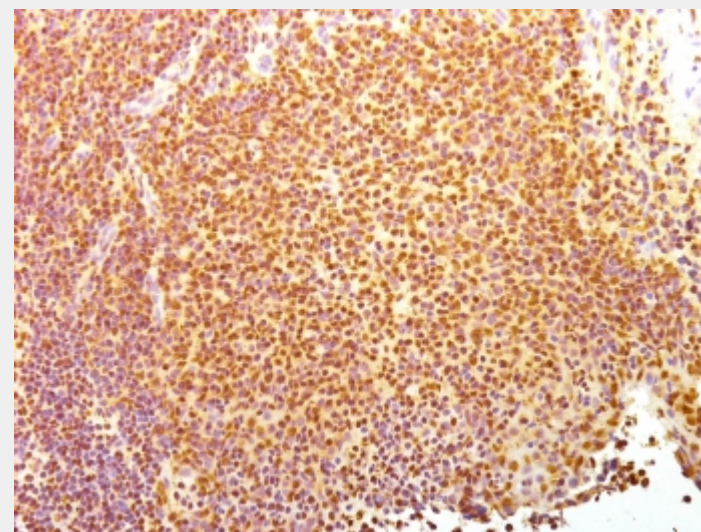
Protein G affinity chromatography

Product Description

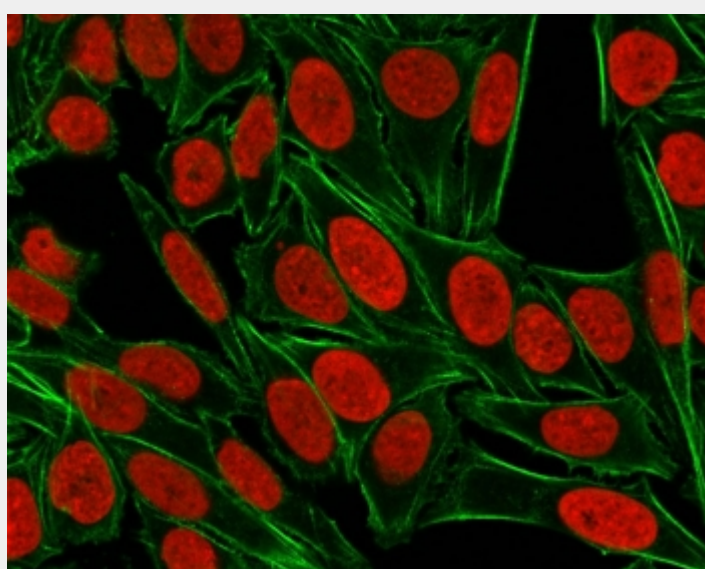
This nuclear antigen antibody is part of a panel of reagents which recognizes subcellular organelles or compartments. These markers may be useful in identification of these organelles in cells, tissues, and biochemical preparations. Clone 235-1 antibody specifically detects an antigen associated with the human nuclei. It can be used to stain the nuclei in cell or tissue preparations and can be used as a nuclear marker in subcellular fractions. It produces a speckled pattern in normal and malignant cells and may be used to stain the nuclei of cells in fixed or frozen tissue sections. The nuclear antigen antibody can also be used with paraformaldehyde fixed frozen tissue or cell preparations.



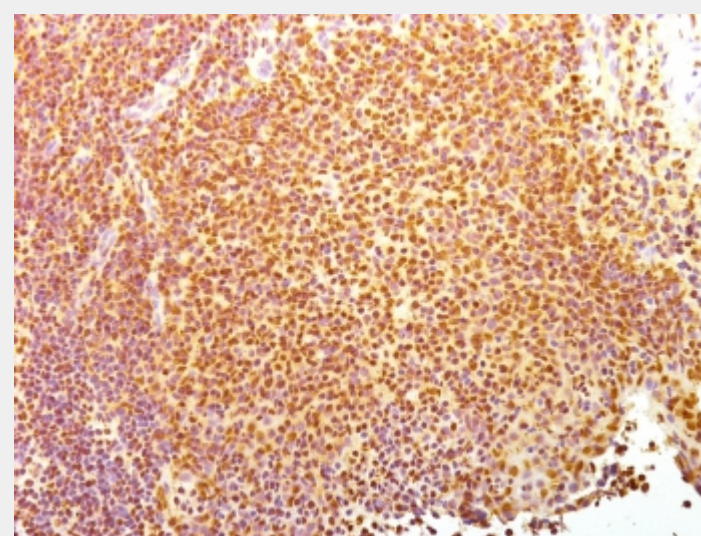
ICC staining of paraformaldehyde-fixed human HeLa cells with Nuclear Antigen antibody (red, clone 235-1) and counterstained with DyLight 488 conjugated Phalloidin (green).



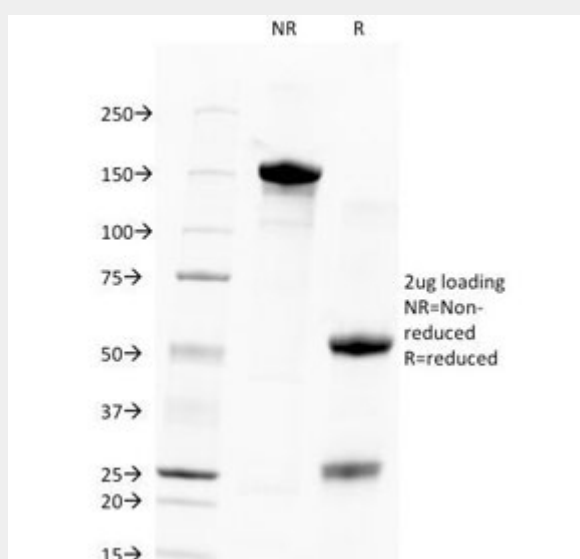
IHC testing of acetone-fixed frozen human tonsil tissue with Nuclear Antigen antibody (clone 235-1).



FACS testing of MCF-7 cells: Black=no Ab; Green=isotype control; Red=[Nuclear antigen antibody PE conjugate \(V2345PE\)](#)



FACS testing of HeLa cells: Black=no Ab; Green=isotype control; Red=[Nuclear antigen antibody PE conjugate \(V2345PE\)](#)



SDS-PAGE Analysis of Purified, BSA-Free Human Nuclear Antigen Antibody (clone 235-1). Confirmation of Integrity and Purity of the Antibody.

All products are for RESEARCH USE ONLY. Not for diagnostic & therapeutic purposes!