

# Muscle Actin Antibody- sodium azide free

## Catalog No: tcna274saf



### Available Sizes

**Size:** 100ug



### Specifications

**Application:**

WB FACS, IHC-P, IF

**Species Reactivity:**

Human, Mouse, Rabbit and Rat. Other species not known.

**Host Species:**

Mouse

**Immunogen / Amino acids:**

SDS extract of human myocardium was used as the immunogen for this Muscle actin HHF35 antibody.

**Conjugation:**

Unconjugated

**Clonality:**

Monoclonal

**Clones:**

HHF35

**Isotype:**

Mouse IgG1, kappa

**Form:**

Liquid

**Storage Buffer:**

1 mg/ml in 1X PBS; BSA free, sodium azide free

**Concentration:**

1 mg/ml

---

**Recommended Dilution:**

Western blot: 0.5-1ug/ml

FACS: 0.5-1ug/million cells

IF: 0.5-1ug/ml

IHC (FFPE): 0.5-1.0ug/ml for 30 minutes at RT (1)

Prediluted format : incubate for 30 min at RT (2)The concentration stated for each application is a general starting point. Variations in protocols

secondaries and substrates may require the Muscle actin HHF35 antibody to be titered up or down for optimal performance.

1. No special pretreatment is required for the IHC staining of formalin-fixed paraffin-embedded tissues.

2. The prediluted format is supplied in a dropper bottle and is optimized for use in IHC. After epitope retrieval step (if required)

drip mAb solution onto the tissue section and incubate at RT for 30 min.

---

**Storage Instruction:**

Store the Muscle Actin antibody at 2-8oC (with azide) or aliquot and store at -20oC or colder (without azide).

---

**SwissProt:**

P62736

---

**Gene ID:**

58 (human);

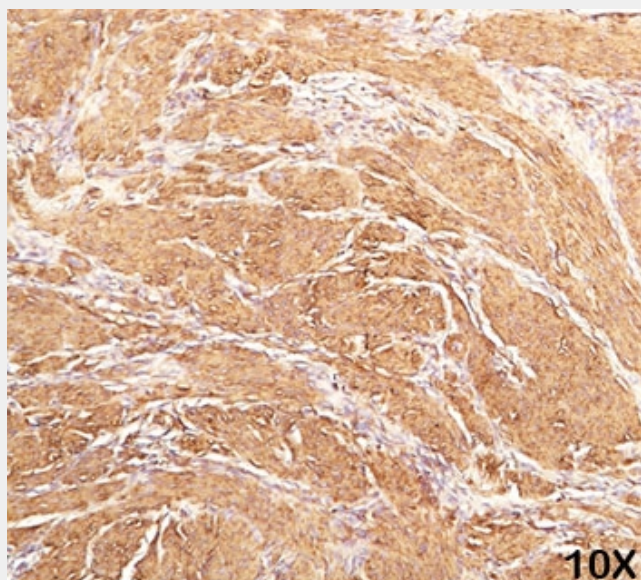
---

**References**

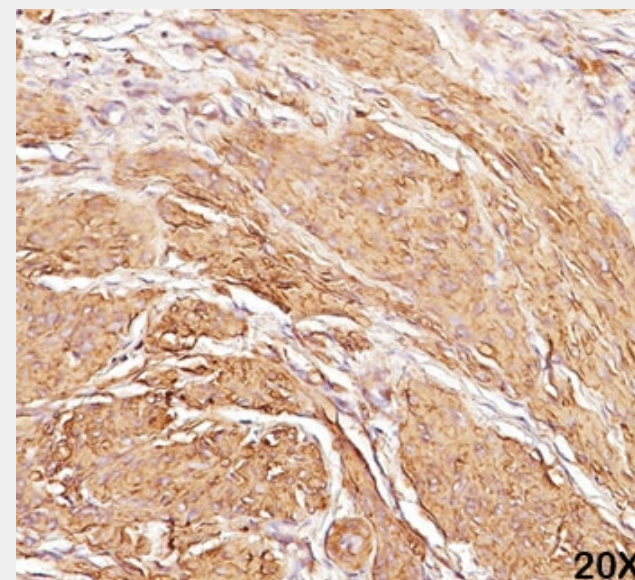
Protein G affinity chromatography

**Product Description**

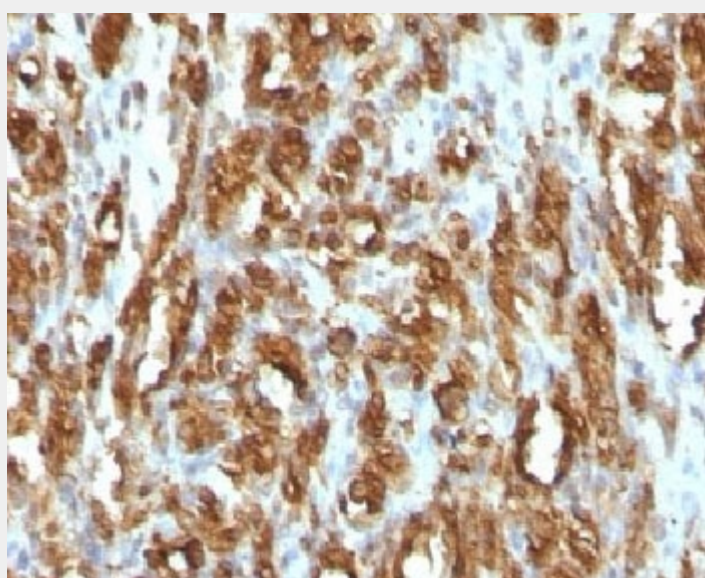
This antibody recognizes actin of skeletal, cardiac, and smooth muscle cells. It is not reactive with other mesenchymal cells except for myoepithelium. Actin can be resolved on the basis of its isoelectric points into three distinctive components: alpha, beta, and gamma in order of increasing isoelectric point. This mAb recognizes alpha and gamma isotypes of all muscle groups. Nonmuscle cells such as vascular endothelial cells and connective tissues are non-reactive. Also, neoplastic cells of nonmuscle-derived tissue such as carcinomas, melanomas, and lymphomas are negative. It stains tumors of smooth (leiomyomas and leiomyosarcomas) as well as skeletal muscle (rhabdomyomas and rhabdomyosarcomas).



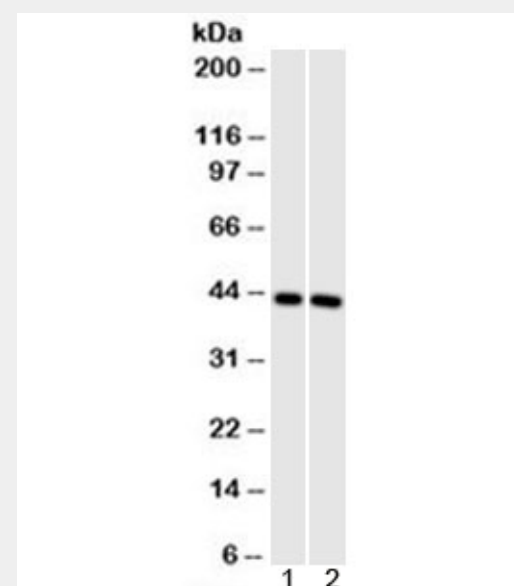
IHC staining of human leiomyosarcoma (10X) with Muscle actin antibody (HHF35).



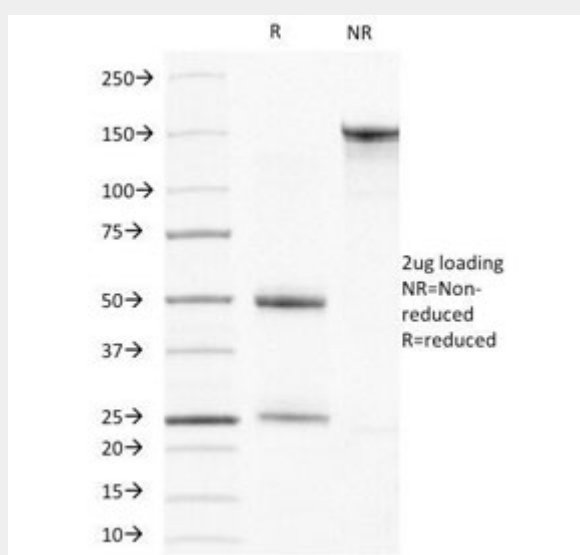
IHC staining of human leiomyosarcoma (20X) with Muscle actin antibody (HHF35).



IHC testing of FFPE rhabdomyosarcoma with Muscle Actin antibody



Western blot testing of 1) human muscle and 2) mouse muscle cell lysate with Muscle Actin antibody (clone HHF35).



SDS-PAGE Analysis of Purified, BSA-Free Muscle Actin Antibody (clone HHF35).  
Confirmation of Integrity and Purity of the Antibody.

All products are for RESEARCH USE ONLY. Not for diagnostic & therapeutic purposes!