

Recombinant Rabbit Anti-Human IgD Antibody- sodium azide free

Catalog No: tcna4766saf



Available Sizes

Size: 100ug



Specifications

Application:

ICC, IHC, FACS, ELISA

Species Reactivity:

Human

Host Species:

Rabbit

Immunogen / Amino acids:

Human IgD was used as the immunogen for this recombinant Human IgD antibody.

Conjugation:

Purified

Clonality:

Recombinant Rabbit Monoclonal

Clones:

RM123

Isotype:

Rabbit IgG

Form:

Liquid

Storage Buffer:

1 mg/ml in PBS without glycerol/BSA/sodium azide

Recommended Dilution:

ELISA: 25ng/well - 200ng/well (Capture); 0.01 - 0.1ug/ml (Detection)

Immunocytochemistry: 0.5-2ug/ml

Immunohistochemistry: 0.5-2ug/ml The stated application concentrations are suggested starting points. Titration of the recombinant Human IgD antibody may be required due to differences in protocols and secondary/substrate sensitivity.

Storage Instruction:

Store the recombinant Human IgD antibody at -20oC (with glycerol) or aliquot and store at -20oC (without glycerol).

SwissProt:

P01880

Gene ID:

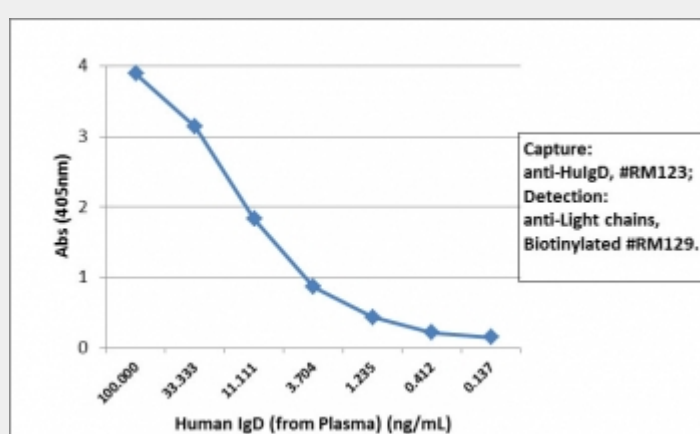
3495 (human);

References

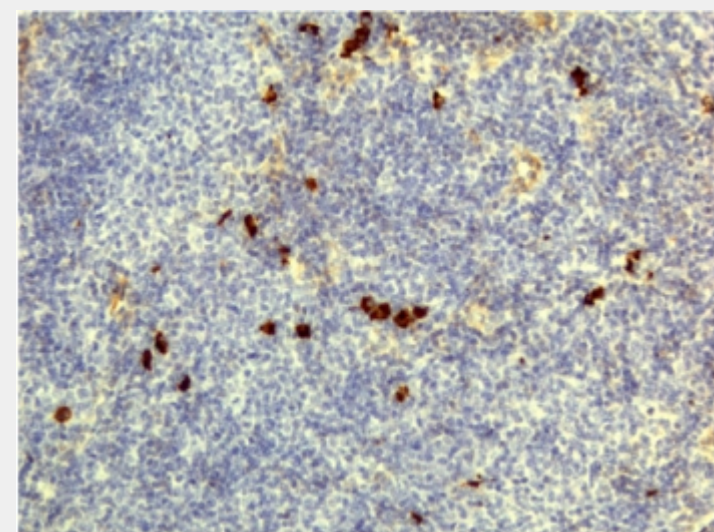
Purified

Product Description

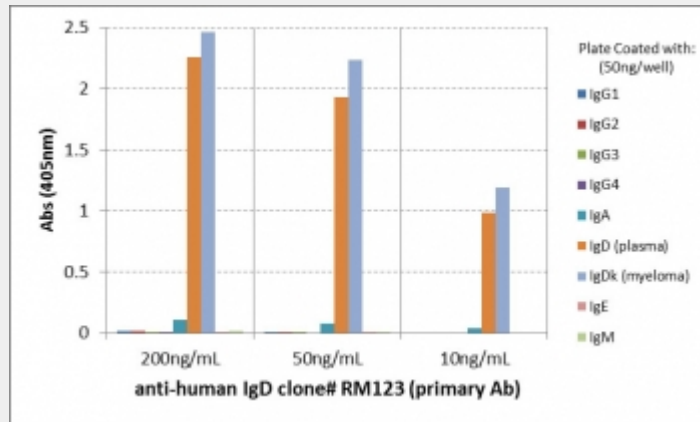
This recombinant Human IgD antibody reacts to human IgD. No cross reactivity with human IgG, IgM, IgA, or IgE.



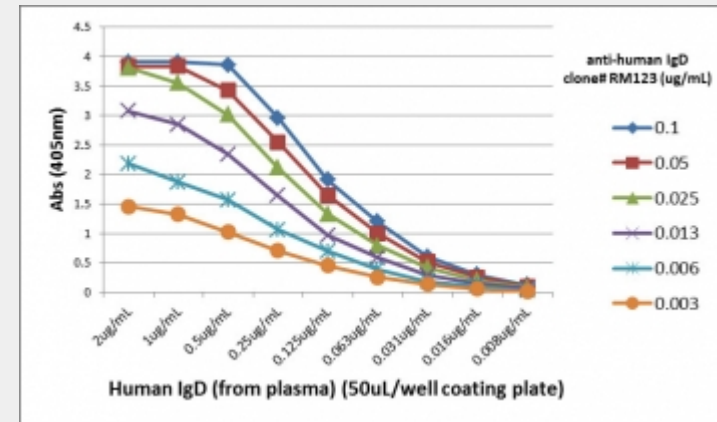
Sandwich ELISA of human plasma using recombinant Human IgD antibody as the capture (100ng/well) and [biotinylated anti-human light chains \(, kappa+, lambda\) antibody RM129](#) as the detect, followed by an alkaline phosphatase conjugated streptavidin.



IHC testing of FFPE human lymphoid tissue with recombinant Human IgD antibody. A pH6 Citrate buffer or pH9 Tris/EDTA buffer HIER step is recommended for testing of FFPE tissue sections.



ELISA of hIgs shows recombinant Human IgD antibody reacts to IgD from human plasma and IgD, kappa from human myeloma. No cross reactivity with IgG, IgM, IgA, or IgE.



ELISA Titration: the plate was coated with different amounts of human IgD (from plasma). A serial dilution of recombinant Human IgD antibody was used as the primary and an alkaline phosphatase conjugated anti-rabbit IgG as the secondary.

All products are for RESEARCH USE ONLY. Not for diagnostic & therapeutic purposes!