

# Recombinant Rabbit Anti-Human IgD Antibody

Catalog No: tcna4766



## Available Sizes

---

**Size:** 50ug

**Size:** 100ug



## Specifications

---

**Application:**

ICC, IHC, FACS, ELISA

**Species Reactivity:**

Human

**Host Species:**

Rabbit

**Immunogen / Amino acids:**

Human IgD was used as the immunogen for this recombinant Human IgD antibody.

**Conjugation:**

Biotin Conjugate

**Clonality:**

Recombinant Rabbit Monoclonal

**Clones:**

RM123

**Isotype:**

Rabbit IgG

**Form:**

Liquid

**Storage Buffer:**

1 mg/ml in PBS with 50% glycerol, 1% BSA and 0.09% sodium azide

#### Recommended Dilution:

ELISA: 25ng/well - 200ng/well (Capture); 0.01 - 0.1ug/ml (Detection)

Immunocytochemistry: 0.5-2ug/ml

Immunohistochemistry: 0.5-2ug/ml The stated application concentrations are suggested starting points. Titration of the recombinant Human IgD antibody may be required due to differences in protocols and secondary/substrate sensitivity.

#### Storage Instruction:

Store the recombinant Human IgD antibody at -20oC (with glycerol) or aliquot and store at -20oC (without glycerol).

#### SwissProt:

P01880

#### Gene ID:

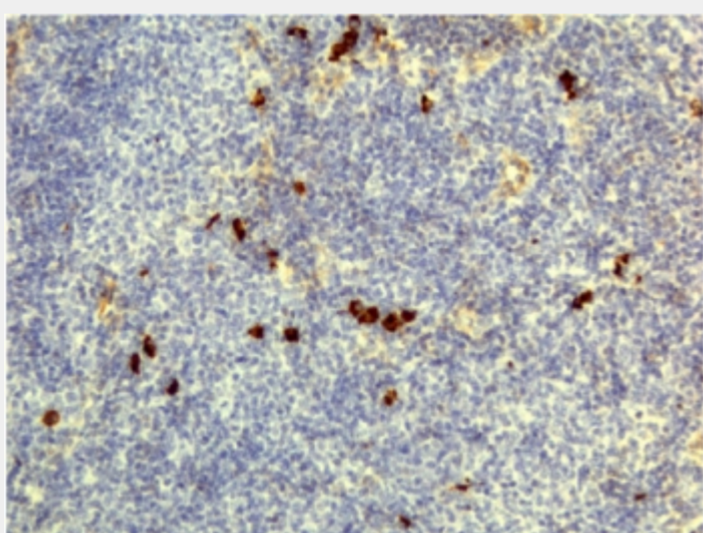
3495 (human);

#### References

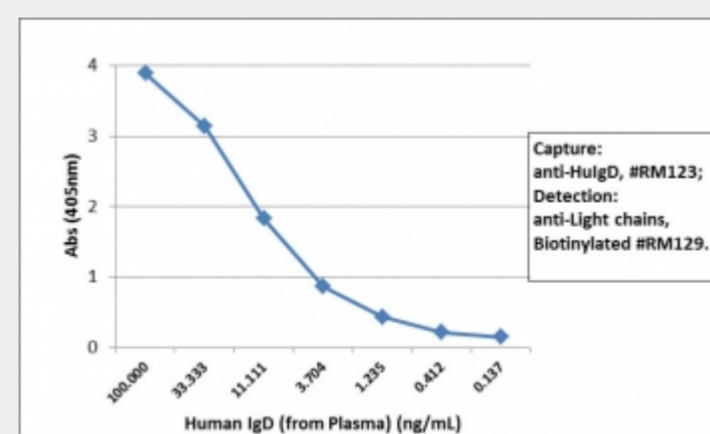
Biotin Conjugate

#### Product Description

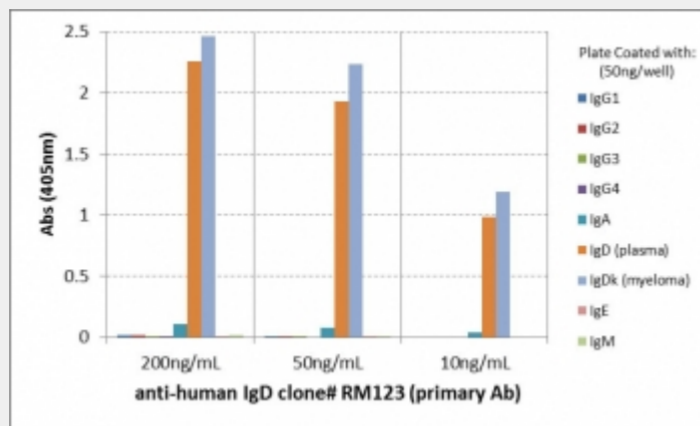
This recombinant Human IgD antibody reacts to hIgD. No cross reactivity with IgG, IgM, IgA, or IgE.



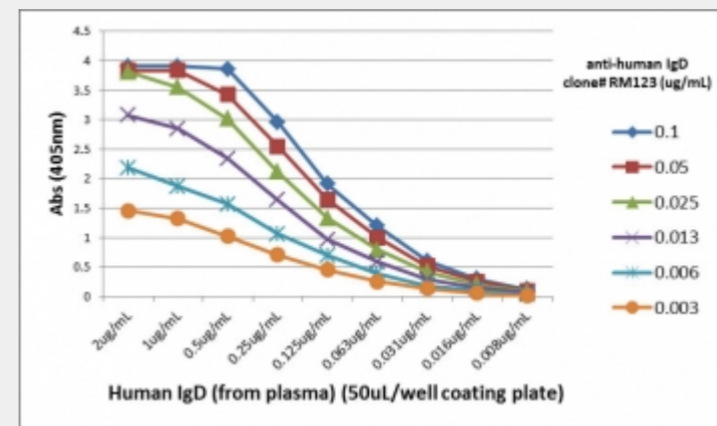
IHC testing of FFPE human lymphoid tissue with recombinant Human IgD antibody. A pH6 Citrate buffer or pH9 Tris/EDTA buffer HIER step is recommended for testing of FFPE tissue sections.



Sandwich ELISA of human plasma using recombinant Human IgD antibody as the capture (100ng/well) and [biotinylated anti-human light chains \(, kappa+, lambda\) antibody RM129](#) as the detect, followed by an alkaline phosphatase conjugated streptavidin.



ELISA of hIgs shows recombinant Human IgD antibody reacts to IgD from human plasma and IgD, kappa from human myeloma. No cross reactivity with IgG, IgM, IgA, or IgE.



ELISA Titration: the plate was coated with different amounts of human IgD (from plasma). A serial dilution of recombinant Human IgD antibody was used as the primary and an alkaline phosphatase conjugated anti-rabbit IgG as the secondary.

All products are for RESEARCH USE ONLY. Not for diagnostic & therapeutic purposes!