

Recombinant Rabbit Anti-Mouse IgM Antibody

Catalog No: tcna4751



Available Sizes

Size: 50ug

Size: 100ug



Specifications

Application:

ICC, IHC, FACS, ELISA

Species Reactivity:

Mouse

Host Species:

Rabbit

Immunogen / Amino acids:

Mouse IgM was used as the immunogen for this recombinant Mouse IgM antibody.

Conjugation:

Biotin Conjugate

Clonality:

Recombinant Rabbit Monoclonal

Clones:

RM109

Isotype:

Rabbit IgG

Form:

Liquid

Storage Buffer:

1 mg/ml in PBS with 50% glycerol, 1% BSA and 0.09% sodium azide

Recommended Dilution:

ELISA: 0.005ug/ml - 0.2ug/ml

Immunocytochemistry: 0.5-2ug/ml

Immunohistochemistry (FFPE): 0.5-2ug/ml (1)The stated application concentrations are suggested starting points.

Titration of the recombinant Mouse IgM antibody may be required due to differences in protocols and secondary/substrate sensitivity.

1. A pH6 Citrate buffer or pH9 Tris/EDTA buffer HIER step is recommended for testing of FFPE tissue sections.

Storage Instruction:

Store the recombinant Mouse IgM antibody at -20oC (with glycerol) or aliquot and store at -20oC (without glycerol).

SwissProt:

P01872

Gene ID:

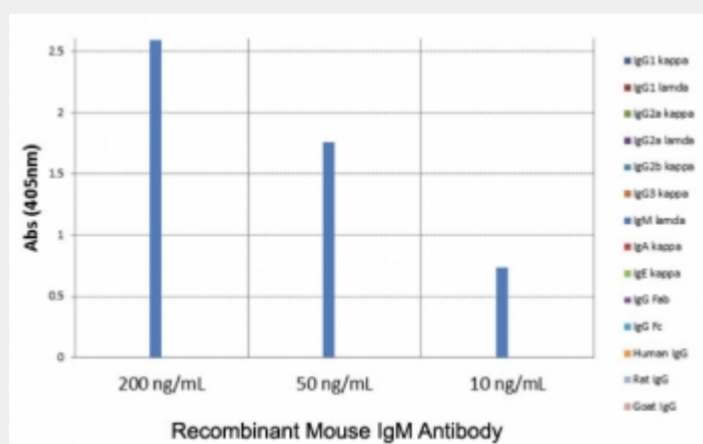
16019 (human);

References

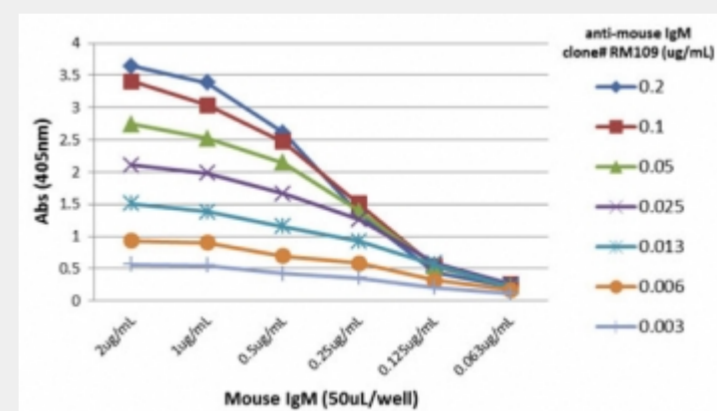
Biotin Conjugate

Product Description

This recombinant Mouse IgM antibody reacts to mouse IgM. No cross reactivity with mouse IgG1, IgG2a, IgG2b, IgG3, IgA, IgE, human IgG, rat IgG, or goat IgG.



ELISA of mouse immunoglobulins shows the recombinant Mouse IgM antibody reacts to mouse IgM; no cross reactivity with IgG1, IgG2a, IgG2b, IgG3, IgA, IgE, human IgG, rat IgG, or goat IgG.



ELISA Titration: the plate was coated with different amounts of mouse IgM. A serial dilution of recombinant Mouse IgM antibody was used as the primary and an alkaline phosphatase conjugated anti-rabbit IgG as the secondary.

All products are for RESEARCH USE ONLY. Not for diagnostic & therapeutic purposes!