

# Mouse Anti-Human IgM Antibody- sodium azide free

## Catalog No: tcna1775saf



### Available Sizes

---

**Size:** 100ug

---



### Specifications

---

**Application:**

FACS, IF, WB, IHC-P

---

**Species Reactivity:**

Human. Other species not known.

---

**Host Species:**

Mouse

---

**Immunogen / Amino acids:**

Recombinant heavy chain of human IgM was used as the immunogen for this IgM antibody.

---

**Conjugation:**

Unconjugated

---

**Clonality:**

Monoclonal

---

**Clones:**

SPM557

---

**Isotype:**

Mouse IgG1, kappa

---

**Form:**

Liquid

---

**Storage Buffer:**

1 mg/ml in 1X PBS; BSA free, sodium azide free

---

**Concentration:**

1 mg/ml

---

**Recommended Dilution:**

Flow Cytometry: 0.5-1ug/million cells in 0.1ml

Immunofluorescence: 0.5-1ug/ml

Western blot: 0.5-1ug/ml

Immunohistochemistry (FFPE): 0.5-1ug/ml for 30 minutes at RT (1)

Prediluted format : incubate for 30 min at RT (2)The optimal dilution of the IgM antibody for each application should be determined by the researcher.

1. Staining of formalin-fixed tissues requires boiling tissue sections in 10mM citrate buffer pH 6.0

for 10-20 min followed by cooling at RT for 20 minutes.

2. The prediluted format is supplied in a dropper bottle and is optimized for use in IHC. After epitope retrieval step (if required)

drip mAb solution onto the tissue section and incubate at RT for 30 min.

---

**Storage Instruction:**

Store the IgM antibody at 2-8oC (with azide) or aliquot and store at -20oC or colder (without azide).

---

**SwissProt:**

P01871, P20769

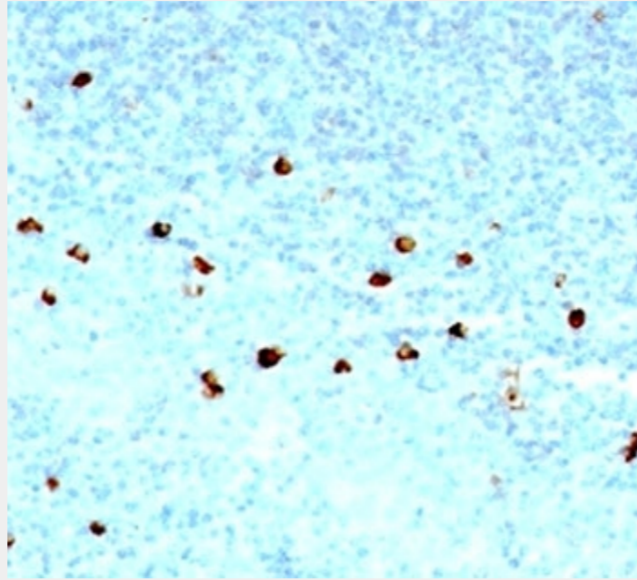
---

**References**

Protein G affinity chromatography

**Product Description**

Recognizes a protein of 75kDa, identified as mu heavy chain of human immunoglobulins. It does not cross-react with alpha (IgA), gamma (IgG), epsilon (IgE), or delta (IgD), heavy chains, T-cells, monocytes, granulocytes, or erythrocytes. This mAb is useful in the identification of leukemias, plasmacytomas, and certain non-Hodgkins lymphomas. The most common feature of these malignancies is the restricted expression of a single heavy chain class. Demonstration of clonality in lymphoid infiltrates indicates that the infiltrate is clonal and therefore malignant.



Formalin-fixed, paraffin-embedded human tonsil stained with IgM antibody (SPM557)

All products are for RESEARCH USE ONLY. Not for diagnostic & therapeutic purposes!