

Mouse Anti-Human IgM Antibody Cocktail

Catalog No: tcna539



Available Sizes

Size: 20ug

Size: 100ug



Specifications

Application:

FACS, IF, WB, IHC-P

Species Reactivity:

Human. Other species not tested.

Host Species:

Mouse

Immunogen / Amino acids:

Recombinant heavy chain of human IgM (IM260 IM373 & ICO-30) was used as the immunogen for the Anti-IgM antibody cocktail.

Conjugation:

Unconjugated

Clonality:

Monoclonal

Clones:

IM260 + IM373 + ICO-30

Isotype:

Mouse IgG1 and IgG2b, kappa

Form:

Liquid

Storage Buffer:

0.2 mg/ml in 1X PBS with 0.1 mg/ml BSA (US sourced) and 0.05% sodium azide

Concentration:

0.2 mg/ml

Recommended Dilution:

Flow Cytometry: 0.5-1ug/million cells in 0.1ml

Immunofluorescence: 0.5-1ug/ml

Western blot: 0.5-1ug/ml

Immunohistochemistry (FFPE): 0.5-1ug/ml for 30 min at RT (1)

Prediluted format : incubate for 30 min at RT (2)Optimal dilution of the Anti-IgM antibody cocktail should be determined by the researcher.

1. Staining of formalin-fixed tissues requires boiling tissue sections in 10mM Citrate buffer

pH 6.0

for 10-20 min followed by cooling at RT for 20 min

2. The prediluted format is supplied in a dropper bottle and is optimized for use in IHC. After epitope retrieval step (if required)

drip mAb solution onto the tissue section and incubate at RT for 30 min.

Storage Instruction:

Store the Anti-IgM antibody cocktail at 2-8oC (with azide) or aliquot and store at -20oC or colder (without azide).

SwissProt:

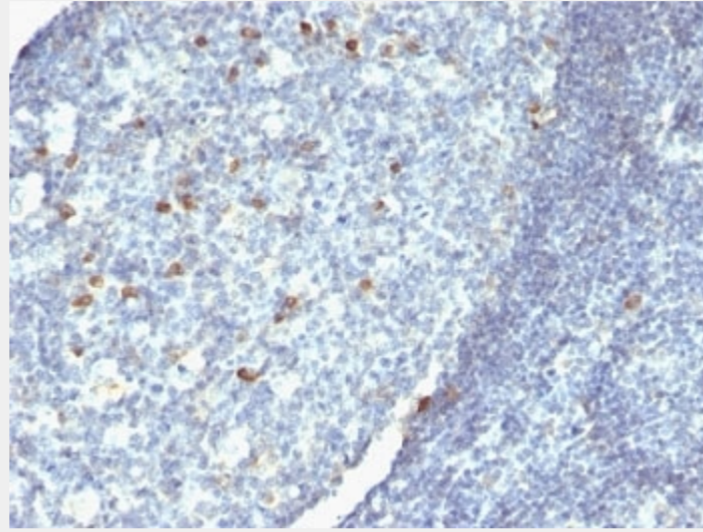
P01871 & P20769

References

Protein G affinity chromatography

Product Description

Recognizes a protein of 75kDa, identified as mu heavy chain of human immunoglobulins. It does not cross-react with alpha (IgA), gamma (IgG), epsilon (IgE), or delta (IgD), heavy chains, T-cells, monocytes, granulocytes, or erythrocytes. This mAb is useful in the identification of leukemias, plasmacytomas, and certain non-Hodgkins lymphomas. The most common feature of these malignancies is the restricted expression of a single heavy chain class. Demonstration of clonality in lymphoid infiltrates indicates that the infiltrate is clonal and therefore malignant.



Formalin-fixed, paraffin-embedded human tonsil stained with anti-IgM antibody (IM260 + IM373 + ICO-30)

All products are for RESEARCH USE ONLY. Not for diagnostic & therapeutic purposes!