

Mouse Anti-Human IgM Antibody- prediluted

Catalog No: tcna537pre



Available Sizes

Size: 7ml



Specifications

Application:

IHC-P

Species Reactivity:

Human. Other species not tested.

Host Species:

Mouse

Immunogen / Amino acids:

The Mu heavy chain of human Ig was used as the immunogen for the Anti-IgM antibody.

Conjugation:

Unconjugated

Clonality:

Monoclonal

Clones:

ICO-30

Isotype:

Mouse IgG1, kappa

Form:

Liquid

Storage Buffer:

Prediluted in 1X PBS with 0.1 mg/ml BSA (US sourced) and 0.05% sodium azide; *For IHC use only*

Recommended Dilution:

Prediluted IHC only format : incubate for 30 min at RT (2)Optimal dilution of the Anti-IgM antibody should be determined by the researcher.

1. Staining of formalin/paraffin tissues requires boiling tissue sections in 10mM Citrate buffer pH 6.0

for 10-20 min followed by cooling at RT for 20 min.

2. The prediluted format is supplied in a dropper bottle and is optimized for use in IHC. After epitope retrieval step (if required)

drip mAb solution onto the tissue section and incubate at RT for 30 min.

Storage Instruction:

Store the Anti-IgM antibody at 2-8oC (with azide) or aliquot and store at -20oC or colder (without azide).

SwissProt:

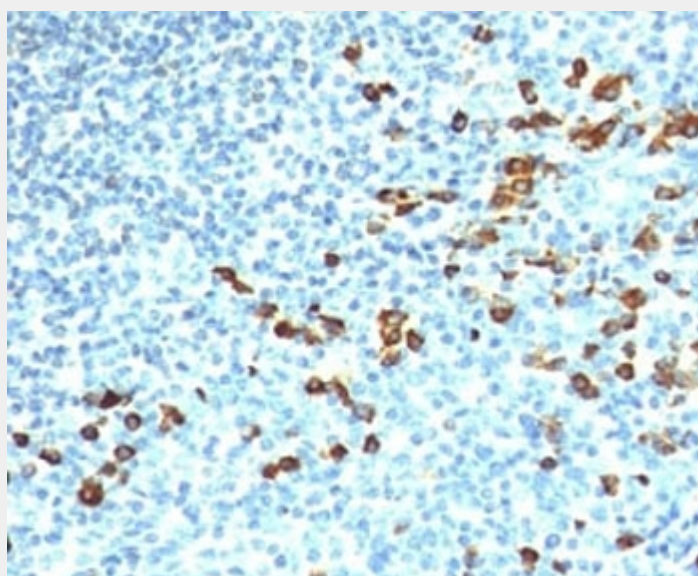
P01871 & P20769

References

Protein G affinity chromatography

Product Description

Recognizes a protein of 75kDa, identified as mu heavy chain of human immunoglobulins. It does not cross-react with alpha (IgA), gamma (IgG), epsilon (IgE), or delta (IgD), heavy chains, T-cells, monocytes, granulocytes, or erythrocytes. Monomeric IgM is expressed as a membrane bound antibody on the surface of B cells and as a pentamer when secreted by plasma cells. IgM antibody is prominent in early immune responses to most antigens. Aberrant levels are associated with immune deficiency states, hereditary deficiencies, myeloma, Waldenstrom\'s macroglobulinemia, chronic infection and hepatocellular disease. This mAb is useful in the identification of leukemias, plasmacytomas, and certain non-Hodgkins lymphomas. The most common feature of these malignancies is the restricted expression of a single heavy chain class. Demonstration of clonality in lymphoid infiltrates indicates that the infiltrate is clonal and therefore malignant.



Formalin-fixed, paraffin-embedded human tonsil stained with anti-IgM antibody (ICO-30)

All products are for RESEARCH USE ONLY. Not for diagnostic & therapeutic purposes!