

# Recombinant Rabbit Anti-Human IgG4 Antibody

Catalog No: tcna4771



## Available Sizes

---

**Size:** 50ug

**Size:** 100ug



## Specifications

---

**Application:**

WB, ICC, IHC, FACS, ELISA

**Species Reactivity:**

Human

**Host Species:**

Rabbit

**Immunogen / Amino acids:**

Peptide corresponding to the hinge region of human IgG4 was used as the immunogen for this recombinant Human IgG4 antibody.

**Conjugation:**

Biotin Conjugate

**Clonality:**

Recombinant Rabbit Monoclonal

**Clones:**

RM120

**Isotype:**

Rabbit IgG

**Form:**

Liquid

**Storage Buffer:**

1 mg/ml in PBS with 50% glycerol, 1% BSA and 0.09% sodium azide

**Recommended Dilution:**

ELISA: 50ng/well - 200ng/well (Capture); 0.05-0.2ug/ml (Detection)

Western Blot: 0.5-2ug/ml

Immunocytochemistry: 1-10ug/ml

Immunohistochemistry: 1-10ug/ml (1)The stated application concentrations are suggested starting points. Titration of the recombinant Human IgG4 antibody may be required due to differences in protocols and secondary/substrate sensitivity.

1. A pH6 Citrate buffer or pH9 Tris/EDTA buffer HIER step is recommended for testing of FFPE tissue sections.

**Storage Instruction:**

Store the recombinant Human IgG4 antibody at -20oC (with glycerol) or aliquot and store at -20oC (without glycerol).

**SwissProt:**

P01861

**Gene ID:**

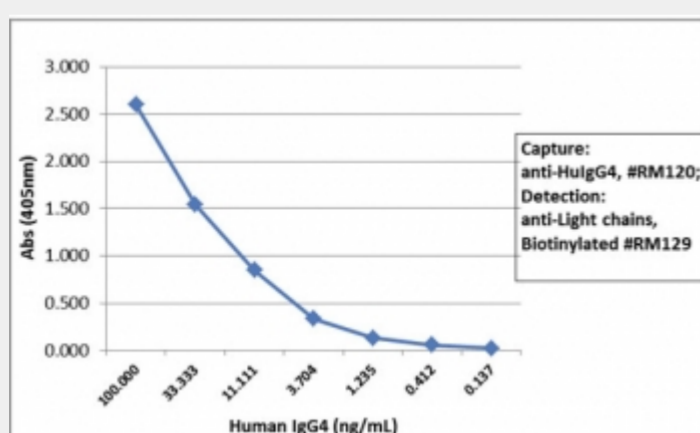
3503 (human);

**References**

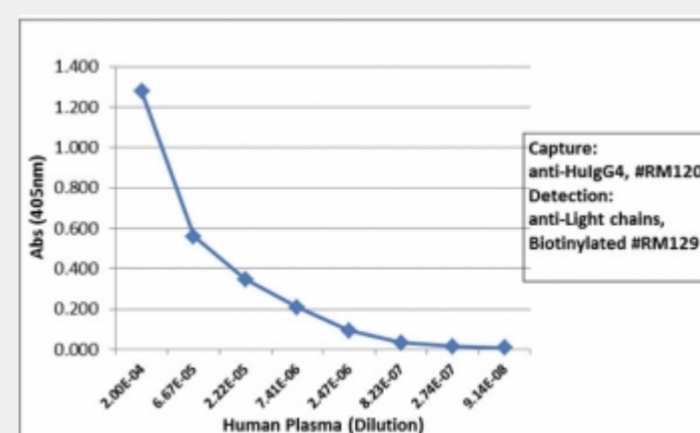
Biotin Conjugate

**Product Description**

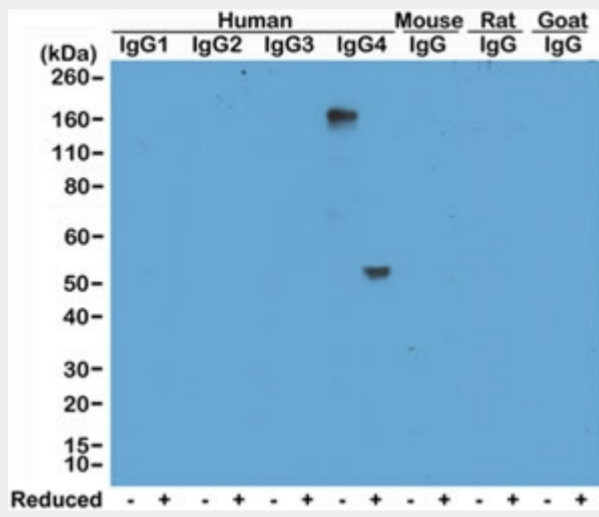
This recombinant Human IgG4 antibody reacts to the heavy chain of human IgG4. No cross reactivity with human IgG1, IgG2, IgG3, IgM, IgA, IgD, IgE, mouse IgG, rat IgG, or goat IgG.



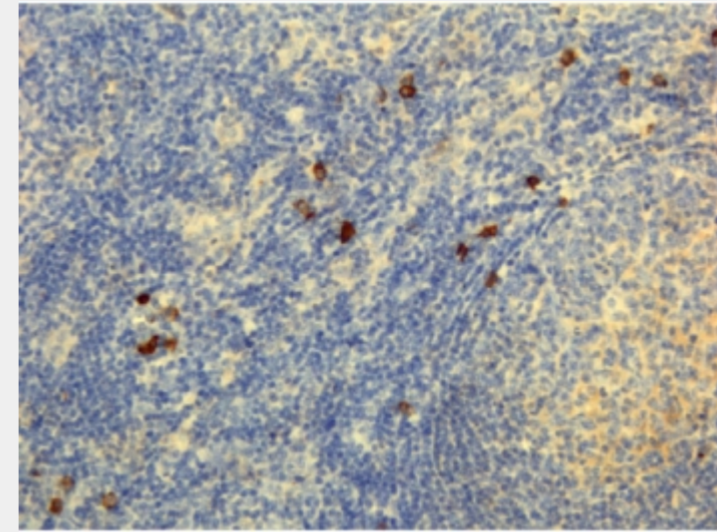
Sandwich ELISA with human IgG4 using recombinant Human IgG4 antibody as the capture, and biotinylated anti-human light chains (, kappa+, lambda) antibody RM129 as the detect, followed by an AP conjugated streptavidin.



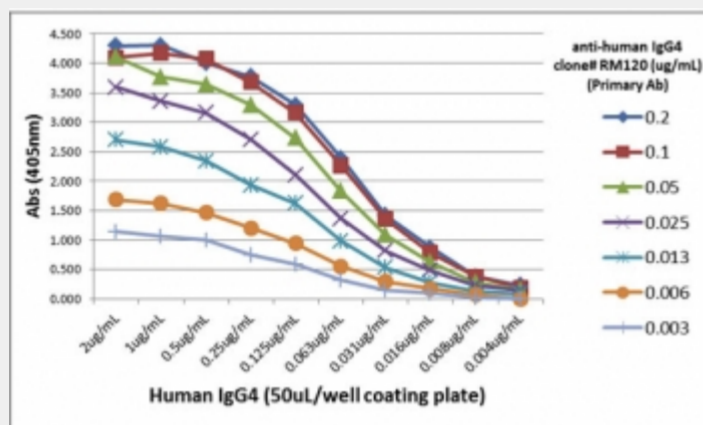
Sandwich ELISA with human plasma using recombinant Human IgG4 antibody as the capture, and biotinylated anti-human light chains (, kappa+, lambda) antibody RM129 as the detect, followed by an AP conjugated streptavidin.



Western blot of human, mouse, rat, and goat IgG shows the recombinant Human IgG4 antibody reacts to hIgG4, in both whole molecule (~150kDa, non-reduced) and heavy chain (~50kDa, reduced) forms. No cross reactivity with other isotypes of hIgG, or mouse/rat/goat IgG.



IHC testing of FFPE human lymphoid tissue with recombinant Human IgG4 antibody.



ELISA Titration: the plate was coated with different amounts of hIgG4. A serial dilution of recombinant Human IgG4 antibody was used as the primary and an alkaline phosphatase conjugated anti-rabbit IgG as the secondary.

All products are for RESEARCH USE ONLY. Not for diagnostic & therapeutic purposes!