

# Recombinant Rabbit Anti-Human IgG1 Antibody- sodium azide free

Catalog No: tcna4768saf



## Available Sizes

---

**Size:** 100ug

---



## Specifications

---

**Application:**

ICC, IHC, FACS, ELISA

---

**Species Reactivity:**

Human

---

**Host Species:**

Rabbit

---

**Immunogen / Amino acids:**

Peptide corresponding to the hinge region of human IgG1 was used as the immunogen for this recombinant Human IgG1 antibody.

---

**Conjugation:**

Purified

---

**Clonality:**

Recombinant Rabbit Monoclonal

---

**Clones:**

RM117

---

**Isotype:**

Rabbit IgG

---

**Form:**

Liquid

---

**Storage Buffer:**

1 mg/ml in PBS without glycerol/BSA/sodium azide

**Recommended Dilution:**

ELISA: 50ng/well - 200ng/well (Capture); 0.05-0.2ug/ml (Detection)

Immunocytochemistry: 0.5-2ug/ml

Immunohistochemistry: 0.5-2ug/ml (1)The stated application concentrations are suggested starting points. Titration of the recombinant Human IgG1 antibody may be required due to differences in protocols and secondary/substrate sensitivity.

1. A pH6 Citrate buffer or pH9 Tris/EDTA buffer HIER step is recommended for testing of FFPE tissue sections.

**Storage Instruction:**

Store the recombinant Human IgG1 antibody at -20oC (with glycerol) or aliquot and store at -20oC (without glycerol).

**SwissProt:**

P01857

**Gene ID:**

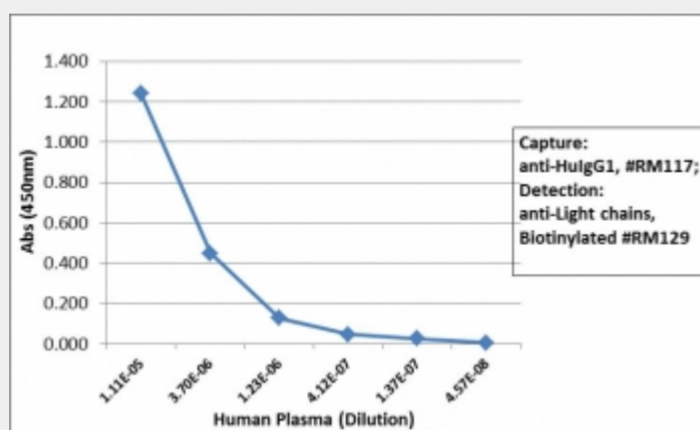
3500 (human);

**References**

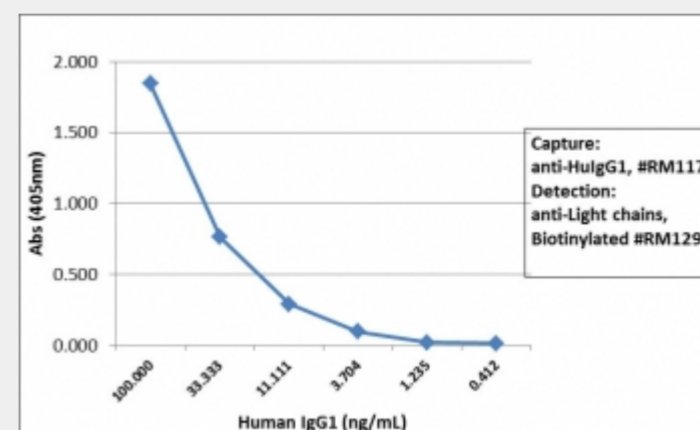
Purified

**Product Description**

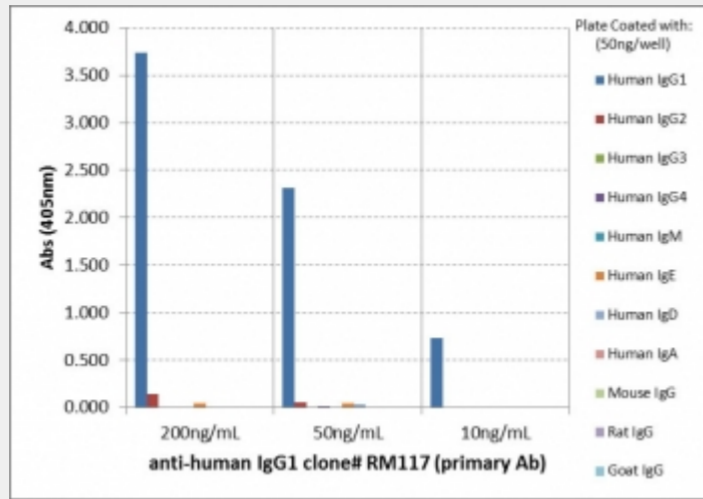
This recombinant Human IgG1 antibody reacts to the heavy chain of hIgG1. No cross reactivity with IgG2, IgG3, IgG4, IgM, IgA, IgD, IgE, mouse/rat/goat IgG.



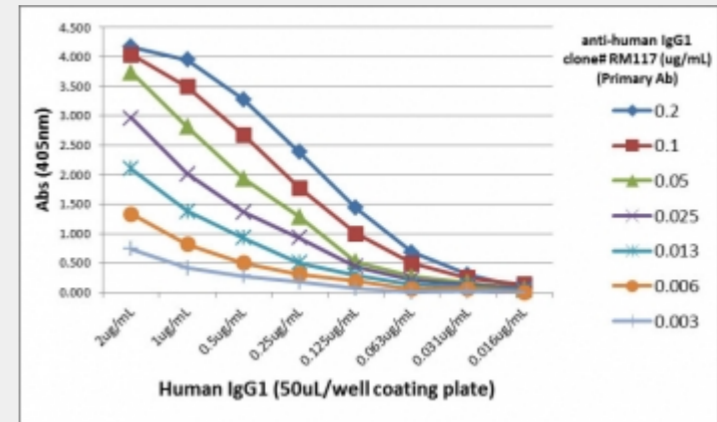
Sandwich ELISA with human plasma using recombinant Human IgG1 antibody as the capture, and [biotinylated anti-human light chains \(, kappa+, lambda\) antibody RM129](#) as the detect, followed by an AP conjugated streptavidin.



Sandwich ELISA with human IgG1 using recombinant Human IgG1 antibody as the capture, and [biotinylated anti-human light chains \(, kappa+, lambda\) antibody RM129](#) as the detect, followed by an AP conjugated streptavidin.



ELISA of hIgGs shows recombinant Human IgG1 antibody only reacted to hIgG1. No cross reactivity with IgG2, IgG3, IgG4, IgE, IgD, IgA, or mouse/rat/goat IgG.



ELISA Titration: the plate was coated with different amounts of human IgG1. A serial dilution of recombinant Human IgG1 antibody was used as the primary and an alkaline phosphatase conjugated anti-rabbit IgG as the secondary.

All products are for RESEARCH USE ONLY. Not for diagnostic & therapeutic purposes!