

Recombinant Goat Anti-Rabbit IgG Fab Antibody

Catalog No: tcna4753



Available Sizes

Size: 50ug

Size: 100ug



Specifications

Application:

WB (non-reduced), ICC, IHC, FACS, ELISA

Species Reactivity:

Rabbit

Host Species:

Goat

Immunogen / Amino acids:

Rabbit IgG was used as the immunogen for this recombinant Rabbit IgG Fab antibody.

Conjugation:

Biotin Conjugate

Clonality:

Recombinant Goat Monoclonal

Clones:

RMG01

Isotype:

Goat IgG

Form:

Liquid

Storage Buffer:

1 mg/ml in PBS with 50% glycerol, 1% BSA and 0.09% sodium azide

Recommended Dilution:

ELISA: 0.01ug/ml - 0.5ug/ml

Immunocytochemistry: 0.5-2ug/ml

Immunohistochemistry (FFPE): 0.5-2ug/ml (1)

Western Blot (non-reduced): 0.1-0.5ug/ml The stated application concentrations are suggested starting points.

Titration of the recombinant Rabbit IgG Fab antibody may be required due to differences in protocols and secondary/substrate sensitivity.

1. A pH6 Citrate buffer or pH9 Tris/EDTA buffer HIER step is recommended for testing of FFPE tissue sections.

Storage Instruction:

Store the recombinant Rabbit IgG Fab antibody at -20oC (with glycerol) or aliquot and store at -20oC (without glycerol).

Gene ID:

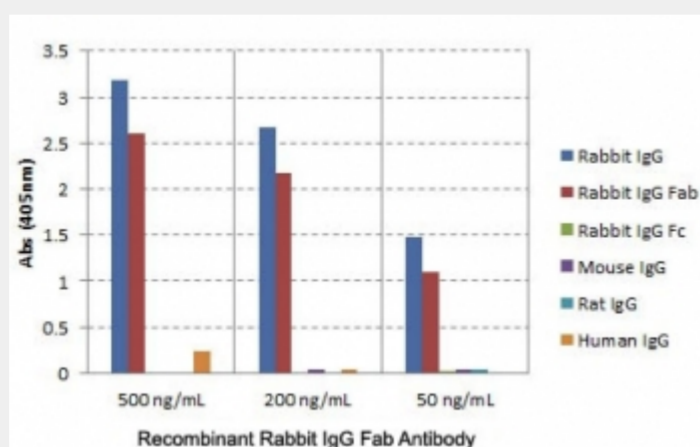
N/A (human);

References

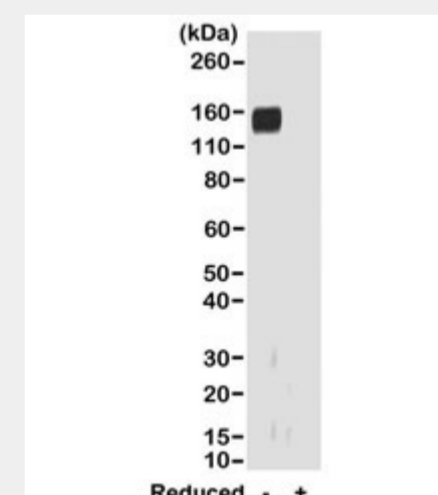
Biotin Conjugate

Product Description

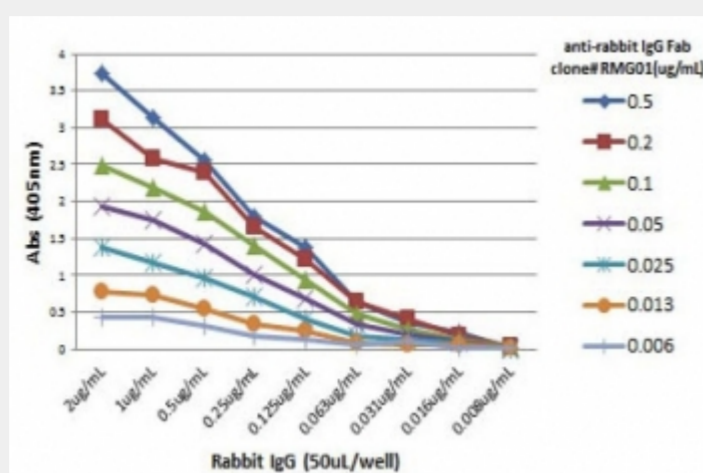
This recombinant Rabbit IgG Fab antibody reacts to the Fab region of Rabbit IgG. No cross reactivity with human IgG, rat IgG, or mouse IgG



ELISA of IgGs from different species shows the recombinant Rabbit IgG Fab antibody reacts to the Fab region of rabbit IgG; no cross reactivity with human IgG, rat IgG, or mouse IgG.



Western blot of nonreduced(-) and reduced(+) rabbit IgG (20ng/lane), using 0.2ug/ml of recombinant Rabbit IgG Fab antibody. This antibody reacts to nonreduced rabbit IgG (~150 kDa).



ELISA Titration: the plate was coated with different amounts of rabbit IgG. A serial dilution of the recombinant Rabbit IgG Fab antibody was used as the primary and an alkaline phosphatase conjugated anti-goat IgG as the secondary.

All products are for RESEARCH USE ONLY. Not for diagnostic & therapeutic purposes!