

Recombinant Rabbit Anti-Mouse IgG2b Antibody

Catalog No: tcna4748



Available Sizes

Size: 50ug

Size: 100ug



Specifications

Application:

WB, ICC, IHC, FACS, ELISA

Species Reactivity:

Mouse

Host Species:

Rabbit

Immunogen / Amino acids:

Mouse IgG2b was used as the immunogen for this recombinant Mouse IgG2b antibody.

Conjugation:

Biotin Conjugate

Clonality:

Recombinant Rabbit Monoclonal

Clones:

RM108

Isotype:

Rabbit IgG

Form:

Liquid

Storage Buffer:

1 mg/ml in PBS with 50% glycerol, 1% BSA and 0.09% sodium azide

Recommended Dilution:

ELISA: 0.005ug/ml - 0.2ug/ml

Immunocytochemistry: 0.5-2ug/ml

Immunohistochemistry (FFPE): 0.5-2ug/ml (1)

Western Blot (stronger on non-reduced samples): 0.1-0.5ug/ml The stated application concentrations are suggested starting points. Titration of the recombinant Mouse IgG2b antibody may be required due to differences in protocols and secondary/substrate sensitivity.

1. A pH6 Citrate buffer or pH9 Tris/EDTA buffer HIER step is recommended for testing of FFPE tissue sections.

Storage Instruction:

Store the recombinant Mouse IgG2b antibody at -20oC (with glycerol) or aliquot and store at -20oC (without glycerol).

SwissProt:

P01867

Gene ID:

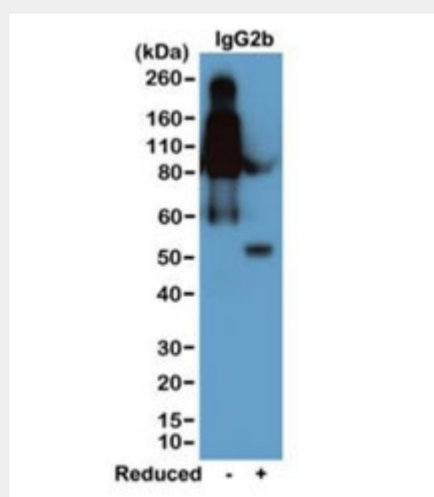
16016 (human);

References

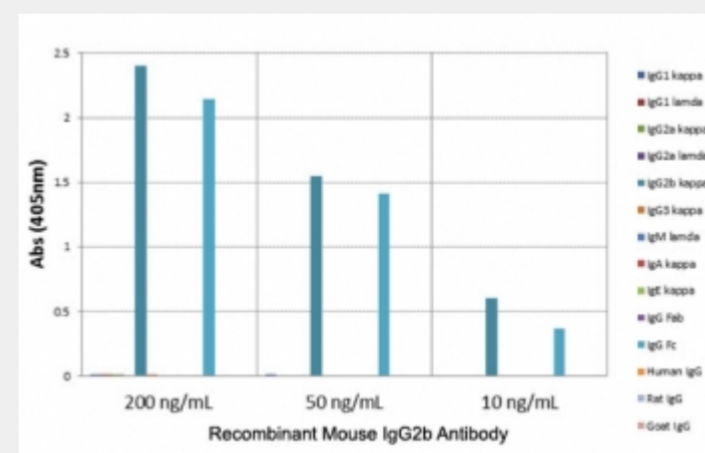
Biotin Conjugate

Product Description

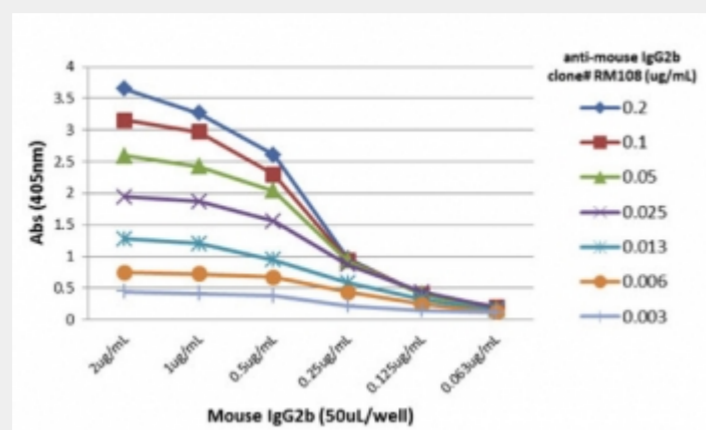
This recombinant Mouse IgG2b antibody reacts to the Fc region of mouse IgG2b. No cross reactivity with mouse IgG1, IgG2a, IgG3, IgM, IgA, IgE, human IgG, rat IgG, or goat IgG.



Western blot of nonreduced(-) and reduced(+) mouse IgG2b (20ng/lane), using 0.2ug/ml of the recombinant Mouse IgG2b antibody. This antibody reacts to nonreduced IgG2b (~150 kDa) much stronger than the reduced form (~50 kDa).



ELISA of mouse immunoglobulins shows the recombinant Mouse IgG2b antibody reacts to the Fc region of mouse IgG2b; no cross reactivity with IgG1, IgG2a, IgG3, IgM, IgA, IgE, human IgG, rat IgG, or goat IgG.



ELISA titer: the plate was coated with different amounts of mouse IgG2b. A serial dilution of recombinant Mouse IgG2b antibody was used as the primary and an alkaline phosphatase conjugated anti-rabbit IgG as the secondary.

All products are for RESEARCH USE ONLY. Not for diagnostic & therapeutic purposes!