

# Recombinant Rabbit Anti-Mouse IgG2a Antibody

Catalog No: tcna4747



## Available Sizes

---

**Size:** 50ug

**Size:** 100ug



## Specifications

---

**Application:**

WB (non-reduced only), ICC, IHC, FACS, ELISA

**Species Reactivity:**

Mouse

**Host Species:**

Rabbit

**Immunogen / Amino acids:**

Mouse IgG2a was used as the immunogen for this recombinant Mouse IgG2a antibody.

**Conjugation:**

Biotin Conjugate

**Clonality:**

Recombinant Rabbit Monoclonal

**Clones:**

RM219

**Isotype:**

Rabbit IgG

**Form:**

Liquid

**Storage Buffer:**

1 mg/ml in PBS with 50% glycerol, 1% BSA and 0.09% sodium azide

**Recommended Dilution:**

ELISA: 0.005ug/ml - 0.2ug/ml

Immunocytochemistry: 0.5-2ug/ml

Immunohistochemistry (FFPE): 0.5-2ug/ml (1)

Western Blot (non-reduced only): 0.5-2ug/ml The stated application concentrations are suggested starting points.

Titration of the recombinant Mouse IgG2a antibody may be required due to differences in protocols and secondary/substrate sensitivity.

1. A pH6 Citrate buffer or pH9 Tris/EDTA buffer HIER step is recommended for testing of FFPE tissue sections.

**Storage Instruction:**

Store the recombinant Mouse IgG2a antibody at -20oC (with glycerol) or aliquot and store at -20oC (without glycerol).

**SwissProt:**

P01863

**Gene ID:**

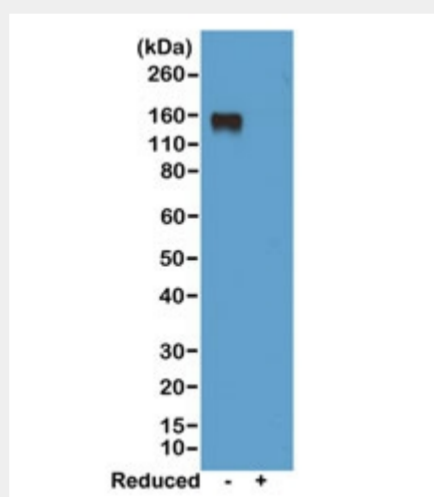
380793 (human);

**References**

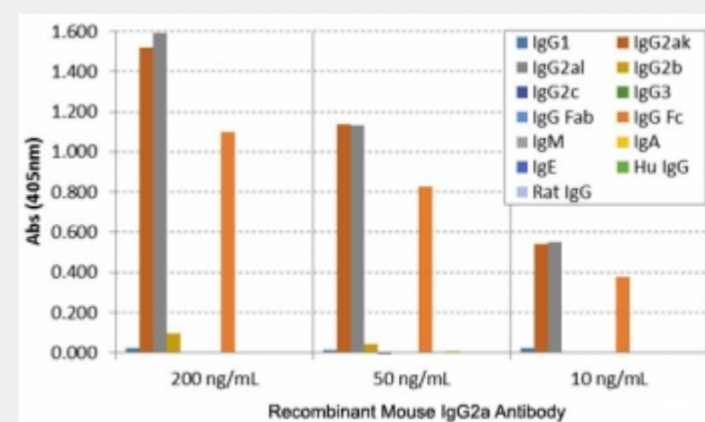
Biotin Conjugate

**Product Description**

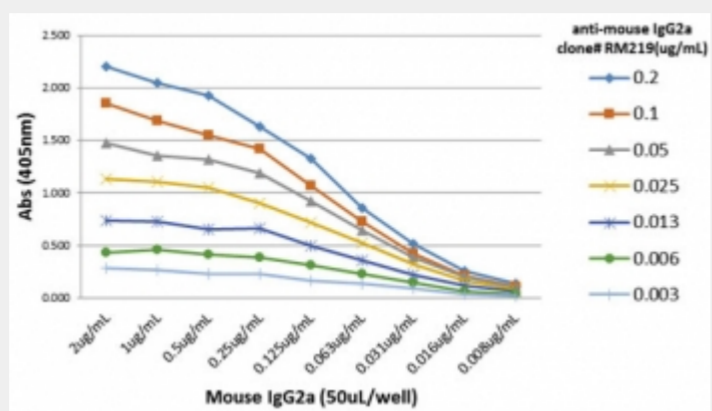
This recombinant Mouse IgG2a antibody reacts to the Fc region of mouse IgG2a. No cross reactivity with mouse IgG1, IgG2b, IgG2c, IgG3, IgM, IgA, IgE, human IgG, or rat IgG.



Western blot of nonreduced(-) and reduced(+) mouse IgG2a, using 0.5ug/ml of recombinant Mouse IgG2a antibody. This mAb reacts to nonreduced IgG2a (~150 kDa).



ELISA of mouse immunoglobulins shows the recombinant Mouse IgG2a antibody reacts to the Fc region of mouse IgG2a; no cross reactivity with IgG1, IgG2b, IgG2c, IgG3, IgM, IgA, IgE, human IgG, or rat IgG.



ELISA titer: the plate was coated with different amounts of mouse IgG2a. A serial dilution of recombinant Mouse IgG2a antibody was used as the primary and an alkaline phosphatase conjugated anti-rabbit IgG as the secondary.

All products are for RESEARCH USE ONLY. Not for diagnostic & therapeutic purposes!