

Recombinant Rabbit Anti-Mouse IgG2a-Kappa Antibody

Catalog No: tcna4746



Available Sizes

Size: 50ug

Size: 100ug



Specifications

Application:

WB (non-reduced only), ICC, IHC, FACS, ELISA

Species Reactivity:

Mouse

Host Species:

Rabbit

Immunogen / Amino acids:

Mouse IgG was used as the immunogen for this recombinant Mouse IgG2a-Kappa antibody.

Conjugation:

Biotin Conjugate

Clonality:

Recombinant Rabbit Monoclonal

Clones:

RM107

Isotype:

Rabbit IgG

Form:

Liquid

Storage Buffer:

1 mg/ml in PBS with 50% glycerol, 1% BSA and 0.09% sodium azide

Recommended Dilution:

ELISA: 0.005ug/ml - 0.2ug/ml

Immunocytochemistry: 0.5-2ug/ml

Immunohistochemistry (FFPE): 0.5-2ug/ml (1)

Western Blot (non-reduced only): 0.1-0.5ug/ml The stated application concentrations are suggested starting points.

Titration of the recombinant Mouse IgG2a-Kappa antibody may be required due to differences in protocols and secondary/substrate sensitivity.

1. A pH6 Citrate buffer or pH9 Tris/EDTA buffer HIER step is recommended for testing of FFPE tissue sections.

Storage Instruction:

Store the recombinant Mouse IgG2a-Kappa antibody at -20oC (with glycerol) or aliquot and store at -20oC (without glycerol).

SwissProt:

P01863

Gene ID:

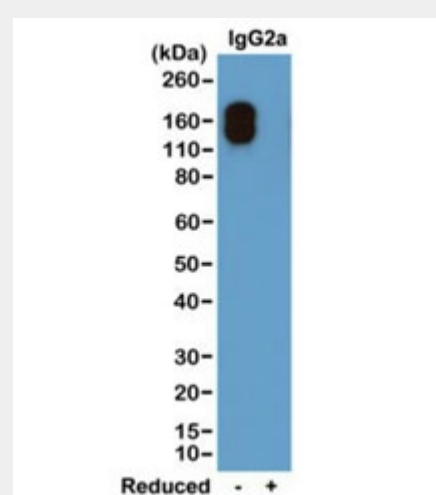
380793 (human);

References

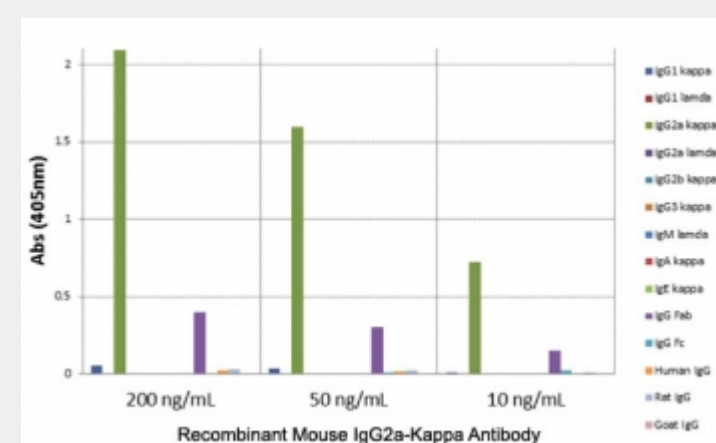
Biotin Conjugate

Product Description

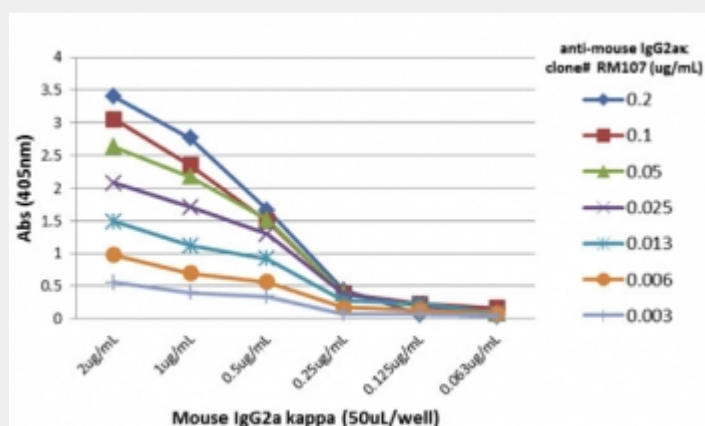
This recombinant Mouse IgG2a-Kappa antibody reacts to the Fab region of mouse IgG2ak. No cross reactivity with mouse IgG2al, IgG1, IgG3, IgM, IgA, IgE, human IgG, rat IgG, or goat IgG.



Western blot of nonreduced(-) and reduced(+) mouse IgG2a-, kappa (20 ng/lane), using 0.2ug/ml of recombinant Mouse IgG2a-Kappa antibody. This antibody only reacts to nonreduced Mouse IgG2a-, kappa.



ELISA of mouse immunoglobulins shows the recombinant Mouse IgG2a-Kappa antibody reacts to the Fab region of mouse IgG2a-, kappa; no cross reactivity with IgG2a-lambda, IgG1, IgG3, IgM, IgA, IgE, human IgG, rat IgG, or goat IgG.



A titer ELISA of mouse IgG2a, kappa. The plate was coated with different amounts of mouse IgG2a-, kappa. A serial dilution of recombinant Mouse IgG2a-Kappa antibody was used as the primary and an alkaline phosphatase conjugated anti-rabbit IgG as the secondary.

All products are for RESEARCH USE ONLY. Not for diagnostic & therapeutic purposes!