

# Recombinant Rabbit Anti-Mouse IgG1 Antibody- sodium azide free

Catalog No: tcna4745saf



## Available Sizes

---

**Size:** 100ug

---



## Specifications

---

**Application:**

WB, IP, ICC, IHC, FACS, ELISA

---

**Species Reactivity:**

Mouse

---

**Host Species:**

Rabbit

---

**Immunogen / Amino acids:**

Mouse IgG was used as the immunogen for this recombinant Mouse IgG1 antibody.

---

**Conjugation:**

Purified

---

**Clonality:**

Recombinant Rabbit Monoclonal

---

**Clones:**

RM106

---

**Isotype:**

Rabbit IgG

---

**Form:**

Liquid

---

**Storage Buffer:**

1 mg/ml in PBS without glycerol/BSA/sodium azide

---

### Recommended Dilution:

ELISA: 0.005-0.2ug/ml

Immunocytochemistry: 0.5-2ug/ml

Immunohistochemistry (FFPE): 0.5-2ug/ml (1)

Western Blot: 0.1-0.5ug/ml The stated application concentrations are suggested starting points. Titration of the recombinant Mouse IgG1 antibody may be required due to differences in protocols and secondary/substrate sensitivity.

1. A pH6 Citrate buffer or pH9 Tris/EDTA buffer HIER step is recommended for testing of FFPE tissue sections.

### Storage Instruction:

Store the recombinant Mouse IgG1 antibody at -20oC (with glycerol) or aliquot and store at -20oC (without glycerol).

### SwissProt:

P01868

### Gene ID:

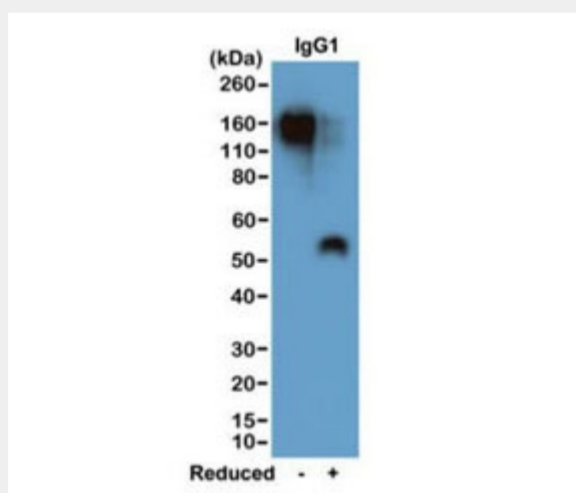
16017 (human);

### References

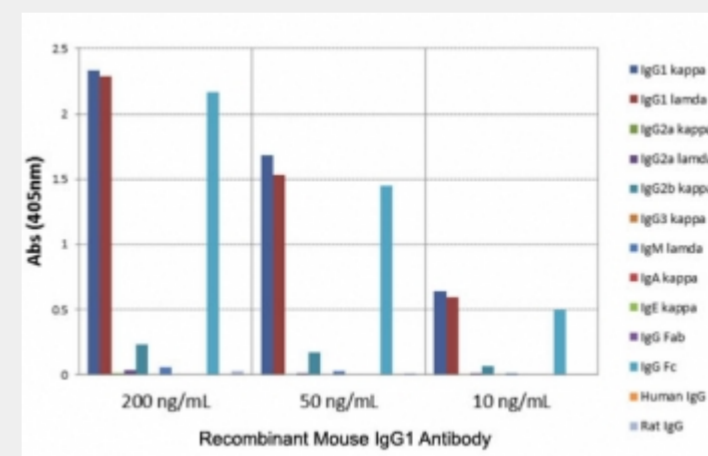
Purified

### Product Description

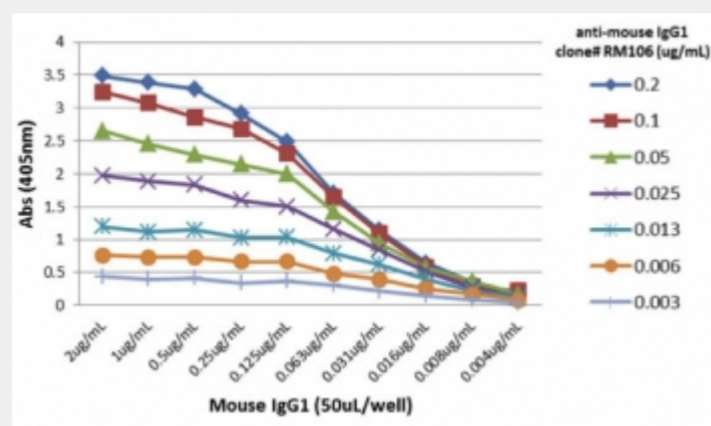
This recombinant Mouse IgG1 antibody reacts to the Fc region of mouse IgG1. No cross reactivity with IgG2a, IgG3, IgM, IgA, IgE, human IgG, or rat IgG. It may slightly cross react to mIgG2b, and may also react to goat IgG.



Western blot of nonreduced(-) and reduced(+) mouse IgG1 (20ng/lane), using 0.2ug/mL of recombinant Mouse IgG1 antibody. This mAb reacts to nonreduced IgG1 (~150 kDa) stronger than the reduced  $\gamma$ 1 form (~50 kDa).



ELISA of mouse immunoglobulins shows recombinant Mouse IgG1 antibody reacts to the Fc region of mIgG1; slightly cross reacts to IgG2b; no cross reactivity with IgG2a, IgG3, IgM, IgA, IgE, human/rat IgG.



ELISA titer: the plate was coated with different amount of mouse IgG1. A serial dilution of recombinant Mouse IgG1 antibody was used as the primary and an alkaline phosphatase conjugated anti-rabbit IgG as the secondary.

All products are for RESEARCH USE ONLY. Not for diagnostic & therapeutic purposes!