

Recombinant Rabbit Anti-Mouse IgG1 Antibody

Catalog No: tcna4745



Available Sizes

Size: 50ug

Size: 100ug



Specifications

Application:

WB, ICC, IHC, FACS, ELISA

Species Reactivity:

Mouse

Host Species:

Rabbit

Immunogen / Amino acids:

Mouse IgG was used as the immunogen for this recombinant Mouse IgG1 antibody.

Conjugation:

Biotin Conjugate

Clonality:

Recombinant Rabbit Monoclonal

Clones:

RM106

Isotype:

Rabbit IgG

Form:

Liquid

Storage Buffer:

1 mg/ml in PBS with 50% glycerol, 1% BSA and 0.09% sodium azide

Recommended Dilution:

ELISA: 0.005-0.2ug/ml

Immunocytochemistry: 0.5-2ug/ml

Immunohistochemistry (FFPE): 0.5-2ug/ml (1)

Western Blot: 0.1-0.5ug/ml The stated application concentrations are suggested starting points. Titration of the recombinant Mouse IgG1 antibody may be required due to differences in protocols and secondary/substrate sensitivity.

1. A pH6 Citrate buffer or pH9 Tris/EDTA buffer HIER step is recommended for testing of FFPE tissue sections.

Storage Instruction:

Store the recombinant Mouse IgG1 antibody at -20oC (with glycerol) or aliquot and store at -20oC (without glycerol).

SwissProt:

P01868

Gene ID:

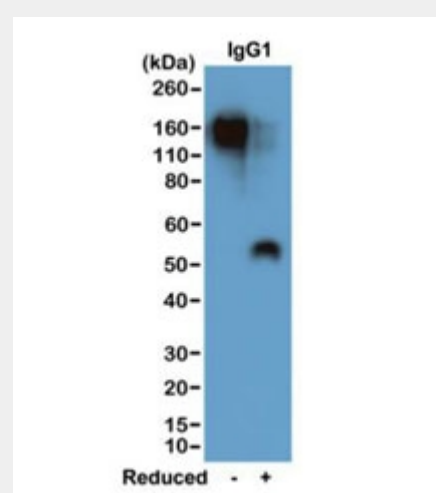
16017 (human);

References

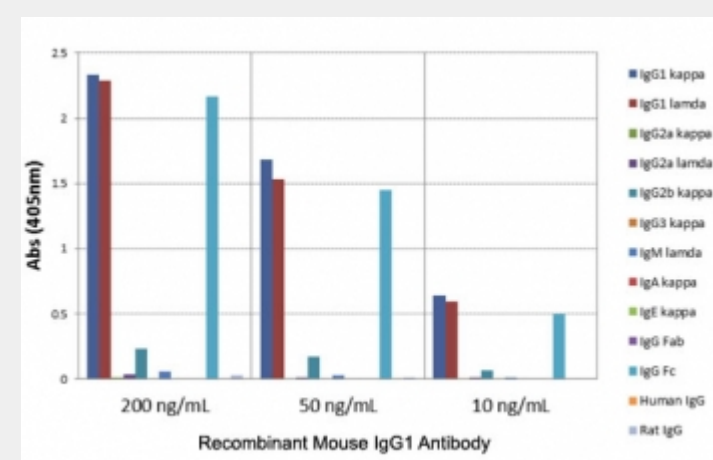
Biotin Conjugate

Product Description

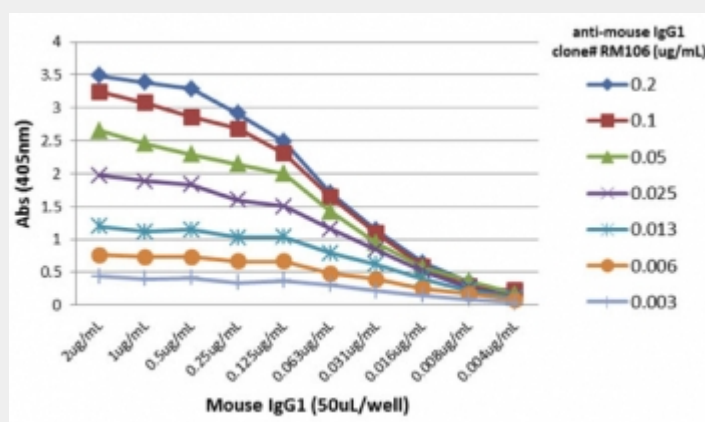
This recombinant Mouse IgG1 antibody reacts to the Fc region of mouse IgG1. No cross reactivity with mouse IgG2a, IgG3, IgM, IgA, IgE, human IgG, or rat IgG. It may slightly cross react to mouse IgG2b, and may also react to goat IgG.



Western blot of nonreduced(-) and reduced(+) mouse IgG1 (20ng/lane), using 0.2ug/mL of recombinant Mouse IgG1 antibody. This mAb reacts to nonreduced IgG1 (~150 kDa) stronger than the reduced γ 1 form (~50 kDa).



ELISA of mouse immunoglobulins shows recombinant Mouse IgG1 antibody reacts to the Fc region of mouse IgG1; slightly cross reacts to IgG2b; no cross reactivity with IgG2a, IgG3, IgM, IgA, IgE, human IgG, or rat IgG.



ELISA titer: the plate was coated with different amount of mouse IgG1. A serial dilution of recombinant Mouse IgG1 antibody was used as the primary and an alkaline phosphatase conjugated anti-rabbit IgG as the secondary.

All products are for RESEARCH USE ONLY. Not for diagnostic & therapeutic purposes!