

# Recombinant Rabbit Anti-Mouse IgG Antibody- sodium azide free

Catalog No: tcna4744saf



## Available Sizes

---

**Size:** 100ug



## Specifications

---

**Application:**

WB (non-reduced), IP, ICC, IHC, FACS, ELISA

**Species Reactivity:**

Mouse

**Host Species:**

Rabbit

**Immunogen / Amino acids:**

Mouse IgG was used as the immunogen for this recombinant Mouse IgG antibody.

**Conjugation:**

Purified

**Clonality:**

Recombinant Rabbit Monoclonal

**Clones:**

RM104

**Isotype:**

Rabbit IgG

**Form:**

Liquid

**Storage Buffer:**

1 mg/ml in PBS without glycerol/BSA/sodium azide

### Recommended Dilution:

ELISA: 0.005-0.2ug/ml

Immunocytochemistry: 0.5-2ug/ml

Immunohistochemistry (FFPE): 0.5-2ug/ml (1)

Western Blot (non-reduced): 0.1-0.5ug/ml The stated application concentrations are suggested starting points.

Titration of the recombinant Mouse IgG antibody may be required due to differences in protocols and secondary/substrate sensitivity.

1. A pH6 Citrate buffer or pH9 Tris/EDTA buffer HIER step is recommended for testing of FFPE tissue sections.

### Storage Instruction:

Store the recombinant Mouse IgG antibody at -20oC (with glycerol) or aliquot and store at -20oC (without glycerol).

### SwissProt:

P01868

### Gene ID:

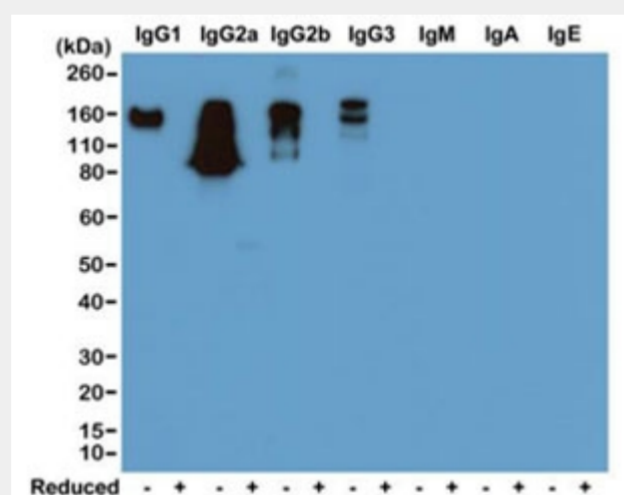
16017 (human);

### References

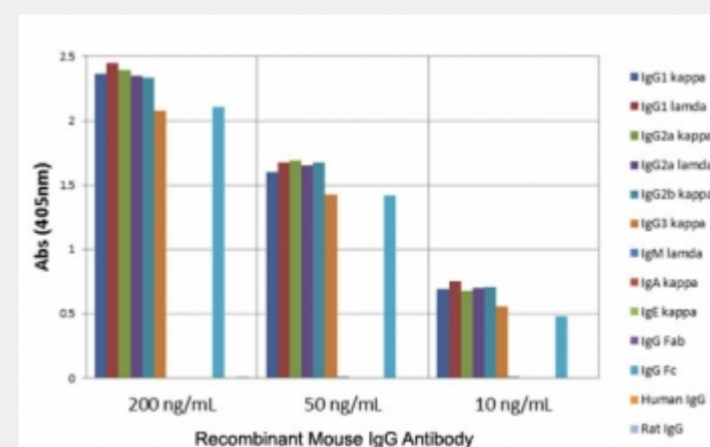
Purified

### Product Description

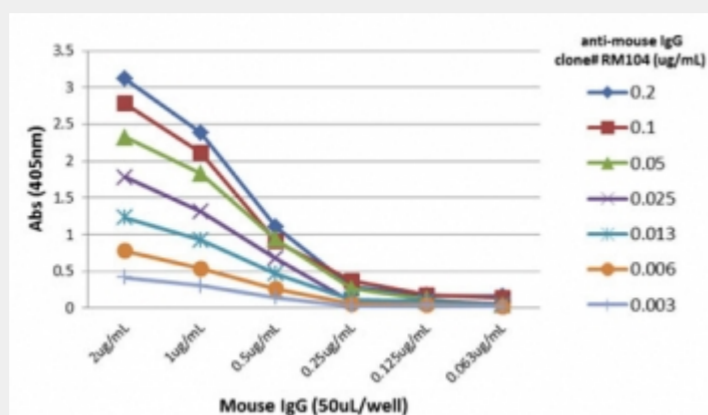
This recombinant Mouse IgG antibody reacts to the Fc region of all subclasses of mouse IgG. No cross reactivity with mouse IgM, IgA, IgE, human/rat IgG. It may cross react to goat IgG.



Western blot of nonreduced(-) and reduced(+) mouse immunoglobulins (20ng/lane), using 0.2ug/ml of recombinant Mouse IgG antibody. This mAb reacts to nonreduced mouse IgG1, IgG2a, IgG2b, and IgG3. It showed no cross reactivity with IgM, IgA, or IgE.



ELISA of mouse immunoglobulins shows the recombinant Mouse IgG antibody reacts to the Fc region of mIgG1, mIgG2a, mIgG2b, and mIgG3; no cross reactivity with IgM, IgA, IgE, human/rat IgG.



ELISA titer: the plate was coated with different amounts of mouse IgG. A serial dilution of recombinant Mouse IgG antibody was used as the primary and an alkaline phosphatase conjugated anti-rabbit IgG as the secondary.

All products are for RESEARCH USE ONLY. Not for diagnostic & therapeutic purposes!