

# Rabbit Anti-Human IgG Heavy Chain Antibody- prediluted

Catalog No: tcna1486pre



## Available Sizes

---

**Size:** 7ml

---



## Specifications

---

**Application:**

IHC-P

---

**Species Reactivity:**

Human. Other species not tested.

---

**Host Species:**

Rabbit

---

**Immunogen / Amino acids:**

Human Ig Gamma Chain was used as the immunogen for this recombinant IgG antibody.

---

**Conjugation:**

Unconjugated

---

**Clonality:**

Recombinant Rabbit Monoclonal

---

**Clones:**

GHC07-2R

---

**Isotype:**

Rabbit IgG, kappa

---

**Form:**

Liquid

---

**Storage Buffer:**

Prediluted in 1X PBS with 0.1 mg/ml BSA (US sourced) and 0.05% sodium azide; \*For IHC use only\*

---

### Recommended Dilution:

Prediluted IHC only format : incubate for 30 min at RT (1)The stated application concentrations are suggested starting points. Titration of the recombinant IgG antibody may be required due to differences in protocols and secondary/substrate sensitivity.

1. The prediluted format is supplied in a dropper bottle and is optimized for use in IHC. After epitope retrieval step (if required)  
drip mAb solution onto the tissue section and incubate at RT for 30 min.

### Storage Instruction:

Store the recombinant IgG antibody at 2-8oC (with azide) or aliquot and store at -20oC or colder (without azide).

### SwissProt:

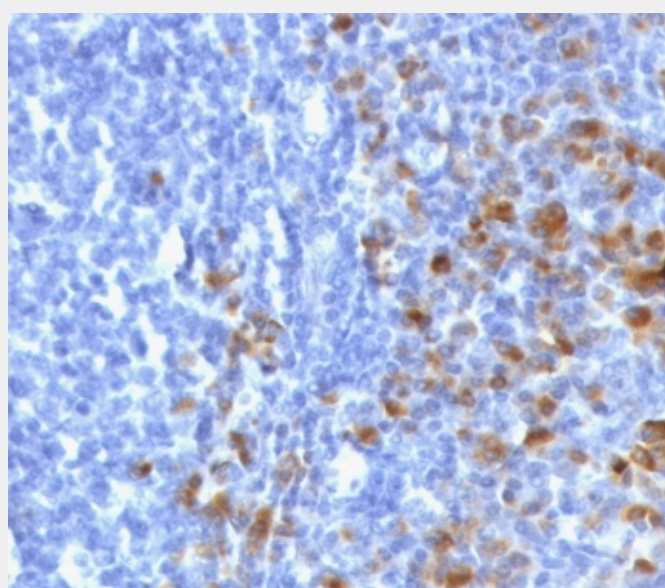
P01857

### References

Protein A affinity chromatography

### Product Description

This antibody reacts with all sub-classes of gamma chain of human immunoglobulins. It does not cross-react with alpha (IgA), mu (IgM), epsilon (IgE), or delta (IgD), heavy chains, T-cells, monocytes, granulocytes, or erythrocytes. It is useful in the identification of leukemias, plasmacytomas, and certain non-Hodgkin's lymphomas. The most common feature of these malignancies is the restricted expression of a single heavy chain class. Demonstration of clonality in lymphoid infiltrates indicates that the infiltrate is clonal and therefore malignant.



IHC staining of FFPE human tonsil tissue with recombinant IgG antibody (clone GHC07-2R). Required HIER: boil tissue sections in 10mM citrate buffer, pH6, for 10-20 min followed by cooling at RT for 20 min.

All products are for RESEARCH USE ONLY. Not for diagnostic & therapeutic purposes!