

Mouse Anti-Human IgG Heavy Chain Antibody- prediluted

Catalog No: tcna1381pre



Available Sizes

Size: 7ml



Specifications

Application:

IHC-P

Species Reactivity:

Human. Other species not known.

Host Species:

Mouse

Immunogen / Amino acids:

Human Ig Gamma Chain was used as the immunogen for this recombinant human IgG antibody.

Conjugation:

Unconjugated

Clonality:

Recombinant Mouse Monoclonal

Clones:

rIG266

Isotype:

Mouse IgG1, kappa

Form:

Liquid

Storage Buffer:

Prediluted in 1X PBS with 0.1 mg/ml BSA (US sourced) and 0.05% sodium azide; *For IHC use only*

Recommended Dilution:

Prediluted IHC only format : incubate for 30 min at RT (1)The optimal dilution of the recombinant human IgG antibody for each application should be determined by the researcher.

1. The prediluted format is supplied in a dropper bottle and is optimized for use in IHC. After epitope retrieval step (if required) drip mAb solution onto the tissue section and incubate at RT for 30 min.

Storage Instruction:

Store the recombinant human IgG antibody at 2-8oC (with azide) or aliquot and store at -20oC or colder (without azide).

SwissProt:

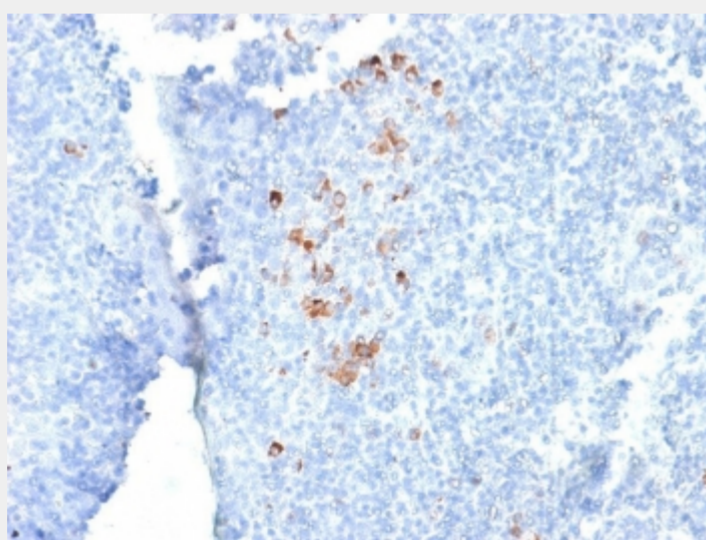
P01857

References

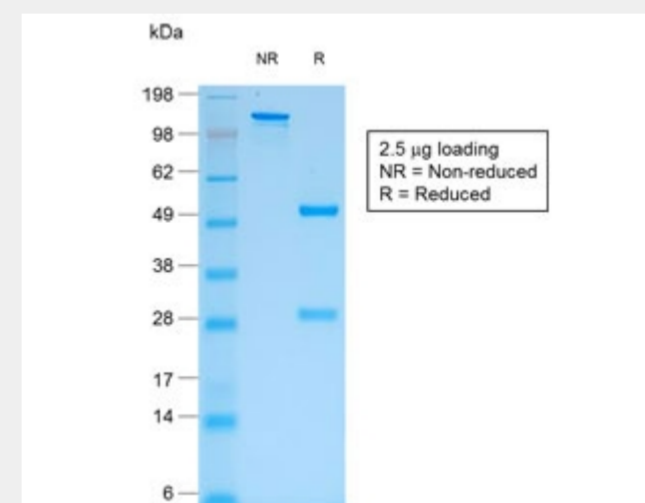
Protein G affinity chromatography

Product Description

Recognizes a protein of 75kDa, identified as gamma heavy chain of human immunoglobulins. It reacts with all sub-classes of gamma chain of human immunoglobulins. It does not cross-react with alpha (IgA), mu (IgM), epsilon (IgE), or delta (IgD), heavy chains, T-cells, monocytes, granulocytes, or erythrocytes. This mAb is useful in the identification of leukemias, plasmacytomas, and certain non-Hodgkin's lymphomas. The most common feature of these malignancies is the restricted expression of a single heavy chain class. Demonstration of clonality in lymphoid infiltrates indicates that the infiltrate is clonal and therefore malignant.



IHC testing of FFPE human tonsil with recombinant human IgG antibody (clone rIG266). Required HIER: boil tissue sections in 10mM citrate buffer, pH 6, for 10-20 min followed by cooling at RT for 20 min.



SDS-PAGE analysis of purified, BSA-free recombinant human IgG antibody (clone rIG266) as confirmation of integrity and purity.

All products are for RESEARCH USE ONLY. Not for diagnostic & therapeutic purposes!