

# Recombinant Rabbit Anti-Human IgG Heavy Chain Antibody- sodium azide free

Catalog No: tcna1276saf



## Available Sizes

---

**Size:** 100ug

---



## Specifications

---

**Application:**

FACS, IF, IHC-P

---

**Species Reactivity:**

Human. Other species not known.

---

**Host Species:**

Rabbit

---

**Immunogen / Amino acids:**

Human Ig Gamma Chain was used as the immunogen for this recombinant IgG antibody.

---

**Conjugation:**

Unconjugated

---

**Clonality:**

Recombinant Rabbit Monoclonal

---

**Clones:**

IG1707R

---

**Isotype:**

Rabbit IgG, kappa

---

**Form:**

Liquid

---

**Storage Buffer:**

1 mg/ml in 1X PBS; BSA free, sodium azide free

---

**Concentration:**

1 mg/ml

**Recommended Dilution:**

Flow Cytometry: 0.5-1ug/million cells in 0.1ml

Immunofluorescence: 0.5-1ug/ml

Immunohistochemistry (FFPE): 0.5-1ug/ml for 30 min at RT

The optimal dilution of the recombinant IgG antibody for each application should be determined by the researcher.

**Storage Instruction:**

Store the recombinant IgG antibody at 2-8oC (with azide) or aliquot and store at -20oC or colder (without azide).

**SwissProt:**

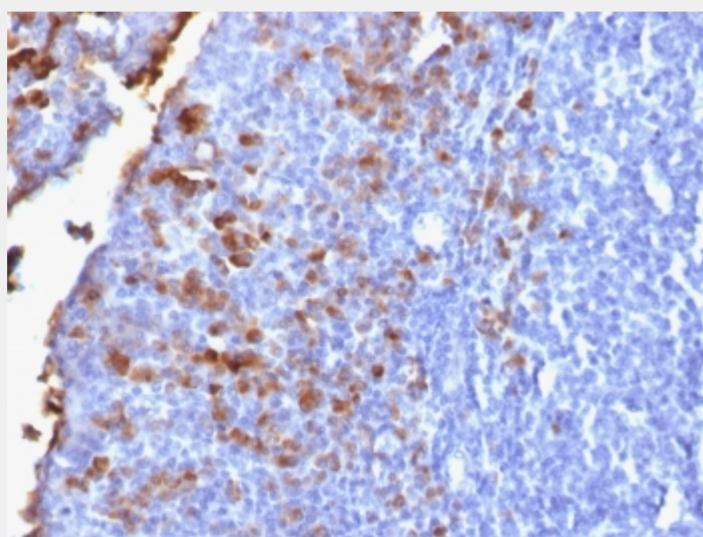
P01857

**References**

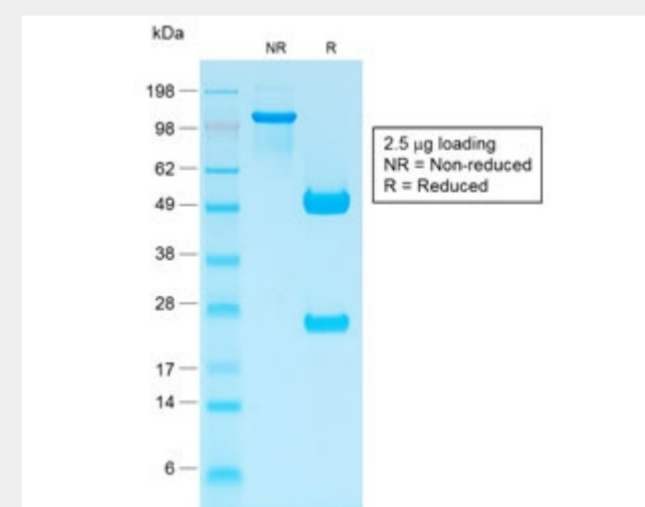
Protein A affinity chromatography

**Product Description**

Recognizes a protein of 75kDa, identified as gamma heavy chain of human immunoglobulins. It reacts with all sub-classes of gamma chain of human immunoglobulins. It does not cross-react with alpha (IgA), mu (IgM), epsilon (IgE), or delta (IgD), heavy chains, T-cells, monocytes, granulocytes, or erythrocytes. This mAb is useful in the identification of leukemias, plasmacytomas, and certain non-Hodgkin's lymphomas. The most common feature of these malignancies is the restricted expression of a single heavy chain class. Demonstration of clonality in lymphoid infiltrates indicates that the infiltrate is clonal and therefore malignant.



IHC testing of FFPE human tonsil with recombinant IgG antibody (clone IG1707R).  
Required HIER: boil tissue sections in 10mM citrate buffer, pH 6, for 10-20 min followed by cooling at RT for 20 min.



SDS-PAGE analysis of purified, BSA-free recombinant IgG antibody (clone IG1707R) as confirmation of integrity and purity.

All products are for RESEARCH USE ONLY. Not for diagnostic & therapeutic purposes!