

Mouse Anti-Human IgG Antibody- prediluted

Catalog No: tcna1003pre



Available Sizes

Size: 7ml



Specifications

Application:

IHC-P

Species Reactivity:

Human. Other species not known.

Host Species:

Mouse

Immunogen / Amino acids:

Purified human IgG was used as the immunogen for this IgG antibody.

Conjugation:

Unconjugated

Clonality:

Monoclonal

Clones:

IG217 + IG266

Isotype:

Mouse IgG1 + IgG2a

Form:

Liquid

Storage Buffer:

Prediluted in 1X PBS with 0.1 mg/ml BSA (US sourced) and 0.05% sodium azide; *For IHC use only*

Recommended Dilution:

Prediluted IHC only format : incubate for 30 min at RT (2)The optimal dilution of the IgG antibody for each application should be determined by the researcher.

1. Staining of formalin-fixed tissues requires boiling tissue sections in 10mM citrate buffer pH 6.0

for 10-20 min followed by cooling at RT for 20 minutes.

2. The prediluted format is supplied in a dropper bottle and is optimized for use in IHC. After epitope retrieval step (if required)

drip mAb solution onto the tissue section and incubate at RT for 30 min.

Storage Instruction:

Store the IgG antibody cocktail at 2-8oC (with azide) or aliquot and store at -20oC or colder (without azide).

SwissProt:

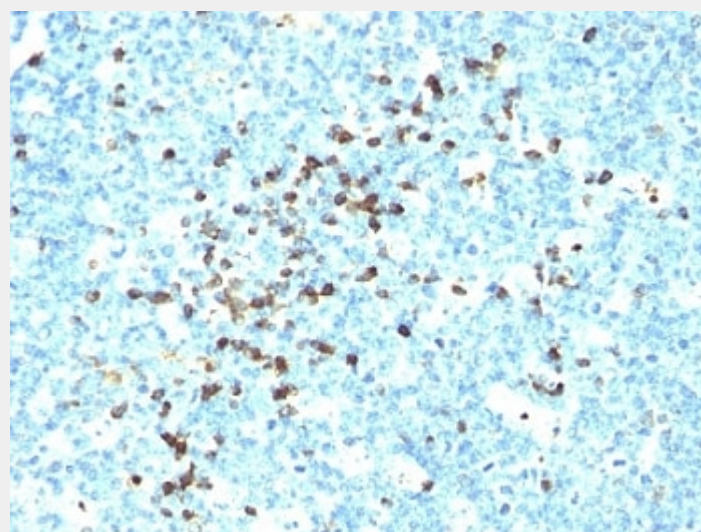
P01857, P01859, P01860, P01861

References

Protein G affinity chromatography

Product Description

This mAb is specific to heavy chain of IgG and shows minimal cross-reaction with heavy chains of other immunoglobulins. It is reactive with all subclasses of gamma heavy chain (IgG1, IgG2a, IgG2b, IgG3). The most common feature of plasmacytomas, and certain non-Hodgkin's lymphomas is the restricted expression of a single heavy chain class. Demonstration of clonality in lymphoid infiltrates indicates that the infiltrate is clonal and therefore malignant. Ab-3 is superb for staining of formalin-fixed tissues.



Formalin-fixed, paraffin-embedded human tonsil stained with IgG antibody (IG217 + IG266)

All products are for RESEARCH USE ONLY. Not for diagnostic & therapeutic purposes!