

# Mouse Anti-Human IgG Antibody Cocktail

Catalog No: tcna1003



## Available Sizes

**Size:** 20ug

**Size:** 100ug



## Specifications

**Application:**

FACS, IF, IHC-P

**Species Reactivity:**

Human. Other species not known.

**Host Species:**

Mouse

**Immunogen / Amino acids:**

Purified human IgG was used as the immunogen for this IgG antibody.

**Conjugation:**

Unconjugated

**Clonality:**

Monoclonal

**Clones:**

IG217 + IG266

**Isotype:**

Mouse IgG1 + IgG2a

**Form:**

Liquid

**Storage Buffer:**

0.2 mg/ml in 1X PBS with 0.1 mg/ml BSA (US sourced) and 0.05% sodium azide

---

**Recommended Dilution:**

Flow Cytometry (1ug/million cells in 0.1ml)

Immunofluorescence: 0.5-1ug/ml

Immunohistochemistry (FFPE): 0.5-1ug/ml for 30 minutes at RT (1)

Prediluted format : incubate for 30 min at RT (2)The optimal dilution of the IgG antibody for each application should be determined by the researcher.

1. Staining of formalin-fixed tissues requires boiling tissue sections in 10mM citrate buffer pH 6.0

for 10-20 min followed by cooling at RT for 20 minutes.

2. The prediluted format is supplied in a dropper bottle and is optimized for use in IHC. After epitope retrieval step (if required)

drip mAb solution onto the tissue section and incubate at RT for 30 min.

---

**Storage Instruction:**

Store the IgG antibody cocktail at 2-8oC (with azide) or aliquot and store at -20oC or colder (without azide).

---

**SwissProt:**

P01857, P01859, P01860, P01861

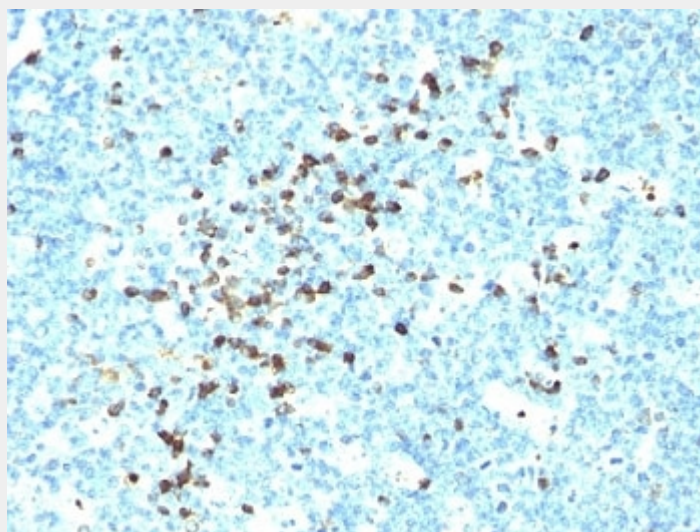
---

**References**

Protein G affinity chromatography

**Product Description**

This mAb is specific to heavy chain of IgG and shows minimal cross-reaction with heavy chains of other immunoglobulins. It is reactive with all subclasses of gamma heavy chain (IgG1, IgG2a, IgG2b, IgG3). The most common feature of plasmacytomas, and certain non-Hodgkin's lymphomas is the restricted expression of a single heavy chain class. Demonstration of clonality in lymphoid infiltrates indicates that the infiltrate is clonal and therefore malignant. Ab-3 is superb for staining of formalin-fixed tissues.



Formalin-fixed, paraffin-embedded human tonsil stained with IgG antibody (IG217 + IG266)

All products are for RESEARCH USE ONLY. Not for diagnostic & therapeutic purposes!