

# Mouse Anti-Human IgG Antibody- prediluted

Catalog No: tcna1000pre



## Available Sizes

---

**Size:** 7ml



## Specifications

---

**Application:**

IHC-P

**Species Reactivity:**

Human. Other species not known.

**Host Species:**

Mouse

**Immunogen / Amino acids:**

Purified human Ig Gamma Chain was used as the immunogen for this IgG antibody.

**Conjugation:**

Unconjugated

**Clonality:**

Monoclonal

**Clones:**

IG217

**Isotype:**

Mouse IgG1, kappa

**Form:**

Liquid

**Storage Buffer:**

Prediluted in 1X PBS with 0.1 mg/ml BSA (US sourced) and 0.05% sodium azide; \*For IHC use only\*

### Recommended Dilution:

Prediluted IHC only format : incubate for 30 min at RT (2)The optimal dilution of the IgG antibody for each application should be determined by the researcher.

1. Staining of formalin-fixed tissues requires boiling tissue sections in 10mM citrate buffer pH 6.0

for 10-20 min followed by cooling at RT for 20 minutes.

2. The prediluted format is supplied in a dropper bottle and is optimized for use in IHC. After epitope retrieval step (if required)

drip mAb solution onto the tissue section and incubate at RT for 30 min.

### Storage Instruction:

Store the IgG antibody at 2-8oC (with azide) or aliquot and store at -20oC or colder (without azide).

### SwissProt:

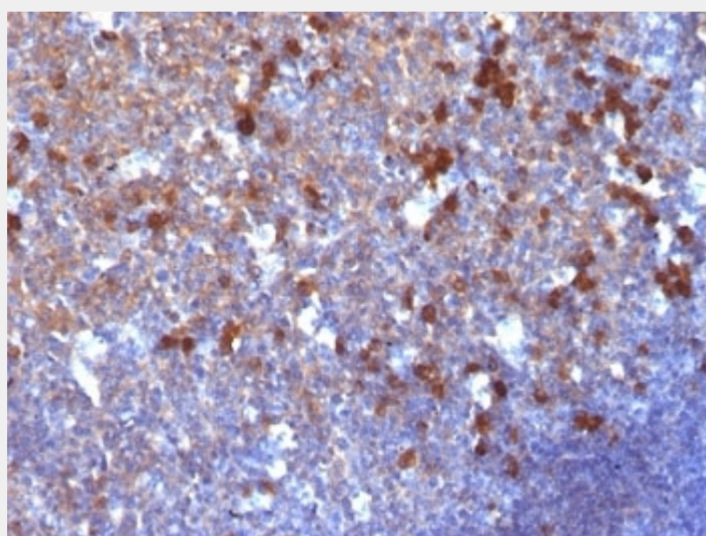
P01857, P01859, P01860, P01861

### References

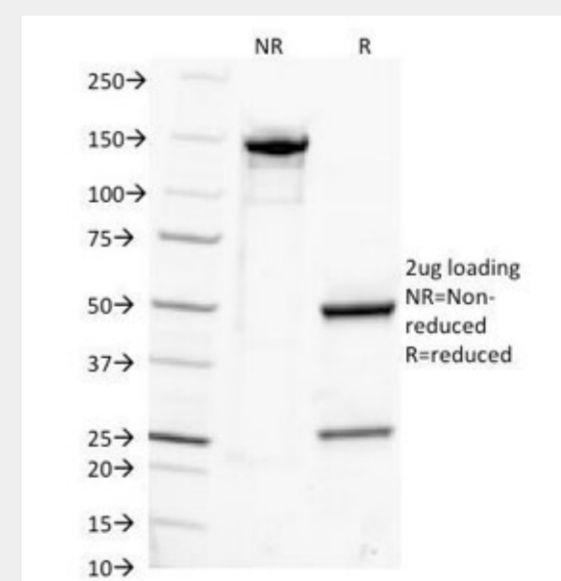
Protein G affinity chromatography

### Product Description

Recognizes a protein of 75kDa, identified as gamma heavy chain of human immunoglobulins. It reacts with all sub-classes of gamma chain of human immunoglobulins. It does not cross-react with alpha (IgA), mu (IgM), epsilon (IgE), or delta (IgD), heavy chains, T-cells, monocytes, granulocytes, or erythrocytes. This mAb is useful in the identification of leukemias, plasmacytomas, and certain non-Hodgkin's lymphomas. The most common feature of these malignancies is the restricted expression of a single heavy chain class. Demonstration of clonality in lymphoid infiltrates indicates that the infiltrate is clonal and therefore malignant.



Formalin-fixed, paraffin-embedded human tonsil stained with IgG antibody (IG217)



SDS-PAGE Analysis of Purified, BSA-Free IgG Antibody (clone IG217). Confirmation of Integrity and Purity of the Antibody.

All products are for RESEARCH USE ONLY. Not for diagnostic & therapeutic purposes!