

Mouse Anti-Human IgG Antibody

Catalog No: tcna1000



Available Sizes

Size: 20ug

Size: 100ug



Specifications

Application:

FACS, IF, IHC-P

Species Reactivity:

Human. Other species not known.

Host Species:

Mouse

Immunogen / Amino acids:

Purified human Ig Gamma Chain was used as the immunogen for this IgG antibody.

Conjugation:

Unconjugated

Clonality:

Monoclonal

Clones:

IG217

Isotype:

Mouse IgG1, kappa

Form:

Liquid

Storage Buffer:

0.2 mg/ml in 1X PBS with 0.1 mg/ml BSA (US sourced) and 0.05% sodium azide

Recommended Dilution:

Flow Cytometry: 0.5-1ug/million cells in 0.1ml

Immunofluorescence: 0.5-1ug/ml

Immunohistochemistry (Formalin/paraffin) 0.5-1ug/ml for 30 minutes at RT (1)

Prediluted format : incubate for 30 min at RT (2)The optimal dilution of the IgG antibody for each application should be determined by the researcher.

1. Staining of formalin-fixed tissues requires boiling tissue sections in 10mM citrate buffer pH 6.0

for 10-20 min followed by cooling at RT for 20 minutes.

2. The prediluted format is supplied in a dropper bottle and is optimized for use in IHC. After epitope retrieval step (if required)

drip mAb solution onto the tissue section and incubate at RT for 30 min.

Storage Instruction:

Store the IgG antibody at 2-8oC (with azide) or aliquot and store at -20oC or colder (without azide).

SwissProt:

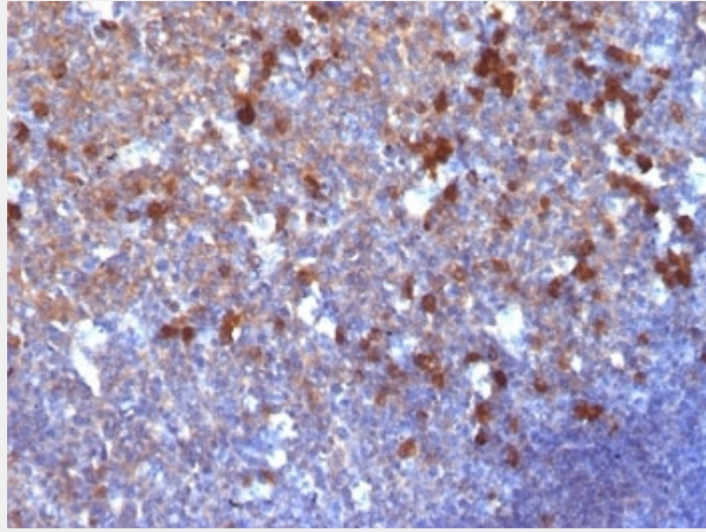
P01857, P01859, P01860, P01861

References

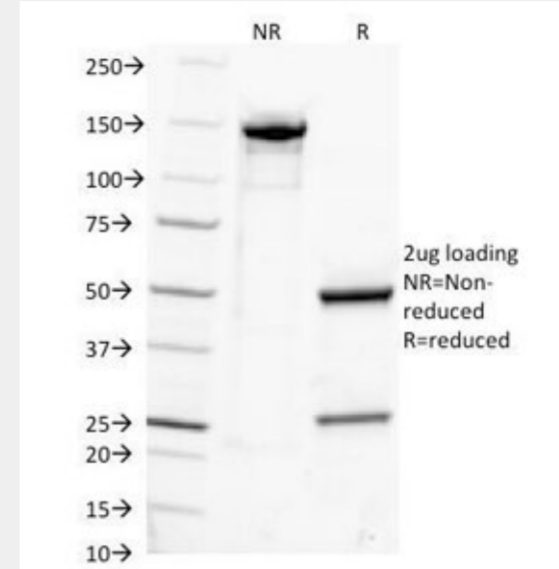
Protein G affinity chromatography

Product Description

Recognizes a protein of 75kDa, identified as gamma heavy chain of human immunoglobulins. It reacts with all sub-classes of gamma chain of human immunoglobulins. It does not cross-react with alpha (IgA), mu (IgM), epsilon (IgE), or delta (IgD), heavy chains, T-cells, monocytes, granulocytes, or erythrocytes. This mAb is useful in the identification of leukemias, plasmacytomas, and certain non-Hodgkin's lymphomas. The most common feature of these malignancies is the restricted expression of a single heavy chain class. Demonstration of clonality in lymphoid infiltrates indicates that the infiltrate is clonal and therefore malignant.



Formalin-fixed, paraffin-embedded human tonsil stained with IgG antibody (IG217)



SDS-PAGE Analysis of Purified, BSA-Free IgG Antibody (clone IG217). Confirmation of Integrity and Purity of the Antibody.

All products are for RESEARCH USE ONLY. Not for diagnostic & therapeutic purposes!