

# Rabbit Anti-IgG Isotype Control PE conjugated Polyclonal Antibody

Catalog No: tcna1pe



## Available Sizes

**Size:** 25ug

**Size:** 100ug



## Specifications

**Application:**

FACS, IHC, IF

**Host Species:**

Rabbit

**Immunogen / Amino acids:**

This is purified naive rabbit sera and as such there was no immunogen.

**Conjugation:**

PE

**Clonality:**

Polyclonal

**Isotype:**

Rabbit IgG

**Form:**

Liquid

**Storage Buffer:**

0.5 mg/ml in 1X PBS with 0.05% sodium azide

**Concentration:**

0.5 mg/ml

### Recommended Dilution:

FACS: assay dependent

IHC: assay dependent

IF: assay dependent Generally to be used at the same concentration as the sample being controlled for.

### Storage Instruction:

Store the Rabbit IgG isotype control antibody at 4°C. Do not freeze; protect from light.

### SwissProt:

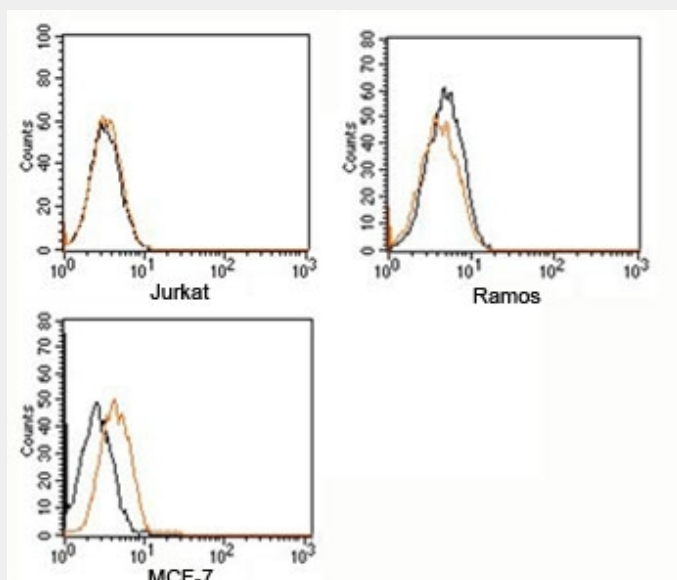
Not Applicable

## References

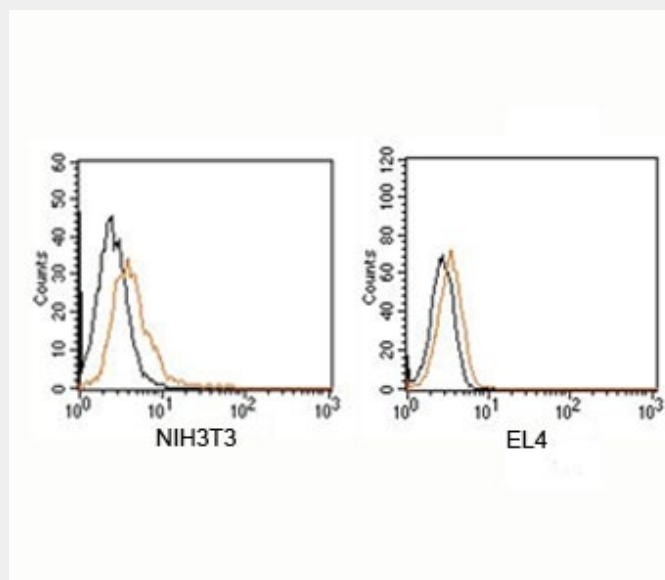
Protein A Affinity Chromatography

## Product Description

Isotype control antibodies are negative controls used to measure non-specific binding or background levels of a primary antibody in different cell types. They are not specific to any target in a cell, yet retain all non-specific characteristics of the antibodies they control.



FACS testing of Rabbit IgG isotype control antibody PE conjugate on human samples. Black=cells alone, orange= isotype control antibody



FACS testing of Rabbit IgG isotype control antibody PE conjugate on mouse samples. Black=cells alone, orange= isotype control antibody

All products are for RESEARCH USE ONLY. Not for diagnostic & therapeutic purposes!