

Rabbit IgG Isotype Control Polyclonal Antibody FITC Conjugate

Catalog No: tcna1fitc



Available Sizes

Size: 25ug

Size: 100ug



Specifications

Application:

FACS, IHC, IF

Host Species:

Rabbit

Immunogen / Amino acids:

This is purified naive rabbit sera and as such there was no immunogen.

Conjugation:

FITC

Clonality:

Polyclonal

Isotype:

Rabbit IgG

Form:

Liquid

Storage Buffer:

0.5 mg/ml in 1X PBS with 0.05% sodium azide

Concentration:

0.5 mg/ml

Recommended Dilution:

FACS: assay dependent

IHC: assay dependent

IF: assay dependent Generally to be used at the same concentration as the sample being controlled for.

Storage Instruction:

Store the Rabbit IgG isotype control antibody at 4oC. Do not freeze; protect from light.

SwissProt:

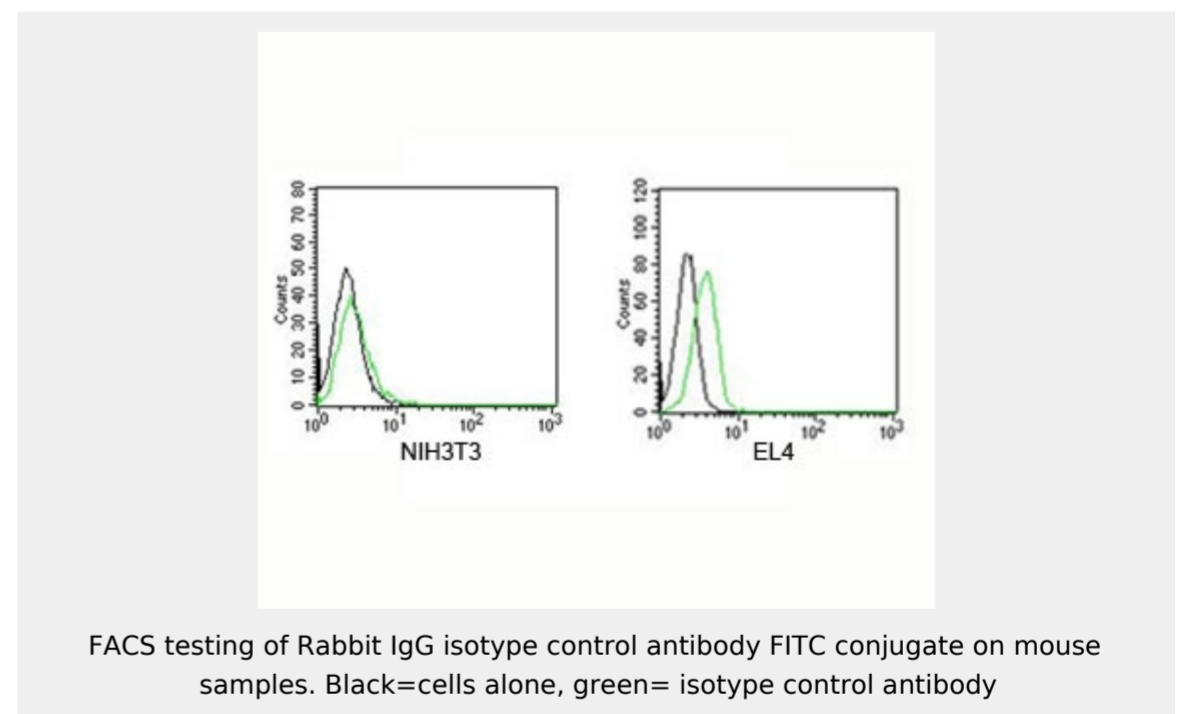
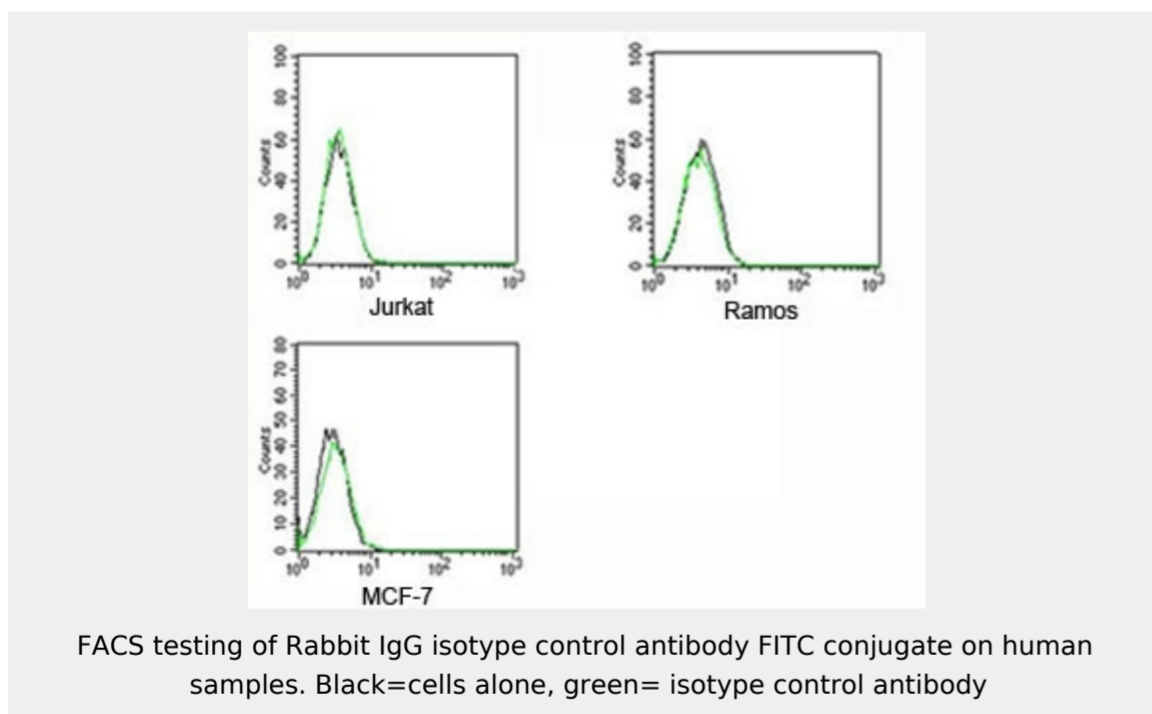
Not Applicable

References

Protein A Affinity Chromatography

Product Description

Isotype control antibodies are negative controls used to measure non-specific binding or background levels of a primary antibody in different cell types. They are not specific to any target in a cell, yet retain all non-specific characteristics of the antibodies they control.



All products are for RESEARCH USE ONLY. Not for diagnostic & therapeutic purposes!