

Goat Anti-Rabbit IgG (H+L) FITC conjugated Antibody

Catalog No: tcba13695



Available Sizes

Size: 100ul



Specifications

Application:

IF,FC

Species Reactivity:

Rabbit

Host Species:

Goat

Immunogen / Amino acids:

Rabbit IgG

Conjugation:

FITC

Clonality:

Polyclonal

Isotype:

Fluorescein conjugated IgG

Form:

Liquid

Storage Buffer:

Buffer: PBS with 0.02% sodium azide, 50% glycerol, pH7.3.

Recommended Dilution:

ICC 1:20 - 1:100

FC 1:20 - 1:100

Amino Acid Sequence:

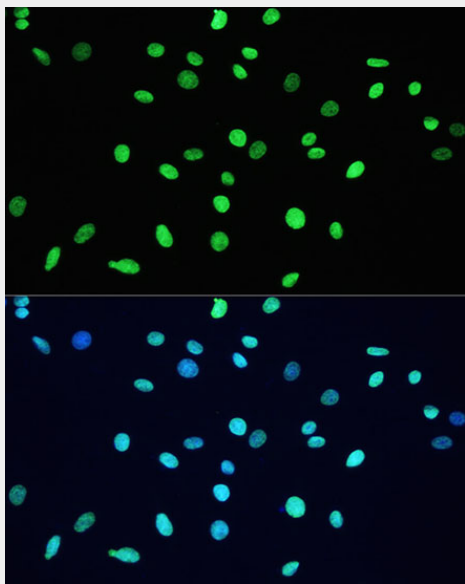
Affinity purification

Storage Instruction:

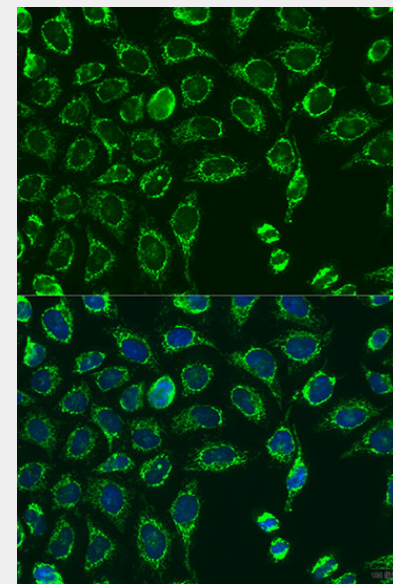
Store at -20°C. Avoid freeze / thaw cycles.

Reference Sequence No.:

Affinity purification



Immunofluorescence analysis of C6 cells, using Acetyl-DNMT1-K1127/K1129/K1131/K1133 antibody as the primary antibody at dilution of 1:100. The cells were incubated with the primary antibody overnight at 4°C. Secondary antibody: FITC Goat Anti-Rabbit IgG (H+L). Blue: DAPI for nuclear staining.



Immunofluorescence analysis of USOS cells, using MATN3 antibody as the primary antibody at dilution of 1:100. The cells were incubated with the primary antibody overnight at 4°C. Secondary antibody: FITC Goat Anti-Rabbit IgG (H+L). Blue: DAPI for nuclear staining.

All products are for RESEARCH USE ONLY. Not for diagnostic & therapeutic purposes!