

β-Tubulin Monoclonal Antibody

Catalog No: tcba13651



Available Sizes

Size: 100ul

Size: 200ul



Specifications

Application:

WB,IF

Research Area:

Epigenetics & Nuclear Signaling,Epigenetic Modifications,Epigenetic Modifications_Methylation,Epigenetics & Nuclear Signaling,Epigenetic Modifications,Epigenetic Modifications_Methylation,

Species Reactivity:

Human,Mouse,Rat,Hamster,Monkey,Goat,Chlamydomonas Reinhardtii

Host Species:

Mouse

Immunogen / Amino acids:

Recombinant protein of human β-Tubulin

Conjugation:

Unconjugated

Clonality:

Monoclonal

Isotype:

IgG

Storage Buffer:

Buffer: PBS with 0.02% sodium azide, 50% glycerol, pH7.3.

Recommended Dilution:

WB 1:2000 - 1:5000
IF 1:50- 1:200

Storage Instruction:

Store at -20°C. Avoid freeze / thaw cycles.

Alternative Names:

CDCBM6;CSCSC1;M40;OK/SW-cl.56;TUBB1;TUBB5

SwissProt:

P07437

Gene ID:

203068 (human);

Calculated Molecular Weight:

49kDa

Purification:

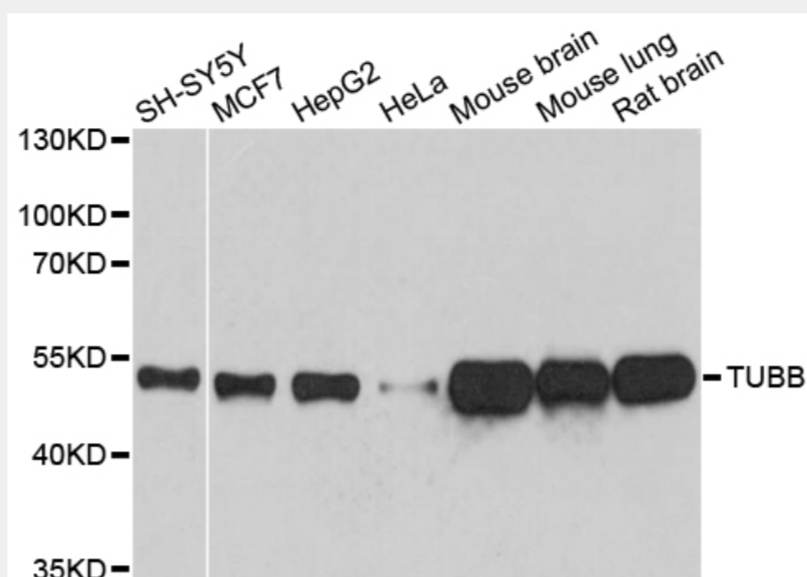
Affinity purification

Cellular Location:

Cytoplasm,cytoskeleton,

Product Description

This gene encodes a beta tubulin protein. This protein forms a dimer with alpha tubulin and acts as a structural component of microtubules. Mutations in this gene cause cortical dysplasia, complex, with other brain malformations 6. Alternative splicing results in multiple splice variants. There are multiple pseudogenes for this gene on chromosomes 1, 6, 7, 8, 9, and 13.



Western blot analysis of extracts of various cell lines, using β -Tubulin antibody at 1:5000 dilution.
Secondary antibody: HRP Goat Anti-Mouse IgG (H+L) at 1:10000 dilution.
Lysates/proteins: 25ug per lane.
Blocking buffer: 3% nonfat dry milk in TBST.
Detection: ECL Basic Kit.
Exposure time: 10s.

All products are for RESEARCH USE ONLY. Not for diagnostic & therapeutic purposes!