

# β-Tubulin Monoclonal Antibody

Catalog No: tcba13645



## Available Sizes

---

**Size:** 100ul

---

**Size:** 200ul

---



## Specifications

---

**Application:**

WB,IHC

---

**Research Area:**

Epigenetics & Nuclear Signaling,Epigenetic Modifications,Epigenetic Modifications\_Methylation,Epigenetics & Nuclear Signaling,Epigenetic Modifications,Epigenetic Modifications\_Methylation,

---

**Species Reactivity:**

Human,Mouse,Rat

---

**Host Species:**

Mouse

---

**Immunogen / Amino acids:**

Recombinant protein of human TUBB

---

**Conjugation:**

Unconjugated

---

**Clonality:**

Monoclonal

---

**Isotype:**

IgG

---

**Storage Buffer:**

Buffer: PBS with 0.02% sodium azide, 50% glycerol, pH7.3.

---

**Recommended Dilution:**

WB 1:2000 - 1:10000  
IHC 1:200 - 1:500

**Storage Instruction:**

Store at -20°C. Avoid freeze / thaw cycles.

**SwissProt:**

P07437

**Gene ID:**

203068 (human);

**Calculated Molecular Weight:**

50kDa

**Purification:**

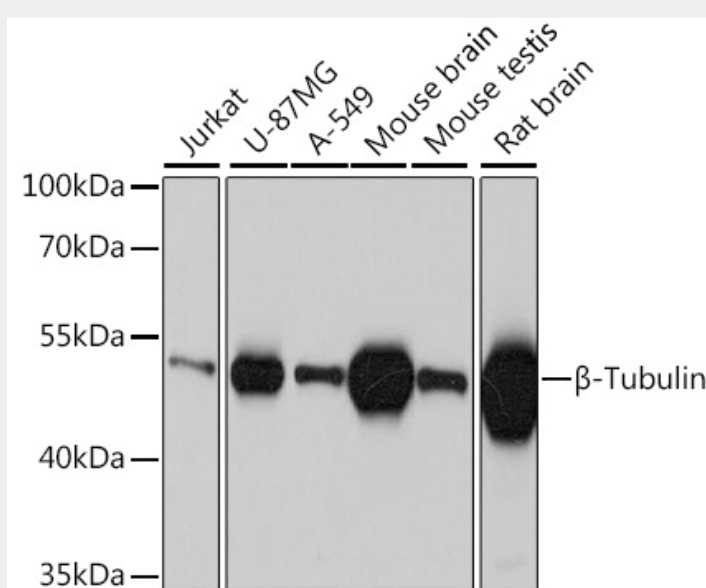
Affinity purification

**Cellular Location:**

Cytoplasm, cytoskeleton,

**Product Description**

This gene encodes a beta tubulin protein. This protein forms a dimer with alpha tubulin and acts as a structural component of microtubules. Mutations in this gene cause cortical dysplasia, complex, with other brain malformations 6. Alternative splicing results in multiple splice variants. There are multiple pseudogenes for this gene on chromosomes 1, 6, 7, 8, 9, and 13.



Western blot analysis of extracts of various cell lines, using  $\beta$ -Tubulin antibody at 1:5000 dilution.  
Secondary antibody: HRP Goat Anti-Mouse IgG (H+L) at 1:10000 dilution.  
Lysates/proteins: 25ug per lane.  
Blocking buffer: 3% nonfat dry milk in TBST.  
Detection: ECL Basic Kit.  
Exposure time: 1s.

All products are for RESEARCH USE ONLY. Not for diagnostic & therapeutic purposes!