

TUBA4A Polyclonal Antibody

Catalog No: tcba13658



Available Sizes

Size: 50ul

Size: 100ul

Size: 200ul



Specifications

Application:

WB,IHC

Research Area:

Epigenetics & Nuclear Signaling,Epigenetic Modifications,Epigenetic Modifications_Methylation,Epigenetics & Nuclear Signaling,Epigenetic Modifications,Epigenetic Modifications_Methylation,

Species Reactivity:

Human,Mouse,Rat

Host Species:

Rabbit

Immunogen / Amino acids:

Recombinant protein of human TUBA4A

Conjugation:

Unconjugated

Clonality:

Polyclonal

Isotype:

IgG

Storage Buffer:

Buffer: PBS with 0.02% sodium azide, 50% glycerol, pH7.3.

Recommended Dilution:

WB 1:500 - 1:2000

IHC 1:50 - 1:200

Storage Instruction:

Store at -20°C. Avoid freeze / thaw cycles.

Alternative Names:

ALS22;H2-ALPHA;TUBA1

SwissProt:

P68366

Gene ID:

7277 (human);

Calculated Molecular Weight:

48kDa/49kDa

Purification:

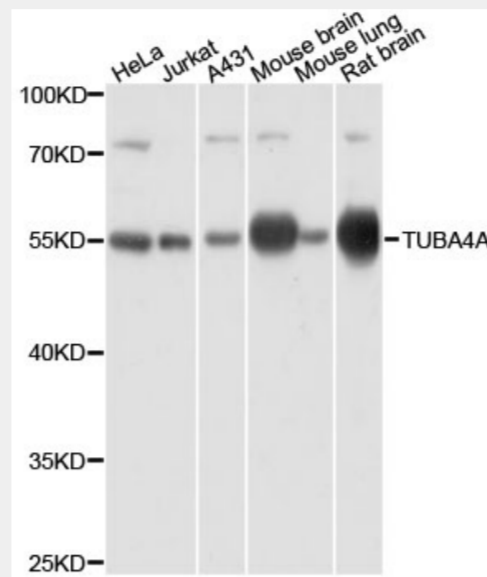
Affinity purification

Cellular Location:

Cytoplasm,cytoskeleton,

Product Description

Microtubules of the eukaryotic cytoskeleton perform essential and diverse functions and are composed of a heterodimer of alpha and beta tubulin. The genes encoding these microtubule constituents are part of the tubulin superfamily, which is composed of six distinct families. Genes from the alpha, beta and gamma tubulin families are found in all eukaryotes. The alpha and beta tubulins represent the major components of microtubules, while gamma tubulin plays a critical role in the nucleation of microtubule assembly. There are multiple alpha and beta tubulin genes and they are highly conserved among and between species. This gene encodes an alpha tubulin that is a highly conserved homolog of a rat testis-specific alpha tubulin. Alternatively spliced transcript variants encoding different isoforms have been found for this gene.



Western blot analysis of extracts of various cell lines, using TUBA4A antibody at 1:3000 dilution.
Secondary antibody: HRP Goat Anti-Rabbit IgG (H+L) at 1:10000 dilution.
Lysates/proteins: 25ug per lane.
Blocking buffer: 3% nonfat dry milk in TBST.
Detection: ECL Basic Kit.
Exposure time: 30s.

All products are for RESEARCH USE ONLY. Not for diagnostic & therapeutic purposes!