

# alpha Tubulin Polyclonal Antibody

Catalog No: tcba13652



## Available Sizes

---

**Size:** 50ul

---

**Size:** 100ul

---

**Size:** 200ul

---



## Specifications

---

**Application:**

WB

---

**Research Area:**

Epigenetics & Nuclear Signaling,Epigenetic Modifications,Epigenetic Modifications\_Methylation,Epigenetics & Nuclear Signaling,Epigenetic Modifications,Epigenetic Modifications\_Methylation,

---

**Species Reactivity:**

Mouse

---

**Host Species:**

Rabbit

---

**Immunogen / Amino acids:**

Recombinant fusion protein containing a sequence corresponding to amino acids 1-451 of human alpha Tubulin (NP\_006073.2).

---

**Conjugation:**

Unconjugated

---

**Clonality:**

Polyclonal

---

**Isotype:**

IgG

---

**Storage Buffer:**

Buffer: PBS with 0.02% sodium azide, 50% glycerol, pH7.3.

---

**Recommended Dilution:**

WB 1:500 - 1:2000

---

**Storage Instruction:**

Store at -20°C. Avoid freeze / thaw cycles.

---

**Alternative Names:**

K-ALPHA-1

---

**SwissProt:**

P68363

---

**Gene ID:**

10376 (human);

---

**Calculated Molecular Weight:**

37kDa/50kDa

---

**Purification:**

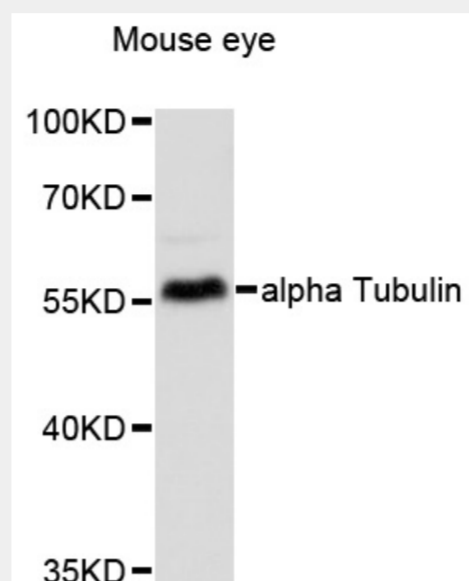
Affinity purification

---

**Cellular Location:**

Cytoplasm, cytoskeleton,

---



Western blot analysis of extracts of mouse eye, using alpha Tubulin antibody at 1:1000 dilution.  
Secondary antibody: HRP Goat Anti-Rabbit IgG (H+L) at 1:10000 dilution.  
Lysates/proteins: 25ug per lane.  
Blocking buffer: 3% nonfat dry milk in TBST.  
Detection: ECL Basic Kit.  
Exposure time: 20s.

All products are for RESEARCH USE ONLY. Not for diagnostic & therapeutic purposes!