

β-tubulin Polyclonal Antibody

Catalog No: tcba13650



Available Sizes

Size: 50ul

Size: 100ul

Size: 200ul



Specifications

Application:

WB,IF

Research Area:

Epigenetics & Nuclear Signaling,Epigenetic Modifications,Epigenetic Modifications_Methylation,Epigenetics & Nuclear Signaling,Epigenetic Modifications,Epigenetic Modifications_Methylation,

Species Reactivity:

Human,Mouse,Rat

Host Species:

Rabbit

Immunogen / Amino acids:

Recombinant fusion protein containing a sequence corresponding to amino acids 40-260 of human β-tubulin (NP_006077.2).

Conjugation:

Unconjugated

Clonality:

Polyclonal

Isotype:

IgG

Storage Buffer:

Buffer: PBS with 0.02% sodium azide, 50% glycerol, pH7.3.

Recommended Dilution:

WB 1:500 - 1:2000

IF 1:50 - 1:200

Storage Instruction:

Store at -20°C. Avoid freeze / thaw cycles.

Alternative Names:

CDCBM6;CSCSC1;M40;OK/SW-cl.56;TUBB1;TUBB5

SwissProt:

P07437

Gene ID:

10381 (human);

Calculated Molecular Weight:

49kDa

Purification:

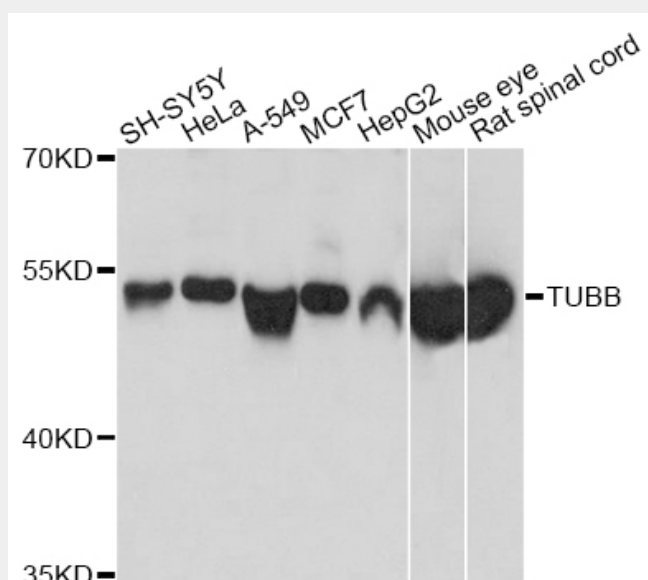
Affinity purification

Cellular Location:

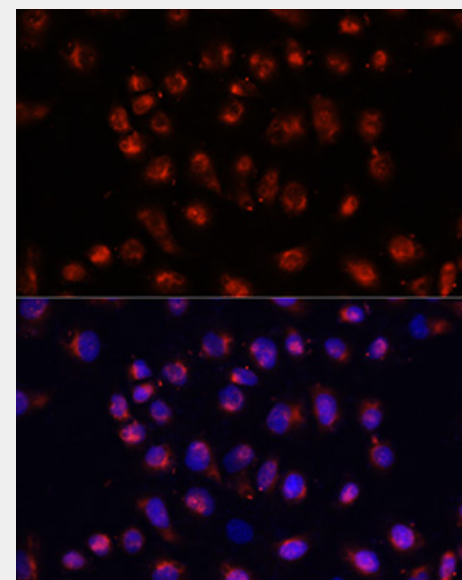
Cytoplasm,cytoskeleton,

Product Description

This gene encodes a beta tubulin protein. This protein forms a dimer with alpha tubulin and acts as a structural component of microtubules. Mutations in this gene cause cortical dysplasia, complex, with other brain malformations 6. Alternative splicing results in multiple splice variants. There are multiple pseudogenes for this gene on chromosomes 1, 6, 7, 8, 9, and 13.



Western blot analysis of extracts of various cell lines, using TUBB antibody at 1:1000 dilution.
Secondary antibody: HRP Goat Anti-Rabbit IgG (H+L) at 1:10000 dilution.
Lysates/proteins: 25ug per lane.
Blocking buffer: 3% nonfat dry milk in TBST.
Detection: ECL Basic Kit.
Exposure time: 3s.



Immunofluorescence analysis of HeLa cells using TUBB antibody at dilution of 1:100.
Blue: DAPI for nuclear staining.

All products are for RESEARCH USE ONLY. Not for diagnostic & therapeutic purposes!