

# TUBA4A Polyclonal Antibody

Catalog No: tcba13649



## Available Sizes

---

**Size:** 50ul

**Size:** 100ul

**Size:** 200ul



## Specifications

---

**Application:**

WB,IHC,IF

**Research Area:**

Epigenetics & Nuclear Signaling,Epigenetic Modifications,Epigenetic Modifications\_Methylation,Epigenetics & Nuclear Signaling,Epigenetic Modifications,Epigenetic Modifications\_Methylation,

**Species Reactivity:**

Human,Mouse,Rat

**Host Species:**

Rabbit

**Immunogen / Amino acids:**

Recombinant protein of human TUBA4A

**Conjugation:**

Unconjugated

**Clonality:**

Polyclonal

**Isotype:**

IgG

**Storage Buffer:**

Buffer: PBS with 0.02% sodium azide, 50% glycerol, pH7.3.

---

**Recommended Dilution:**

WB 1:500 - 1:2000

IHC 1:25 - 1:50

IF 1:25 - 1:100

---

**Storage Instruction:**

Store at -20°C. Avoid freeze / thaw cycles.

---

**Alternative Names:**

ALS22;H2-ALPHA;TUBA1

---

**SwissProt:**

P68366

---

**Gene ID:**

7277 (human);

---

**Calculated Molecular Weight:**

48kDa/49kDa

---

**Purification:**

Affinity purification

---

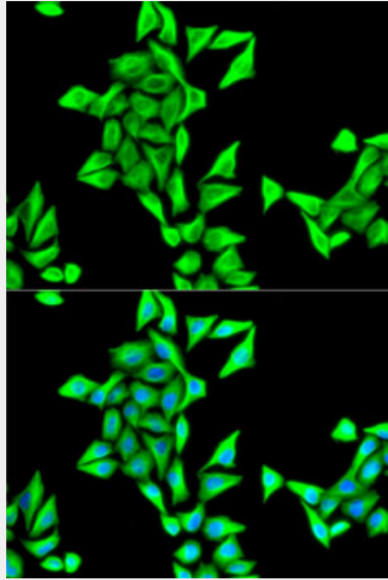
**Cellular Location:**

Cytoplasm,cytoskeleton,

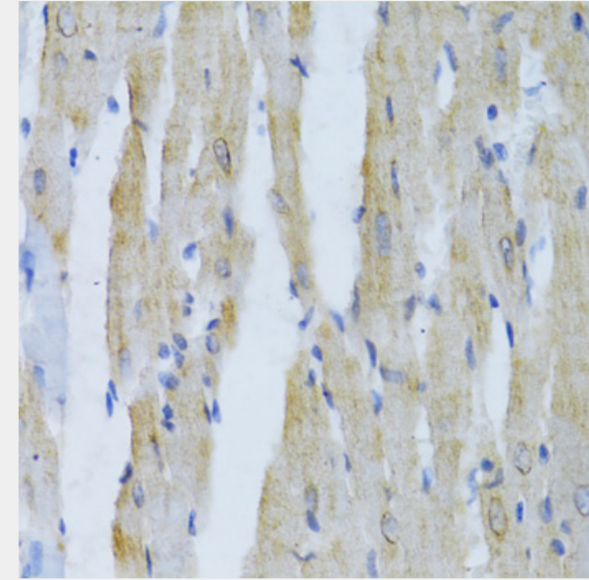
---

**Product Description**

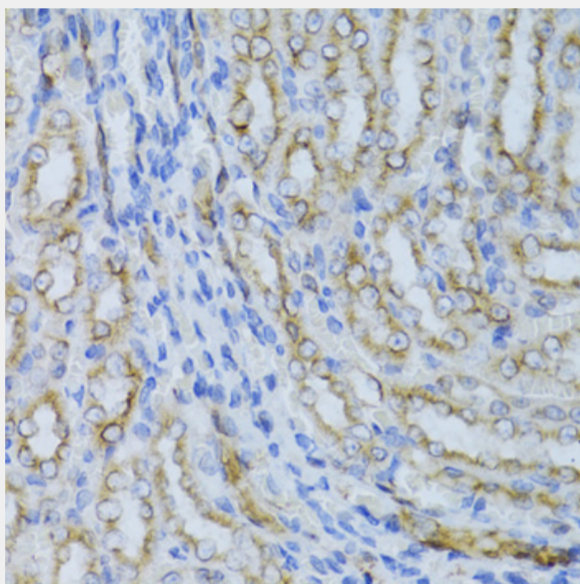
Microtubules of the eukaryotic cytoskeleton perform essential and diverse functions and are composed of a heterodimer of alpha and beta tubulin. The genes encoding these microtubule constituents are part of the tubulin superfamily, which is composed of six distinct families. Genes from the alpha, beta and gamma tubulin families are found in all eukaryotes. The alpha and beta tubulins represent the major components of microtubules, while gamma tubulin plays a critical role in the nucleation of microtubule assembly. There are multiple alpha and beta tubulin genes and they are highly conserved among and between species. This gene encodes an alpha tubulin that is a highly conserved homolog of a rat testis-specific alpha tubulin. Alternatively spliced transcript variants encoding different isoforms have been found for this gene.



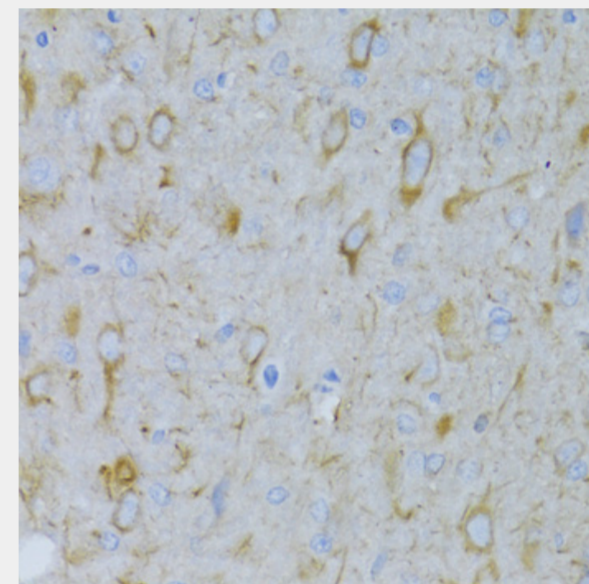
Immunohistochemistry of paraffin-embedded rat brain using TUBA4A Antibody at dilution of 1:100 (40x lens).



Immunohistochemistry of paraffin-embedded rat kidney using TUBA4A Antibody at dilution of 1:100 (40x lens).



Immunohistochemistry of paraffin-embedded rat heart using TUBA4A Antibody at dilution of 1:100 (40x lens).



Immunofluorescence analysis of HeLa cells using TUBA4A antibody. Blue: DAPI for nuclear staining.

All products are for RESEARCH USE ONLY. Not for diagnostic & therapeutic purposes!