

alpha Tubulin Monoclonal Antibody

Catalog No: tcba13647



Available Sizes

Size: 50ul

Size: 100ul

Size: 200ul



Specifications

Application:

WB,IHC,IF,IP

Research Area:

Epigenetics & Nuclear Signaling,Epigenetic Modifications,Epigenetic Modifications_Methylation,Epigenetics & Nuclear Signaling,Epigenetic Modifications,Epigenetic Modifications_Methylation,

Species Reactivity:

Human,Mouse,Rat

Host Species:

Mouse

Immunogen / Amino acids:

Recombinant protein of human TUBA1B

Conjugation:

Unconjugated

Clonality:

Monoclonal

Isotype:

IgG

Storage Buffer:

Buffer: PBS with 0.02% sodium azide, 50% glycerol, pH7.3.

Recommended Dilution:

WB 1:5000 - 1:15000

IHC 1:200 - 1:500

IF 1:100 - 1:200

IP 1:100 - 1:200

Storage Instruction:

Store at -20°C. Avoid freeze / thaw cycles.

Alternative Names:

ALS22;H2-ALPHA;TUBA1

SwissProt:

P68366

Gene ID:

7277 (human);

Calculated Molecular Weight:

48kDa/49kDa

Purification:

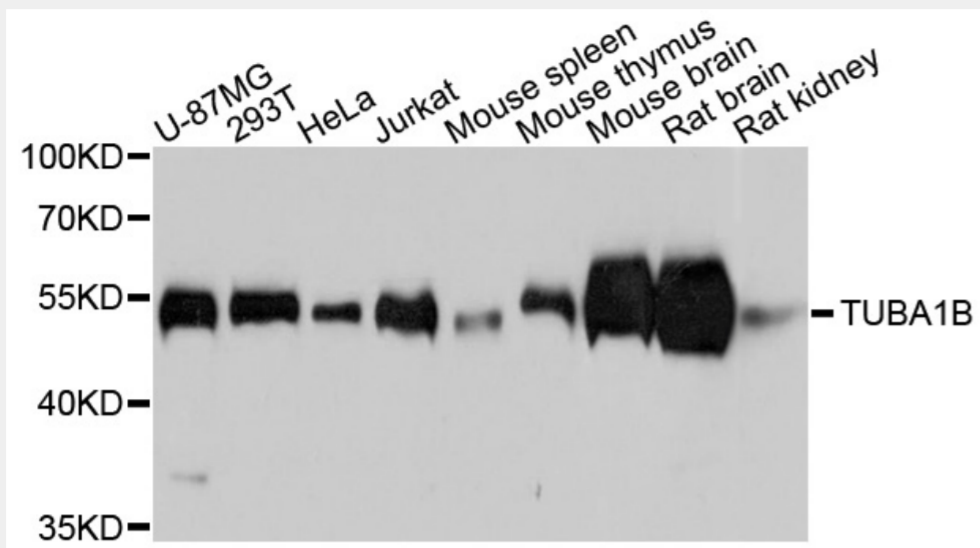
Affinity purification

Cellular Location:

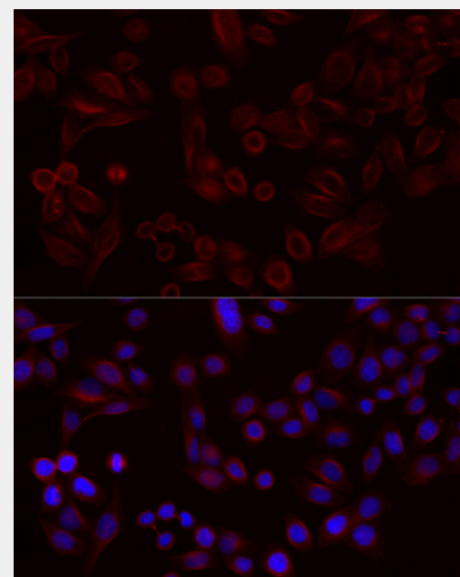
Cytoplasm,cytoskeleton,

Product Description

Microtubules of the eukaryotic cytoskeleton perform essential and diverse functions and are composed of a heterodimer of alpha and beta tubulin. The genes encoding these microtubule constituents are part of the tubulin superfamily, which is composed of six distinct families. Genes from the alpha, beta and gamma tubulin families are found in all eukaryotes. The alpha and beta tubulins represent the major components of microtubules, while gamma tubulin plays a critical role in the nucleation of microtubule assembly. There are multiple alpha and beta tubulin genes and they are highly conserved among and between species. This gene encodes an alpha tubulin that is a highly conserved homolog of a rat testis-specific alpha tubulin. Alternatively spliced transcript variants encoding different isoforms have been found for this gene.



Western blot analysis of extracts of various cell lines, using alpha Tubulin antibody at 1:5000 dilution.
Secondary antibody: HRP Goat Anti-Mouse IgG (H+L) at 1:10000 dilution.
Lysates/proteins: 25ug per lane.
Blocking buffer: 3% nonfat dry milk in TBST.
Detection: ECL Basic Kit.
Exposure time: 5s.



Immunofluorescence analysis of HeLa cells using TUBA4A antibody at dilution of 1:100 (40x lens). Blue: DAPI for nuclear staining.

All products are for RESEARCH USE ONLY. Not for diagnostic & therapeutic purposes!