

ACTB Monoclonal Antibody

Catalog No: tcba13639



Available Sizes

Size: 50ul

Size: 100ul

Size: 200ul



Specifications

Application:

WB,IHC,IF

Research Area:

Epigenetics & Nuclear Signaling,Epigenetic Modifications,Epigenetic Modifications_Methylation,Epigenetics & Nuclear Signaling,Epigenetic Modifications,Epigenetic Modifications_Methylation,

Species Reactivity:

Human,Mouse,Rat

Host Species:

Mouse

Immunogen / Amino acids:

Fusion protein of human β -actin

Conjugation:

Unconjugated

Clonality:

Monoclonal

Isotype:

IgG

Storage Buffer:

Buffer: PBS with 0.02% sodium azide, 50% glycerol, pH7.3.

Recommended Dilution:

WB 1:10000 - 1:100000

IHC 1:100- 1:200

IF 1:50- 1:200

Storage Instruction:

Store at -20°C. Avoid freeze / thaw cycles.

SwissProt:

P60709

Gene ID:

60 (human);

Calculated Molecular Weight:

41kDa

Purification:

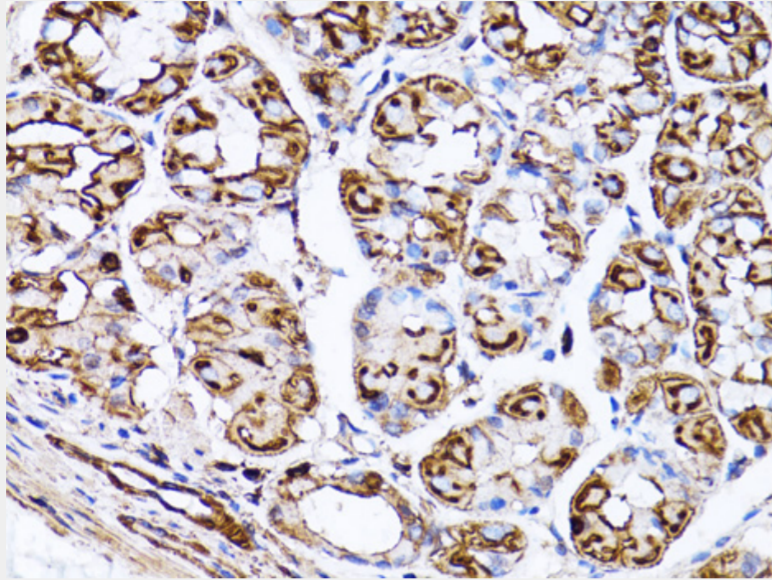
Affinity purification

Cellular Location:

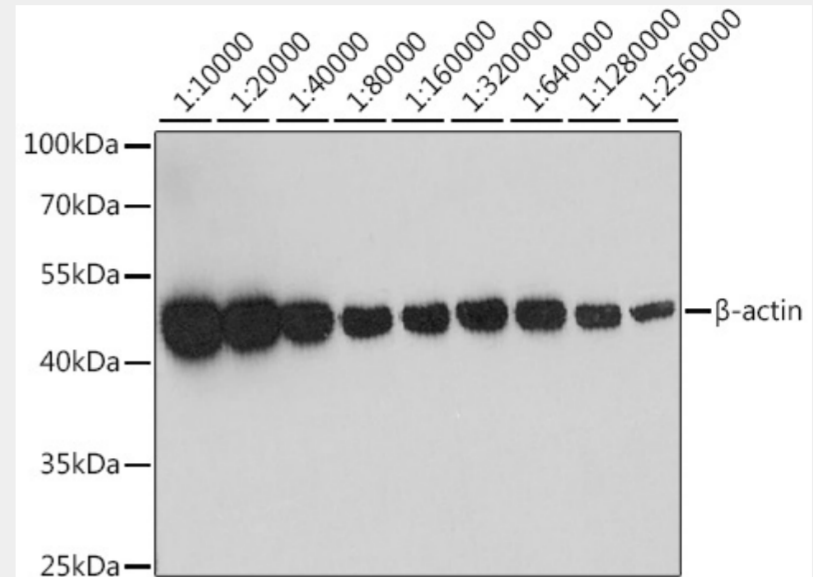
Cytoplasm,cytoskeleton,

Product Description

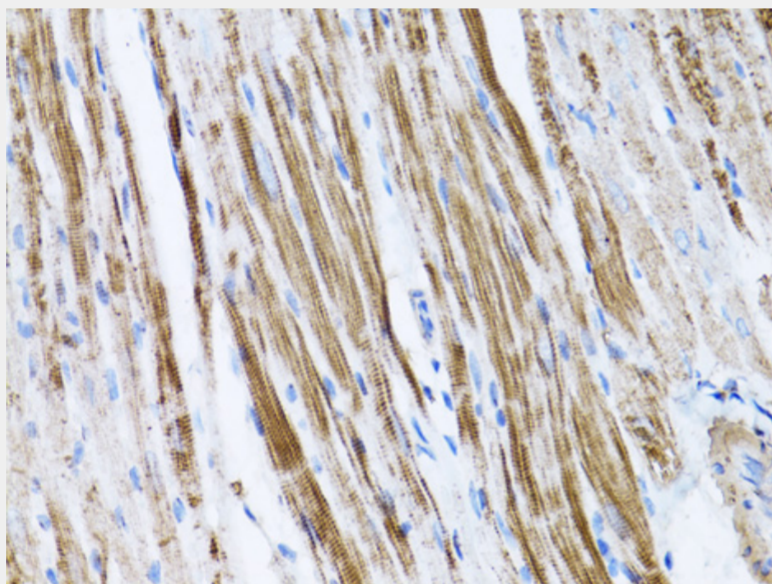
This gene encodes one of six different actin proteins. Actins are highly conserved proteins that are involved in cell motility, structure, and integrity. This actin is a major constituent of the contractile apparatus and one of the two nonmuscle cytoskeletal actins.



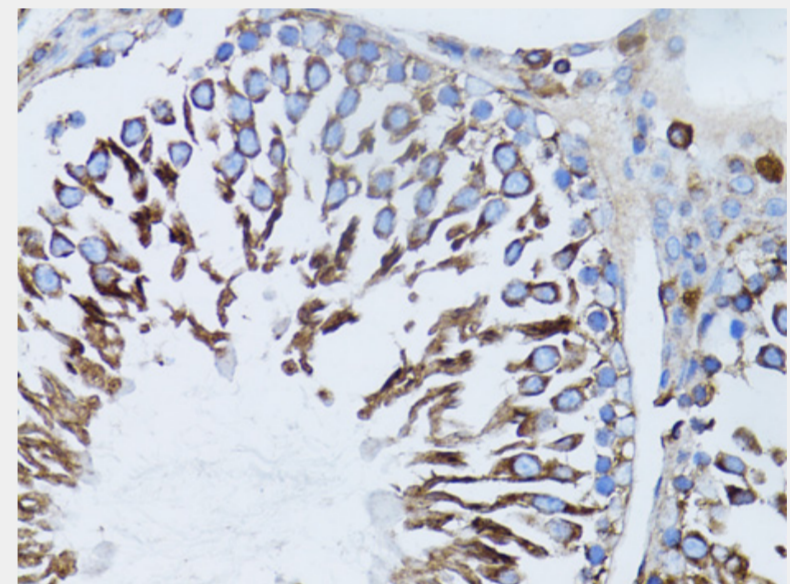
Western blot analysis of extracts of various cell lines, using β -actin antibody at 1:80000 dilution.
Secondary antibody: HRP Goat Anti-Mouse IgG (H+L) at 1:10000 dilution.
Lysates/proteins: 25ug per lane.
Blocking buffer: 3% nonfat dry milk in TBST.
Detection: ECL Basic Kit.
Exposure time: 1s.



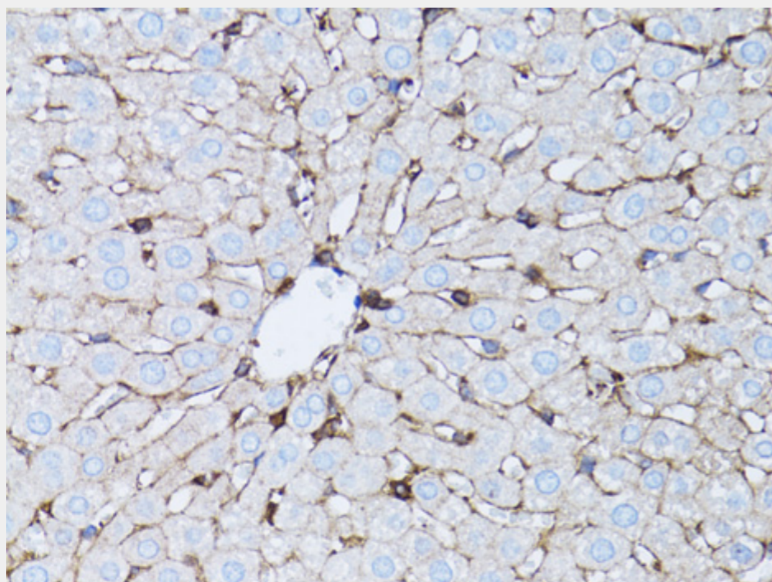
Immunohistochemistry of paraffin-embedded mouse heart using β -actin antibody at dilution of 1:500 (40x lens).



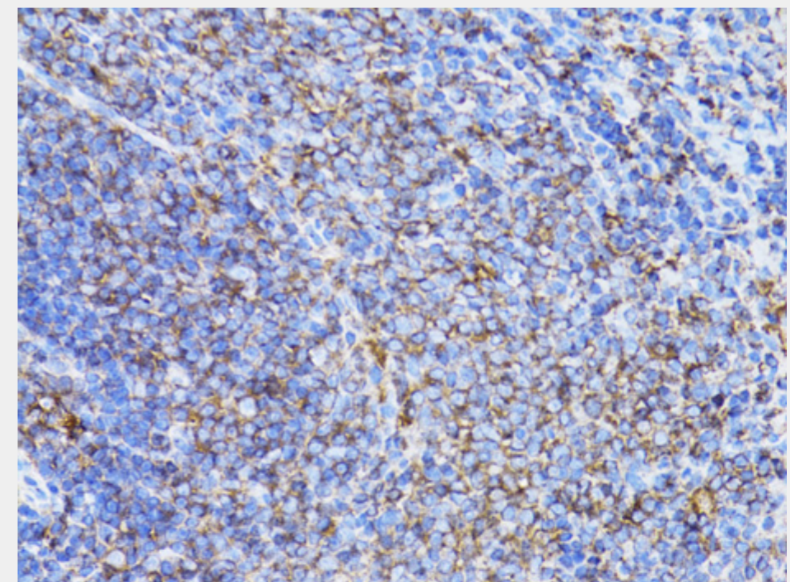
Western blot analysis of extracts of NIH/3T3 cells, using β -actin antibody at 1:10000-1:2560000 dilution.
Secondary antibody: HRP Goat Anti-Mouse IgG (H+L) at 1:10000 dilution.
Lysates/proteins: 25ug per lane.
Blocking buffer: 3% nonfat dry milk in TBST.
Detection: ECL Basic Kit.
Exposure time: 30s.



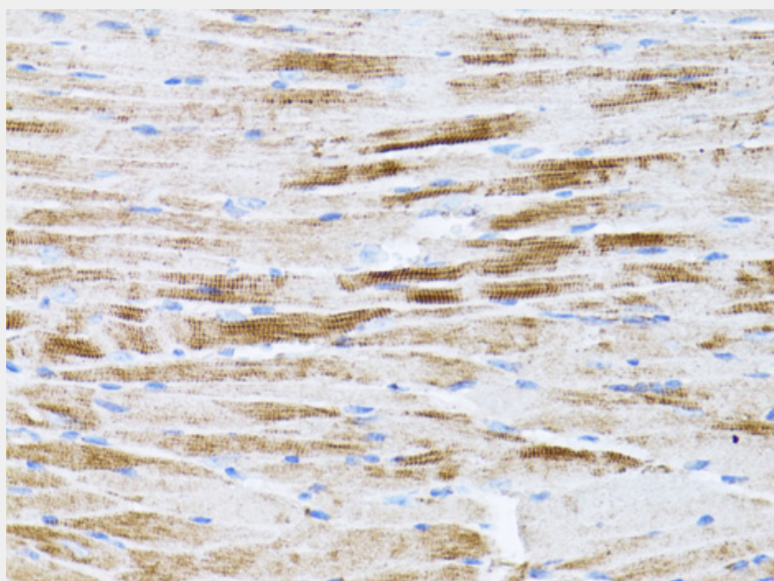
Immunohistochemistry of paraffin-embedded rat liver using β -actin antibody at dilution of 1:500 (40x lens).



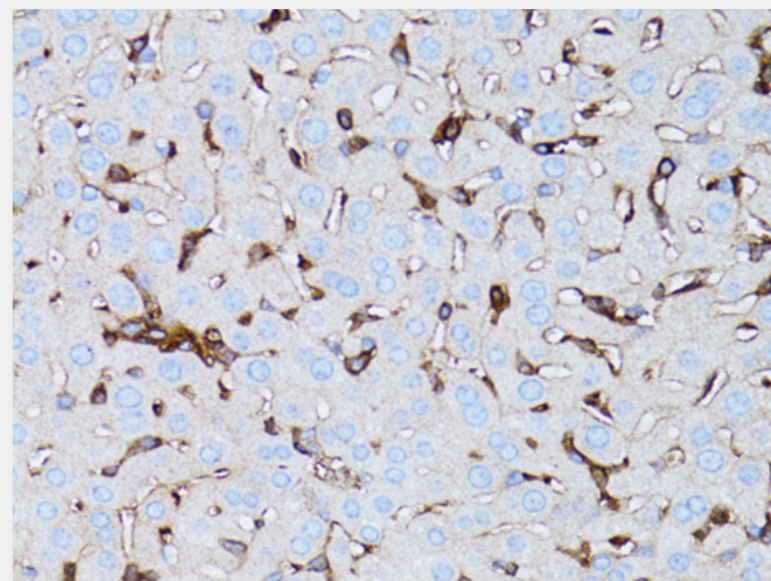
Immunohistochemistry of paraffin-embedded rat testis using β -actin antibody at dilution of 1:500 (40x lens).



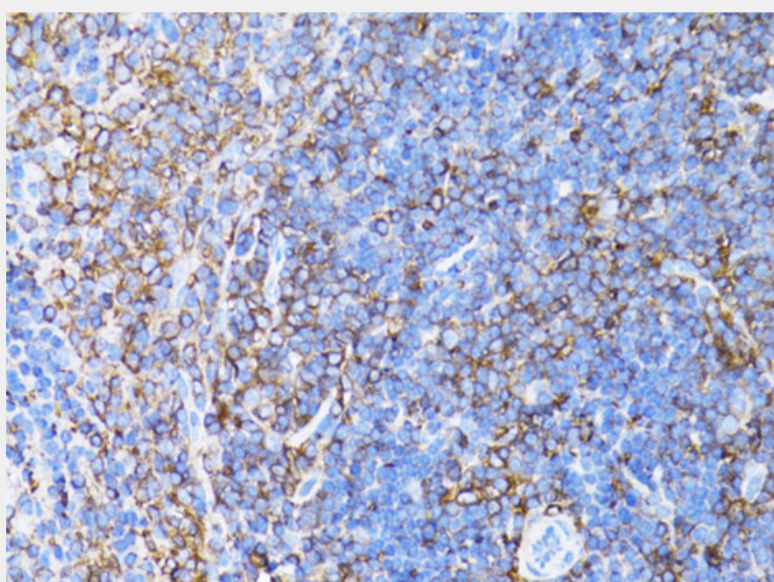
Immunohistochemistry of paraffin-embedded rat spleen using β -actin antibody at dilution of 1:500 (40x lens).



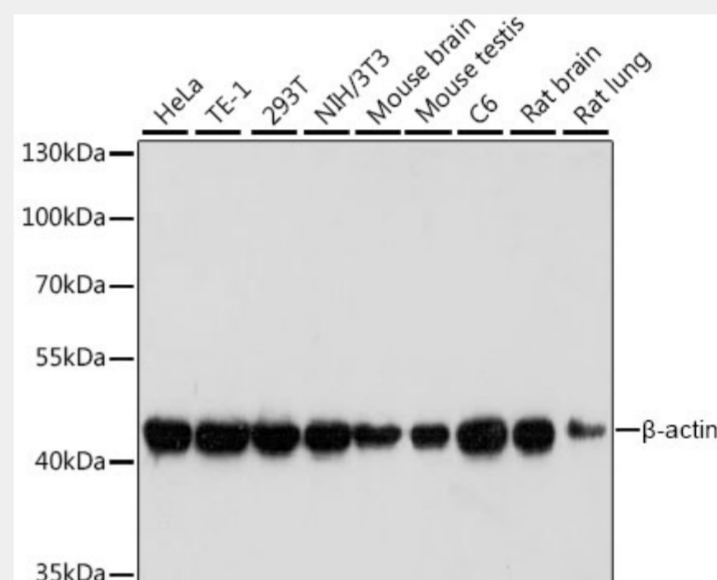
Immunohistochemistry of paraffin-embedded rat heart using β -actin antibody at dilution of 1:500 (40x lens).



Immunohistochemistry of paraffin-embedded human stomach using β -actin antibody at dilution of 1:500 (40x lens).



Immunohistochemistry of paraffin-embedded mouse liver using β -actin antibody at dilution of 1:500 (40x lens).



Immunohistochemistry of paraffin-embedded mouse spleen using β -actin antibody at dilution of 1:500 (40x lens).

All products are for RESEARCH USE ONLY. Not for diagnostic & therapeutic purposes!