

# Monoclonal Antibody to Heat Shock Protein Beta 6 (HSPb6)

Catalog No: tcua8655



## Available Sizes

---

**Size:** 20ul

---

**Size:** 100ul

---

**Size:** 200ul

---



## Specifications

---

**Application:**

WB; IHC; ICC; IP.

---

**Species Reactivity:**

Rattus norvegicus (Rat)

---

**Host Species:**

Mouse

---

**Immunogen / Amino acids:**

Recombinant Heat Shock Protein Beta 6 (HSPb6)

---

**Conjugation:**

Unconjugated

---

**Clonality:**

Monoclonal

---

**Isotype:**

IgG2b Kappa

---

**Form:**

Liquid

---

**Storage Buffer:**

0.01M PBS, pH7.4, containing 0.05% Proclin-300, 50% glycerol.

**Recommended Dilution:**

Western blotting: 0.5-5 $\mu$ g/mL

Immunohistochemistry: 5-30 $\mu$ g/mL

Immunocytochemistry: 5-30 $\mu$ g/mL

Optimal working dilutions must be determined by end user.

**Alternative Names:**

HSP20; Heat Shock Protein 20 kD; Heat Shock Protein B6, Alpha Crystallin Related; Heat shock 20 kDa-like protein p20

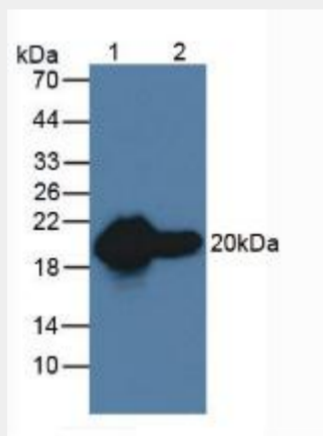
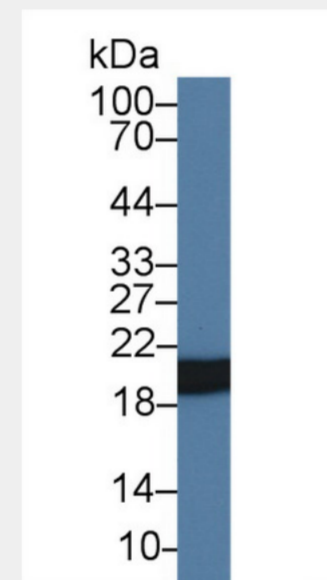


Figure. Western Blot; Sample: Lane1: Rat Heart Tissue; Lane2: Rat Skeletal Muscle Tissue.)



Western Blot; Sample: Rat Skeletal muscle lysate; Primary Ab: 5 $\mu$ g/ml Mouse Anti-Rat HSPb6 Antibody Second Ab: 0.2 $\mu$ g/mL HRP-Linked Caprine Anti-Mouse IgG Polyclonal Antibody Catalog: SAA544Mu19)

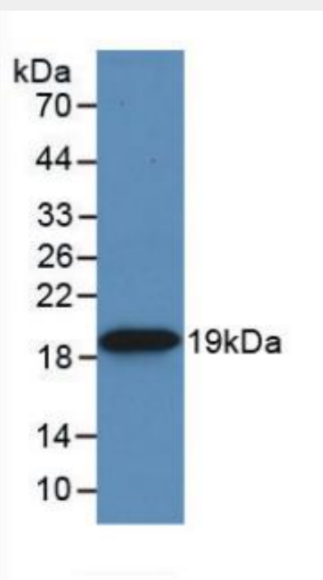


Figure. Western Blot; Sample: Recombinant HSPb6, Rat.)

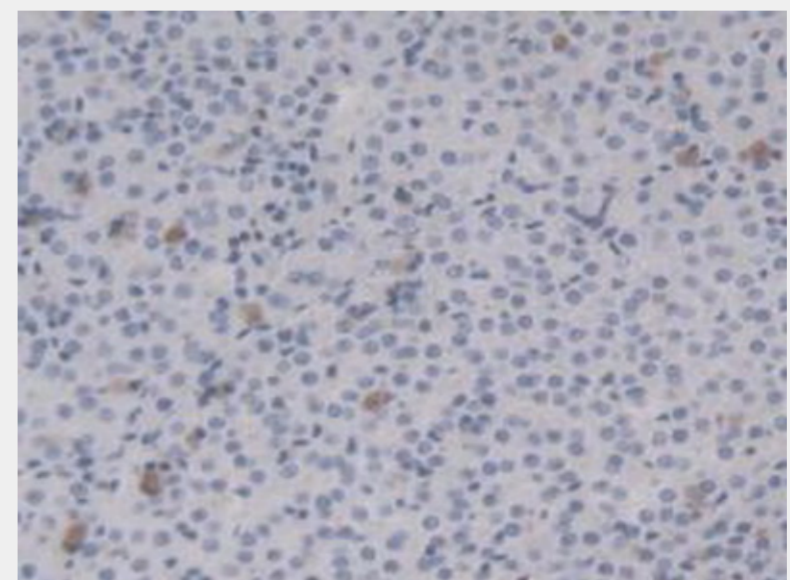


Figure. DAB staining on IHC-P; Samples: Rat Adrenal Gland Tissue.)

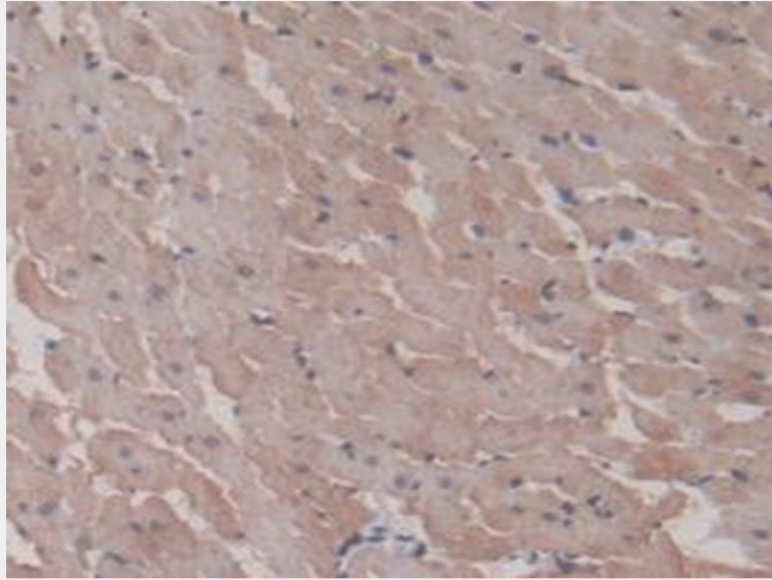


Figure. DAB staining on IHC-P; Samples: Rat Heart Tissue.)

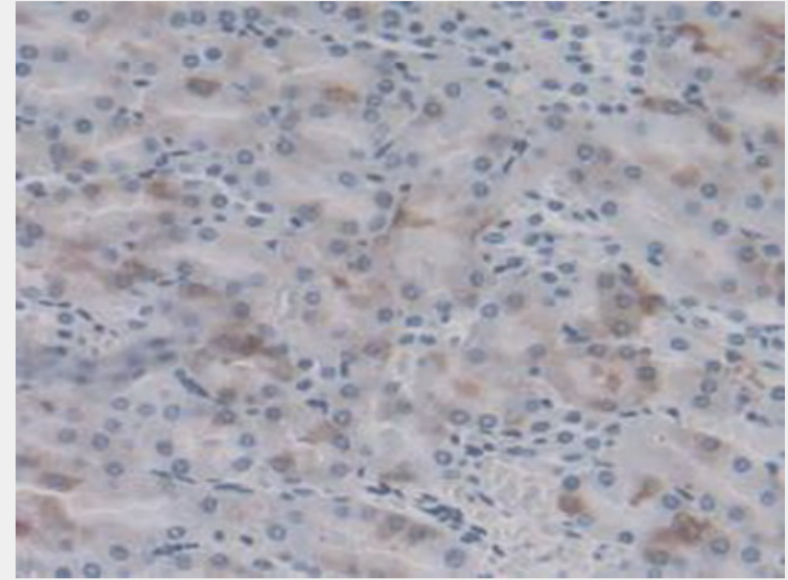


Figure. DAB staining on IHC-P; Samples: Rat Kidney Tissue.)

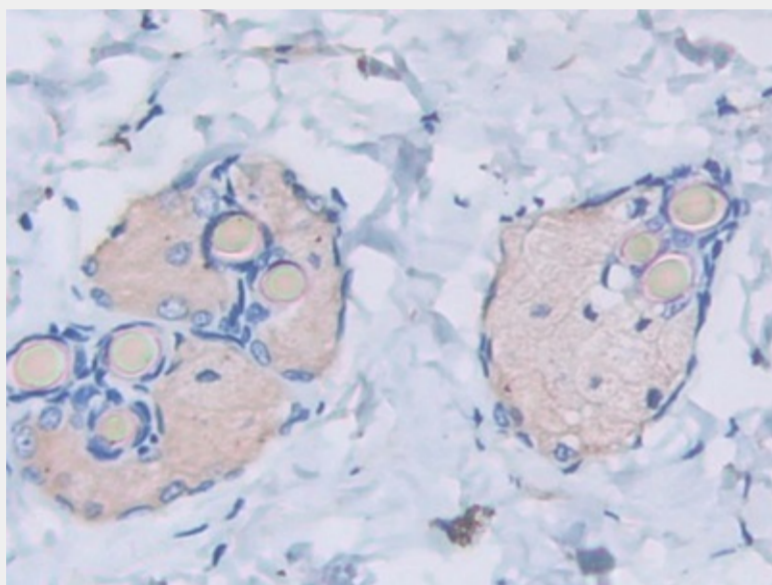


Figure. DAB staining on IHC-P; Samples: Rat Spinal Cord Tissue.)

All products are for RESEARCH USE ONLY. Not for diagnostic & therapeutic purposes!