

Monoclonal Antibody to S100 Calcium Binding Protein A6 (S100A6)

Catalog No: tcua8471



Available Sizes

Size: 20ul

Size: 100ul

Size: 200ul



Specifications

Application:

WB; IHC; ICC; IP.

Species Reactivity:

Homo sapiens (Human)

Host Species:

Mouse

Immunogen / Amino acids:

Recombinant S100 Calcium Binding Protein A6 (S100A6)

Conjugation:

Unconjugated

Clonality:

Monoclonal

Clones:

1-1#

Isotype:

IgG2b Kappa

Form:

Liquid

Storage Buffer:

0.01M PBS, pH7.4, containing 0.05% Proclin-300, 50% glycerol.

Recommended Dilution:

Western blotting: 0.5-5 μ g/mL

Immunohistochemistry: 5-30 μ g/mL

Immunocytochemistry: 5-30 μ g/mL

Optimal working dilutions must be determined by end user.

Alternative Names:

S100-A6; 2A9; 5B10; CABP; CACY; PRA; MLN 4; Calcyclin; Growth factor-inducible protein 2A9; Prolactin receptor-associated protein

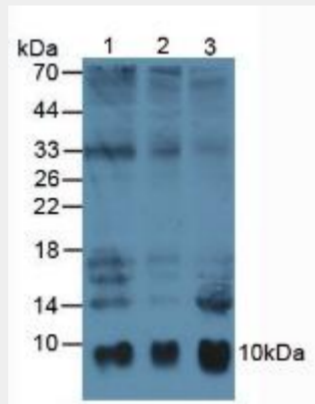
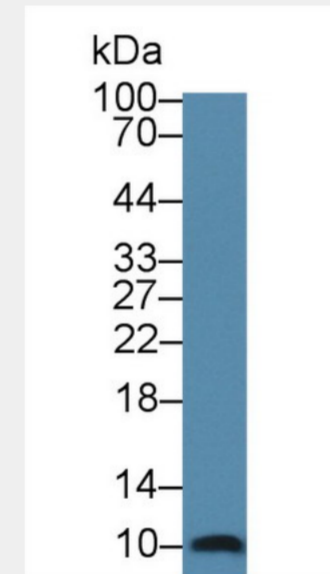


Figure. Western Blot; Sample: Lane1: Human Hela Cells; Lane2: Human A549 Cells; Lane3: Human Mcf7 Cells.)



Western Blot; Sample: Human MCF7 cell lysate; Primary Ab: 3 μ g/ml Mouse Anti-Human S100A6 Antibody Second Ab: 0.2 μ g/mL HRP-Linked Caprine Anti-Mouse IgG Polyclonal Antibody Catalog: SAA544Mu19)

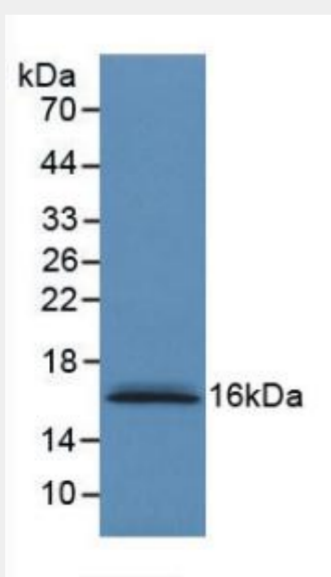


Figure. Western Blot; Sample: Recombinant S100A6, Human.)

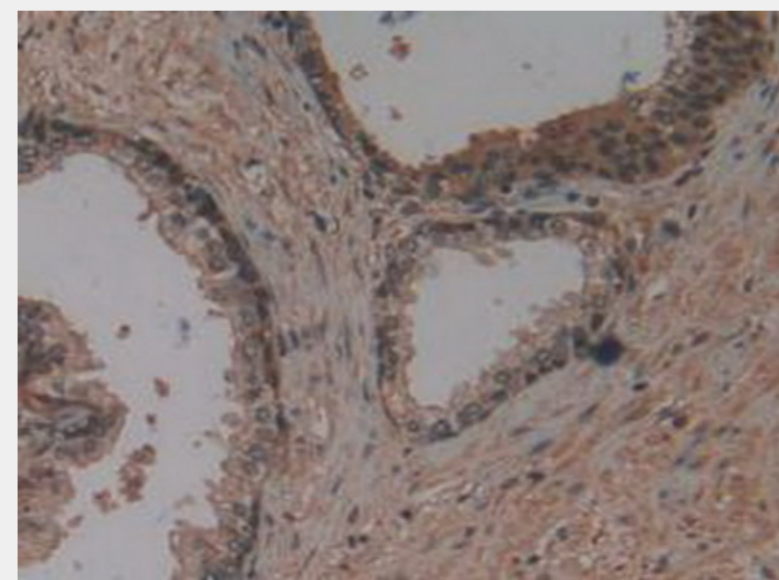


Figure. DAB staining on IHC-P; Samples: Human Prostate Gland Tissue.)

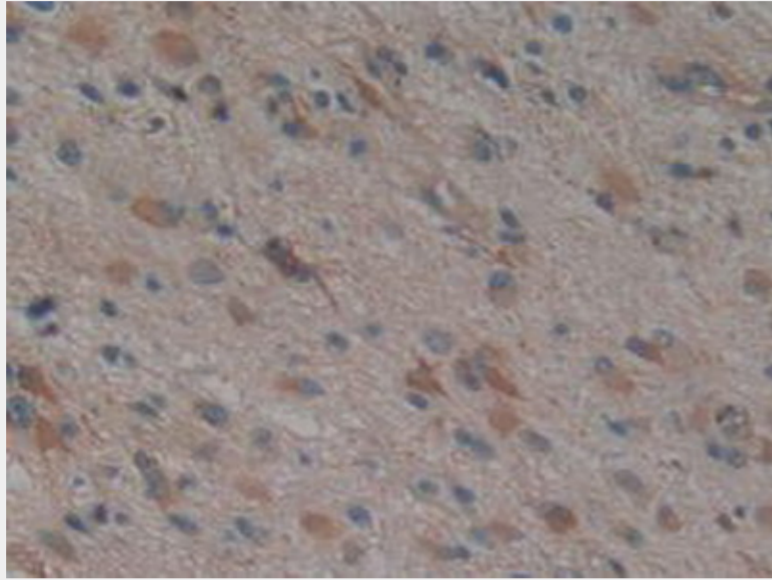


Figure. DAB staining on IHC-P; Samples: Human Glioma Tissue.)

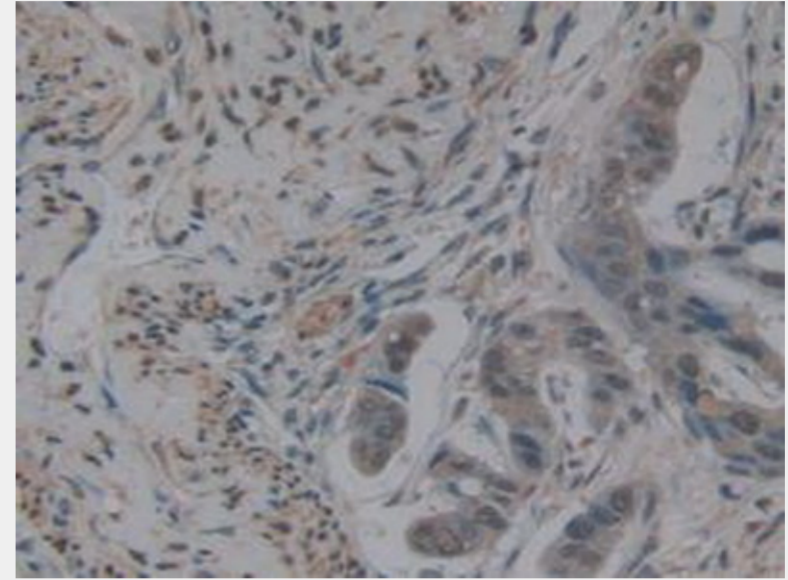


Figure. DAB staining on IHC-P; Samples: Human Pancreas Cancer Tissue.)

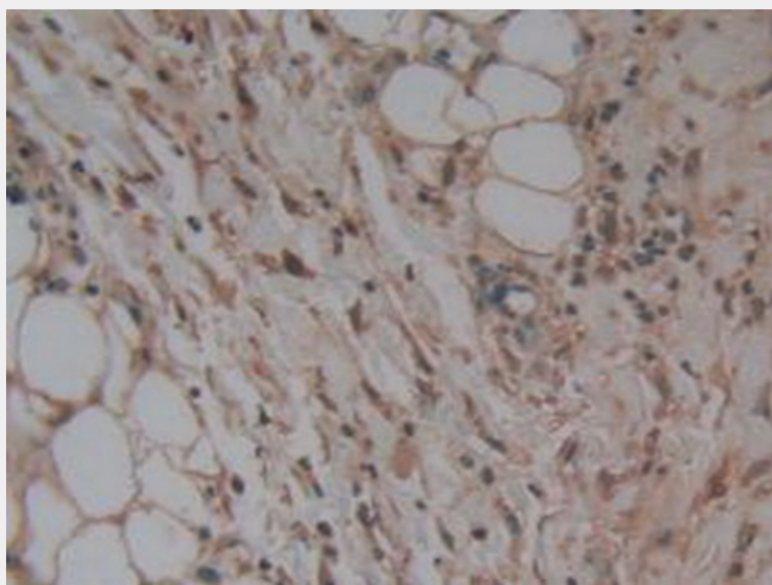


Figure. DAB staining on IHC-P; Samples: Human Skin Cancer Tissue.)

All products are for RESEARCH USE ONLY. Not for diagnostic & therapeutic purposes!