

# Polyclonal Antibody to Galactosidase Alpha (GLa)

Catalog No: tcua7384



## Available Sizes

---

**Size:** 20ul

**Size:** 100ul

**Size:** 200ul



## Specifications

---

**Application:**

WB; IHC; ICC; IP.

**Species Reactivity:**

Homo sapiens (Human)

**Host Species:**

Rabbit

**Immunogen / Amino acids:**

Recombinant Galactosidase Alpha (GLa)

**Conjugation:**

Unconjugated

**Clonality:**

Polyclonal

**Form:**

Liquid

**Storage Buffer:**

0.01M PBS, pH7.4, containing 0.05% Proclin-300, 50% glycerol.

**Recommended Dilution:**

Western blotting: 1-5ug/ml

Immunocytochemistry in formalin fixed cells: 5-20ug/ml  
Immunohistochemistry in formalin fixed frozen section: 5-20ug/ml  
Immunohistochemistry in paraffin section: 5-20ug/ml  
Enzyme-linked Immunosorbent Assay: 0.05-

---

**Alternative Names:**

GALA; GL-A; Alpha-D-Galactoside Galactohydrolase; Alpha-D-Galactosidase A; Melibiase; Agalsidase

---

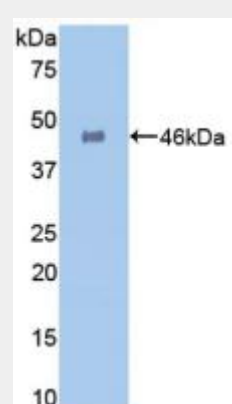


Figure. Western Blot; Sample: Recombinant GLa, Human.)

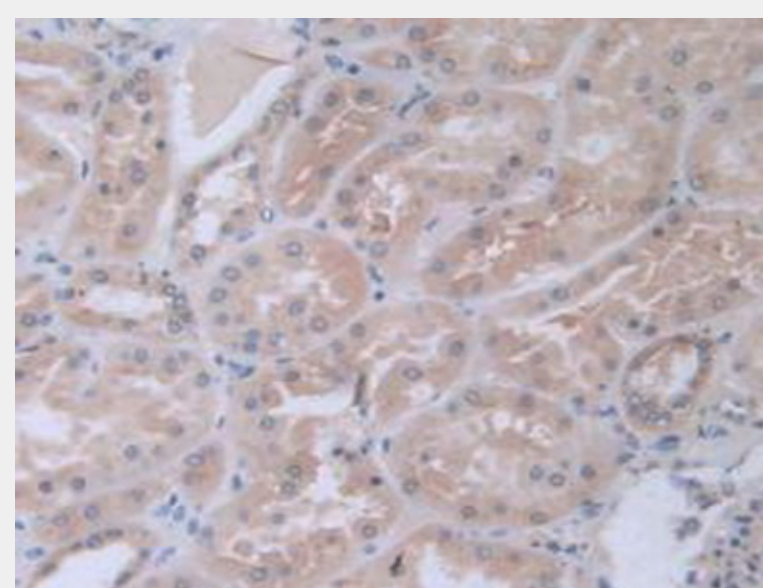


Figure. DAB staining on IHC-P;  
Samples: Human Kidney Tissue.)

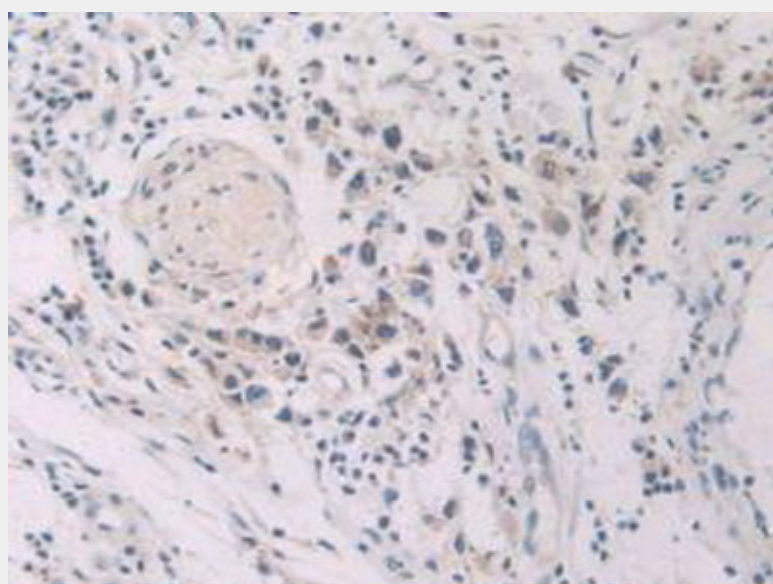


Figure. DAB staining on IHC-P;  
Samples: Human Stomach Cancer Tissue.)

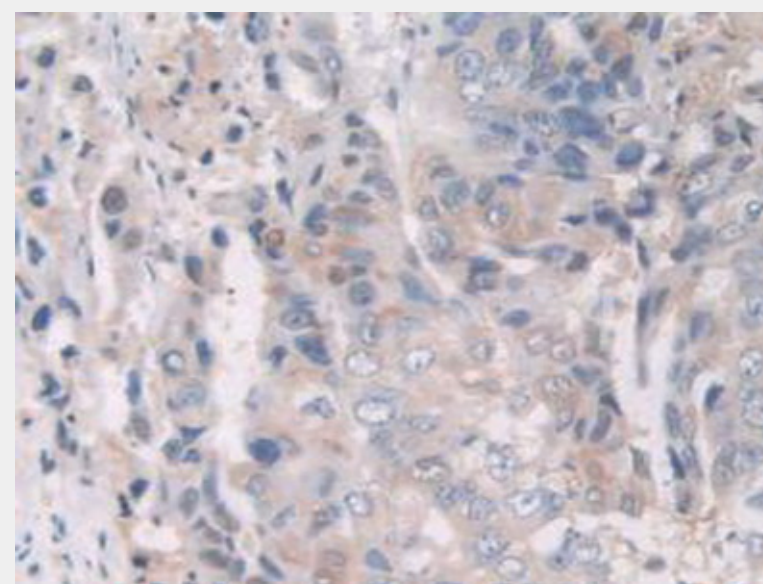


Figure. DAB staining on IHC-P;  
Samples: Human Breast Cancer Tissue.)



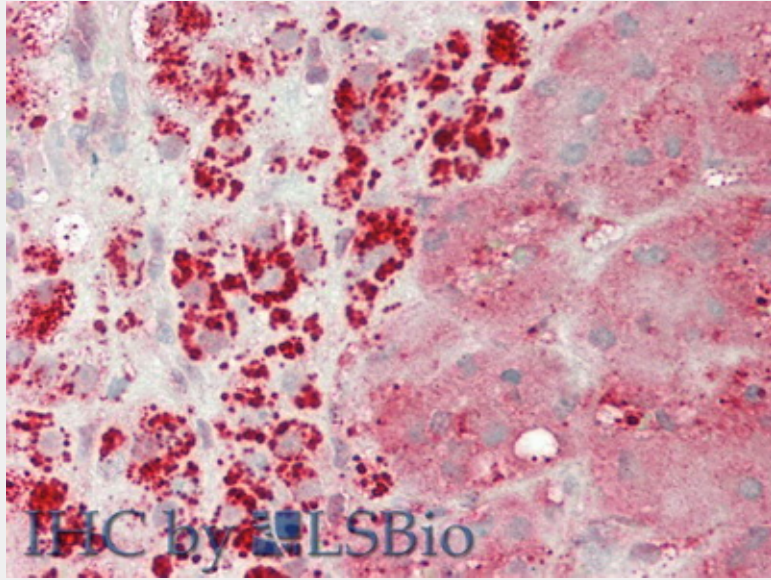


Figure. HE staining on IHC-P; Samples: Human Adrenal Gland Tissue.)

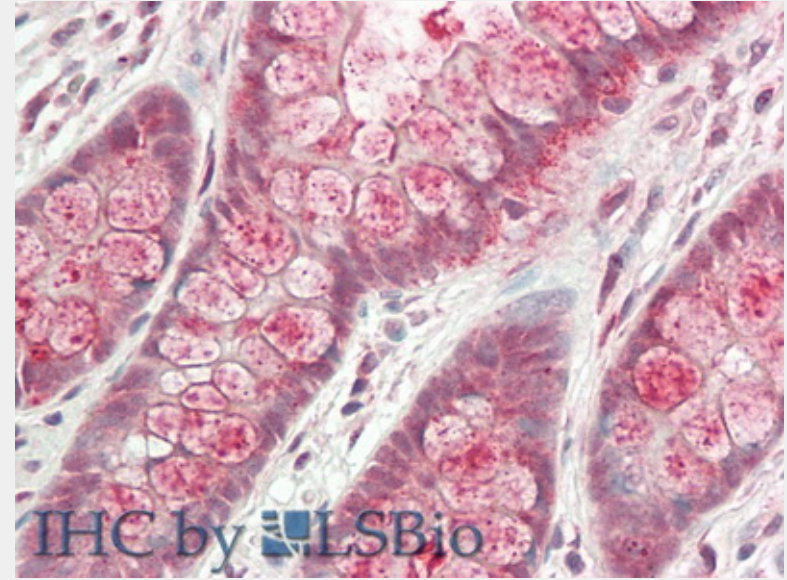


Figure. HE staining on IHC-P; Samples: Human Intestine Tissue.)

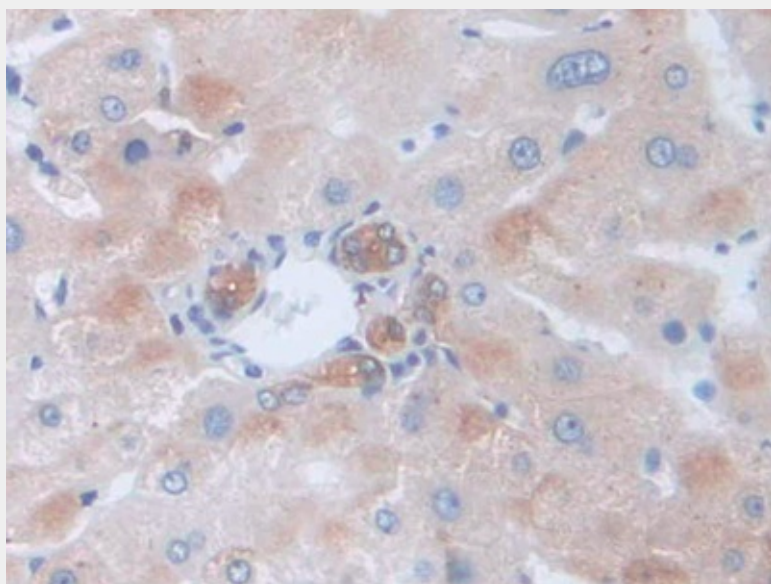


Figure. DAB staining on IHC-P; Samples: Human Liver Tissue.)

All products are for RESEARCH USE ONLY. Not for diagnostic & therapeutic purposes!