

# Polyclonal Antibody to Histone H3 (H3)

Catalog No: tcua7185



## Available Sizes

**Size:** 20ul

**Size:** 100ul

**Size:** 200ul



## Specifications

**Application:**

WB; IHC; ICC; IP.

**Species Reactivity:**

Homo sapiens (Human), Mus musculus (Mouse), Rattus norvegicus (Rat), Oryctolagus cuniculus (Rabbit), Rhesus monkey (Simian), Canis familiaris; Canine (Dog), Bos taurus; Bovine (Cattle), Equus caballus; Equine (Horse), Chicken (Gallus)

**Host Species:**

Rabbit

**Immunogen / Amino acids:**

Recombinant Histone H3 (H3)

**Conjugation:**

Unconjugated

**Clonality:**

Polyclonal

**Form:**

Liquid

**Storage Buffer:**

0.01M PBS, pH7.4, containing 0.05% Proclin-300, 50% glycerol.

**Recommended Dilution:**

Western blotting: 0.5-2 $\mu$ g/mL

Immunohistochemistry: 5-20 $\mu$ g/mL

Immunocytochemistry: 5-20 $\mu$ g/mL

Optimal working dilutions must be determined by end user.

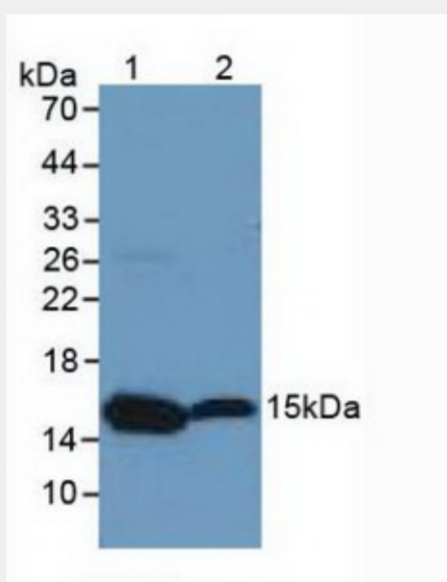


Figure. Western Blot; Sample: Lane1: Mouse Ovary Tissue; Lane2: Mouse Brain Tissue.)

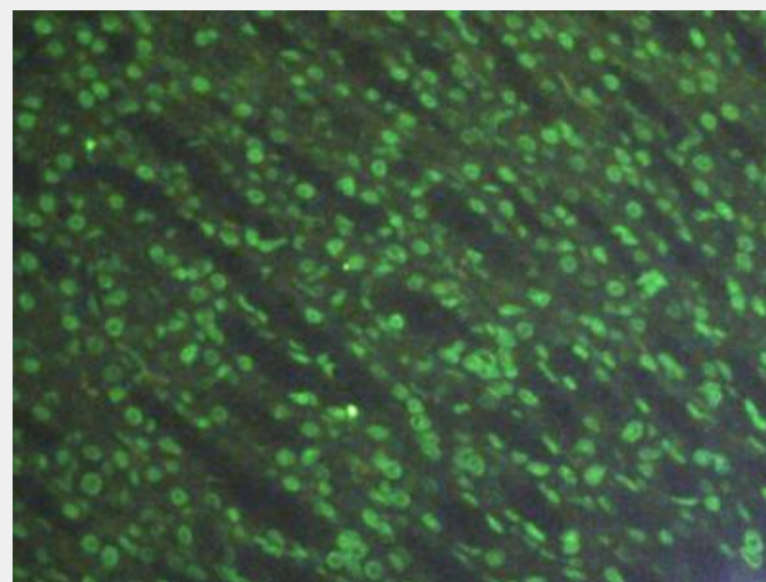


Figure:FITC staining on IHC-P Simple: Rat Stomach Tissue.)

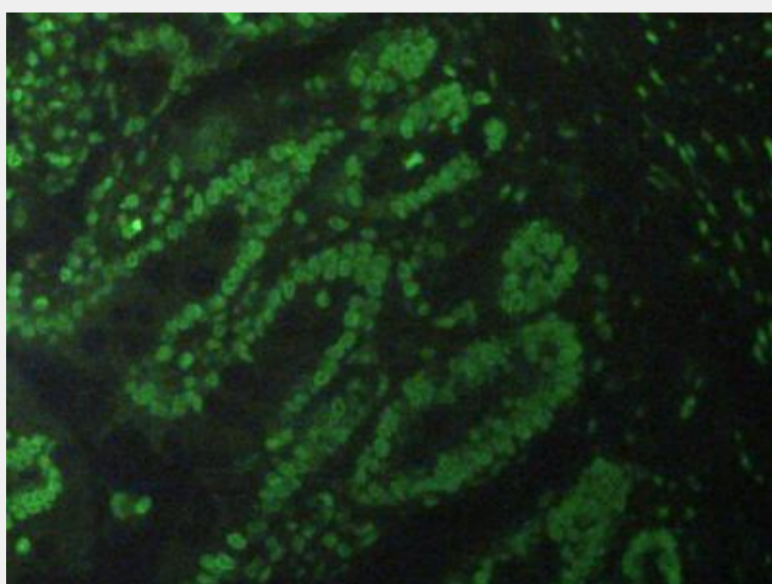


Figure:FITC staining on IHC-P Simple: Rat Small Intestine Tissue.)

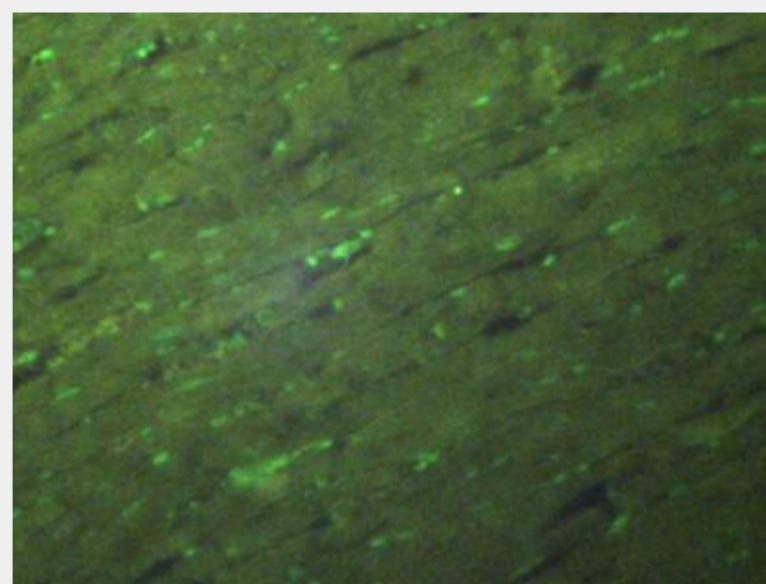


Figure:FITC staining on IHC-P Simple: Rat Heart Tissue.)

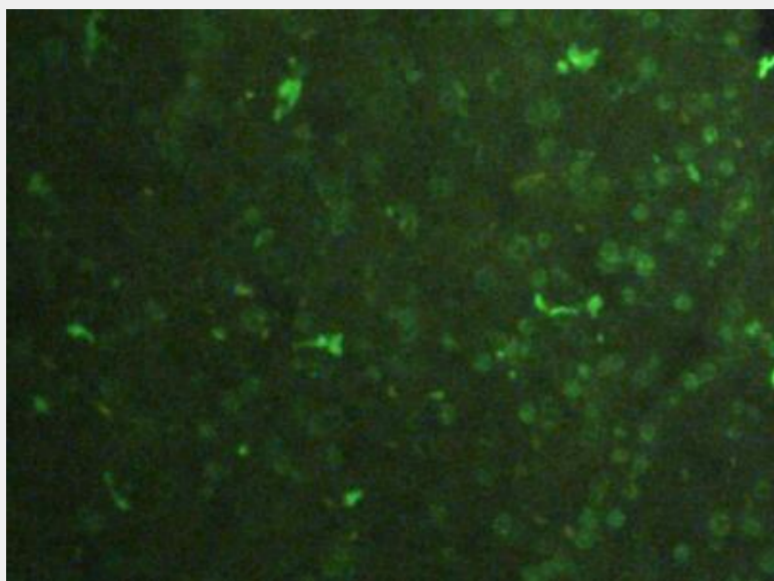


Figure:FITC staining on IHC-P  
Simple:Rat Pancreas Tissue.)

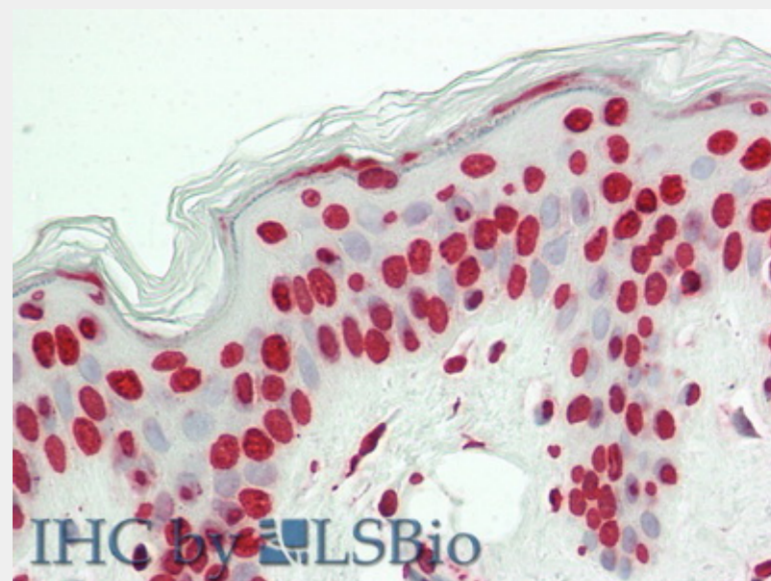


Figure. HE staining on IHC-P;<br/>Samples: Rat Skin Tissue.)

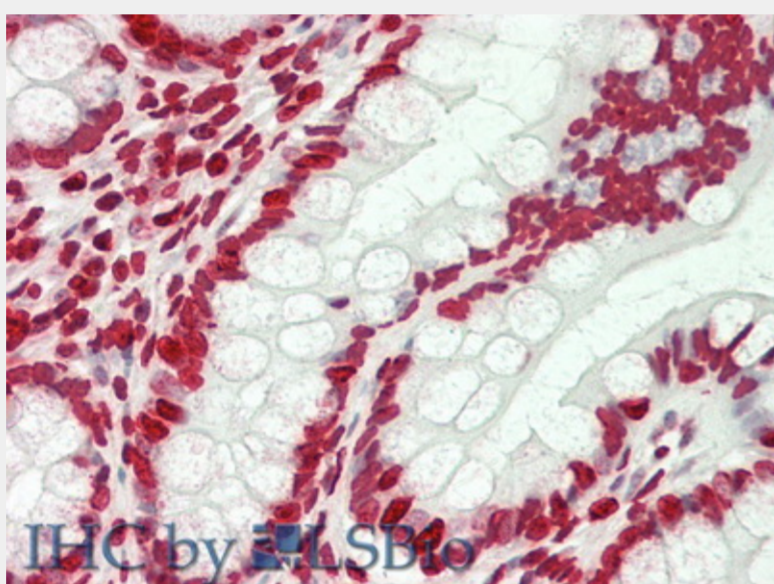


Figure. HE staining on IHC-P;<br/>Samples: Rat Intestine Tissue.)

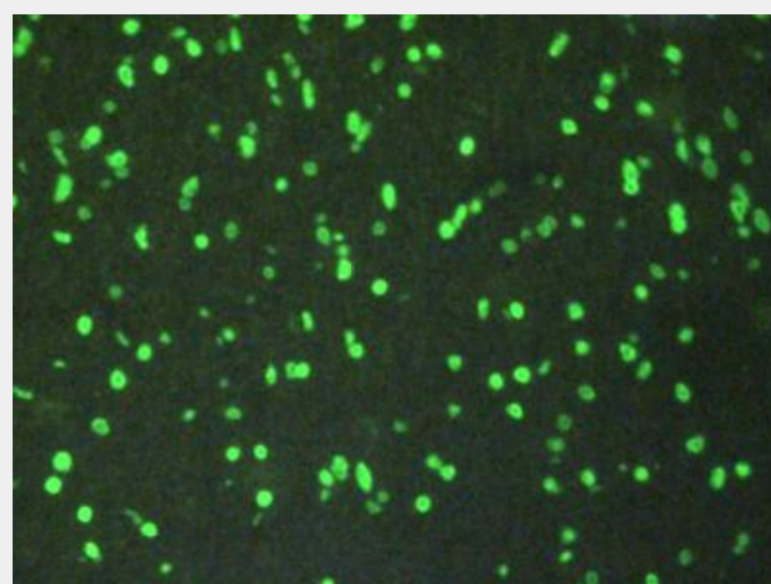


Figure:FITC staining on IHC-P; Simple: Rat Brain Tissue.)

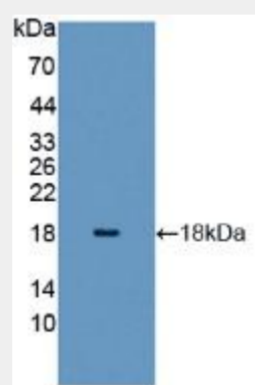


Figure. Western Blot ; Sample: Recombinant H3, Mouse.)

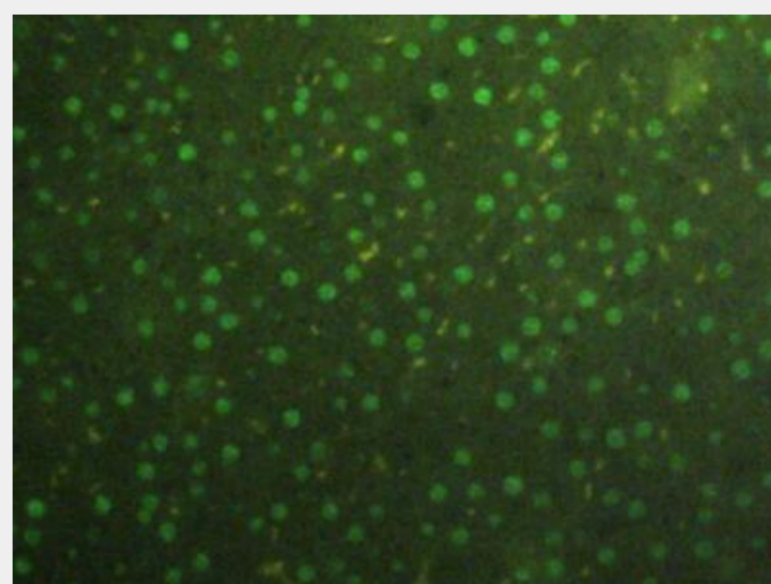


Figure:FITC staining on IHC-P  
Simple: Rat Liver Tissue.)

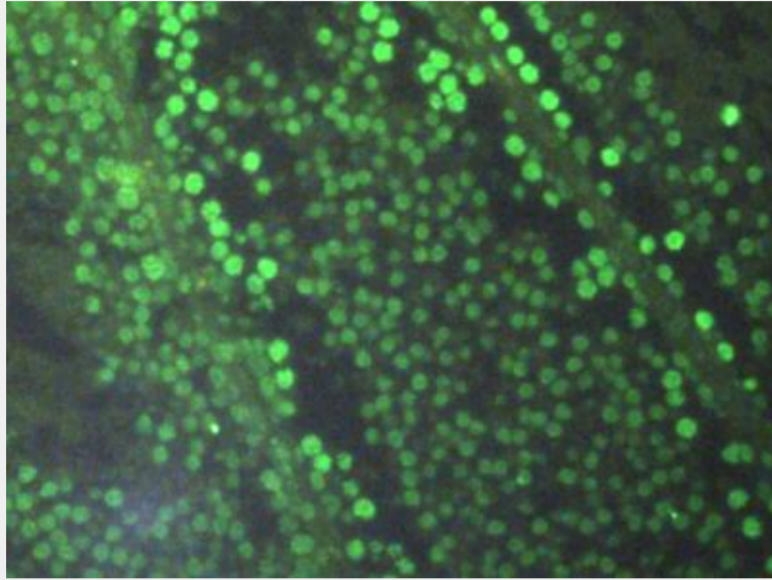


Figure:FITC staining on IHC-P  
Simple:Rat Testis Tissue.)

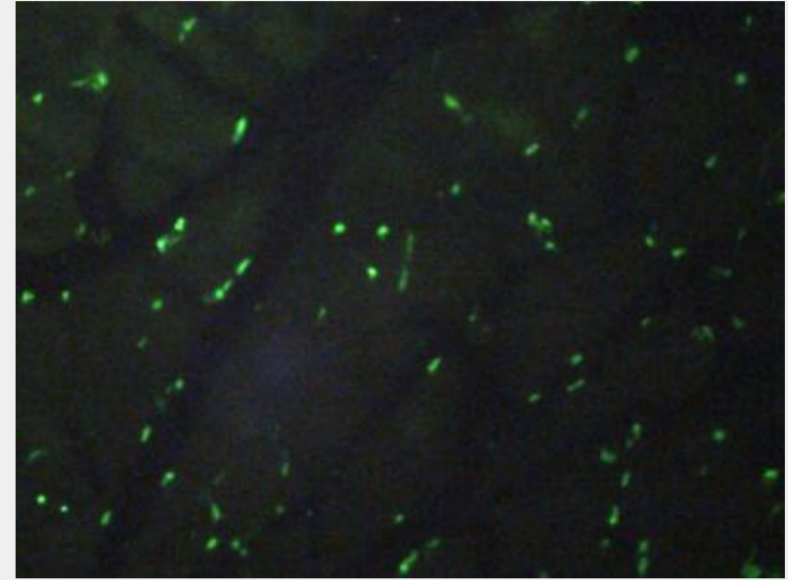


Figure:FITC staining on IHC-P  
Simple: Rat Skeletal Muscle Tissue.)

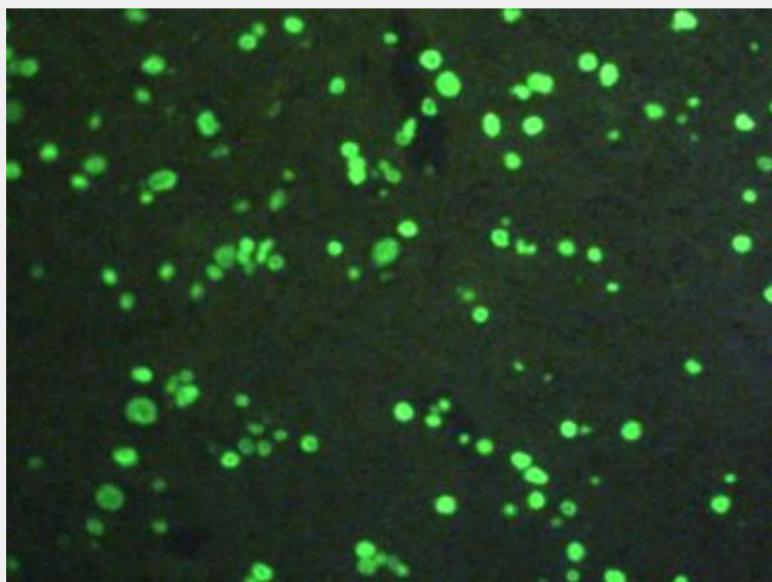


Figure:FITC staining on IHC-P  
Simple:Rat Spinal Cord Tissue.)

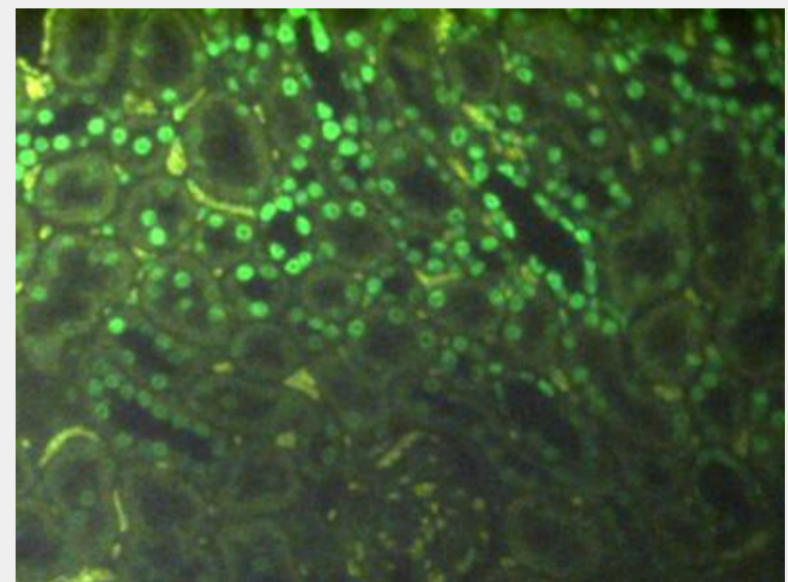


Figure:FITC staining on IHC-P  
Simple: Rat Kidney Tissue.)

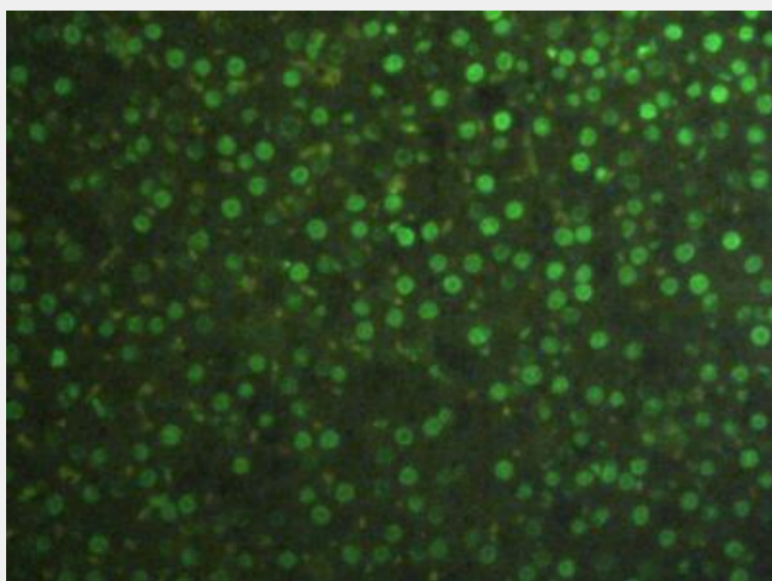


Figure:FITC staining on IHC-P  
Simple: Rat Adrenal Tissue.)

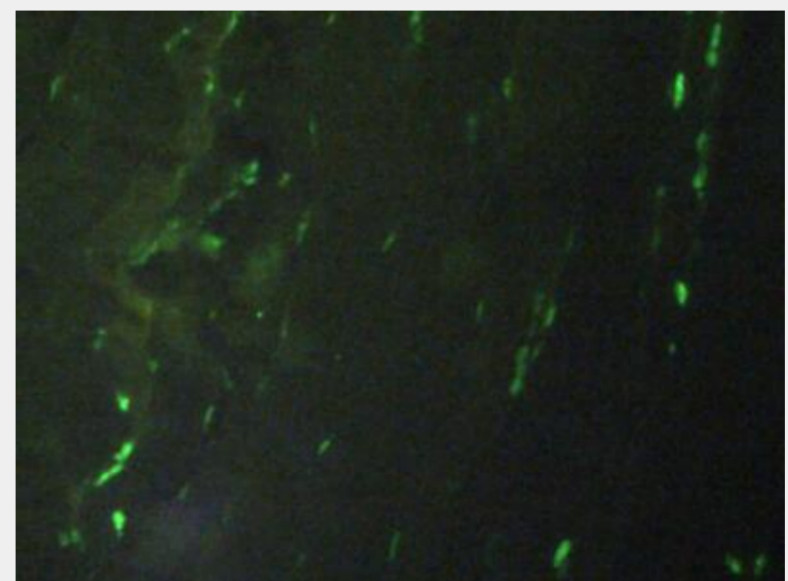


Figure:FITC staining on IHC-P  
Simple:Rat Placenta Tissue.)

All products are for RESEARCH USE ONLY. Not for diagnostic & therapeutic purposes!